

STEVE BUSSE P.O. BOX 241 508 ELM ST. ALLISON, IOWA 50602 319-267-2519

**UNITED STATES PUBLIC LAND SURVEY CORNER CERTIFICATE
 OF**

LAND SURVEY MONUMENTS SITUATED IN SECTION NO. 14, TOWNSHIP NO. 94 NORTH, RANGE
 NO. 14 WEST OF THE FIFTH PRINCIPAL MERIDIAN, CHICKASAW COUNTY, IOWA.
 PREVIOUSLY RECORDED IN N/A

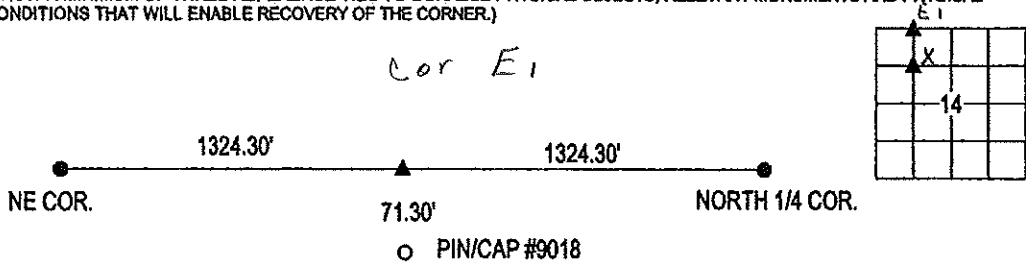
(SHOW REASON FOR PREPARING THIS CERTIFICATE, THE EVIDENCE AND DETAILED PROCEDURES USED IN ESTABLISHING THE
 CORNER POSITIONS AND MONUMENTATION FOUND OR PLACED.)

MONUMENT DESCRIPTION AND REMARKS:

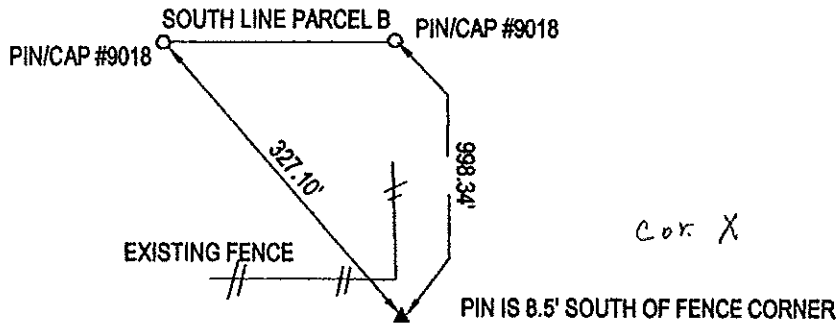
PREPARING THIS CERTIFICATE AS THERE ARE NONE RECORDED FOR EITHER CORNER. AT NORTHEAST
 CORNER OF NW 1/4 OF NW 1/4 SET MAG NAIL ON LINE AND MIDWAY BETWEEN NORTH 1/4 AND NORTHWEST
 CORNER OF SECTION. AT SOUTHEAST CORNER NW 1/4 NW 1/4 SET PIN WITH CAP AT INTERSECTION OF
 MIDPOINTS OF NORTHWEST 1/4 OF SECTION 14

PLAN VIEW

(SHOW A MINIMUM OF THREE REFERENCE TIES TO DURABLE PHYSICAL OBJECTS, RELEVANT MONUMENTS AND PHYSICAL
 CONDITIONS THAT WILL ENABLE RECOVERY OF THE CORNER.)



NORTHEAST CORNER NW 1/4 NW 1/4



**SOUTHEAST CORNER NORTHWEST
 1/4 OF NORTHWEST 1/4**



I HEREBY CERTIFY THAT THIS LAND SURVEYING DOCUMENT
 WAS PREPARED AND THE RELATED SURVEY WORK WAS
 PERFORMED BY ME OR UNDER MY DIRECT PERSONAL
 SUPERVISION AND THAT I AM A DULY LICENSED LAND
 SURVEYOR UNDER THE LAWS OF THE STATE OF IOWA.

Steve Busse 2/15/10
 STEVE BUSSE DATE

LICENSE NUMBER 9018
 MY LICENSE RENEWAL DATE IS DECEMBER 31, 2010
 PAGES OR SHEETS COVERED BY THIS SEAL 1

G.P. = 2" GAS PIPE
 CONC MONU = CONCRETE MONUMENT W/ PIN & ALUM CAP
 "X NAILS" = CROSS NAILS IN WOOD POST
 OPT = PLASTIC TAG (O=ORANGE, Y=YELLOW)
 (00) RECORDED AS

LIST CORNERS TO BE INDEXED			
CORNER	SECTION	TOWNSHIP	RANGE
SE COR. NW NW	14	94	14
NE COR. NW NW	14	94	14