

Section 11-94-74  
 As referred to in  
 Engr. Tie Book

2005-2163

Lee O. Gallentine LS, Ryken Engineering, 711 Park Ave, Ackley, IA. 50601 - Ph 641-847-3273 Fax 641-847-2303

## UNITED STATES PUBLIC LAND SURVEY CORNER CERTIFICATE

OF 12 11

Land Survey Monuments situated in Section 12 11, Township 94 North, Range 14 West, of the Fifth Principal Meridian, Chickasaw County, Iowa,  
 Previously recorded in Bk 163 Pg 468 in County Recorder's Office

(Show reason for preparing this certificate, the evidence and detailed procedures used in establishing the corner positions and monumentation found or set.)

### Monument Description and Remarks:

#### SW Corner-History of Corner

1982, 6-10-Found PK nail.... 1.0' North of centerline' per Co Rec's Bk 126 Pgs 441-446

1997 -Found PK nail' per Co Rec's Bk 163 Pg 468 and Bk 164 Pg 81

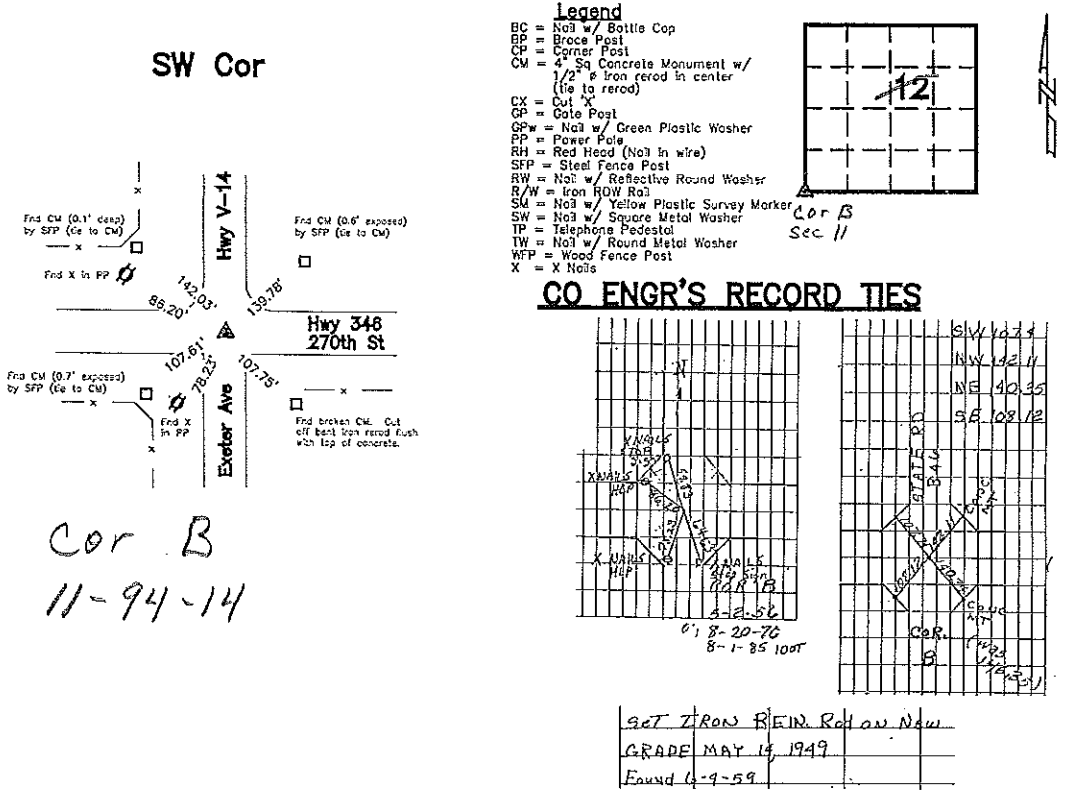
Current Co Engr's records indicate that corner is monumented with 'Stone and I.P.' and 'Ties from Iowa State Highway Comm' on '5-26-56', '8-20-76', and '8-1-85' with ties as shown below.

Corner Recovery-Searched area with metal detector and found PK nail laying sideways beside 2 1/2"Ø aluminum IDOT monument laying sideways 0.1' deep on 4"Ø PCC core hole 0.5' deep at 1.3'± N of centerline joint of ACC road E-W, in-line with centerline of gravel road S, and in-line with centerline of ACC road N. Location of monument found matches that of record, monument found matches that of record, and record ties are within reason. Therefore, removed nail and aluminum monument, set 3/4"Ø x 0.9' aluminum capped iron rerod (#15745) stamped '11', '12', '13', and '14' in center of PCC core to perpetuate monumentation and used it as the correct corner. All ties are plumb distance unless indicated otherwise.

This certificate is being prepared because there is a change to monumentation of record and this corner was used for a survey in this section for Evelyn G. Thompson.

### Plan View

(Show a minimum of three reference ties to durable physical objects, relevant monuments, and physical conditions that will enable recovery of the corner.)



I hereby certify that this land surveying document was prepared and the related survey work was performed by me or under my direct personal supervision and that I am a duly licensed land Surveyor under the laws of the State of Iowa.

LEE O. GALLETINE, LS  
 Date: Aug 5, 2005 License number: 15745  
 My license renewal date is December 31, 2008

Pages or sheets covered by this seal: 1

List Corners to be Indexed			
Corners	Section	Twp	Range
SW Cor	12	T94N	R14W

DOCUMENT No. 01991 FILED FOR RECORD THE 31st DAY OF March 19 97 AT 8:30 O'CLOCK A.M. BOOK 163 DEEDS PAGE 468 STATE OF IOWA, CHICKASAW COUNTY, Leitha M. Ross Recorder  
 RECORDING FEE \$ 6.00 LEITHA M. ROSS Deputy  
 TRANSFER FEE \$           

Prepared by: Erdman Engineering P.C. 708 Commerce Drive, P.O. Box 246, Decorah Iowa, 52101  
 Phone (319)382-4194, Fax (319)382-3623

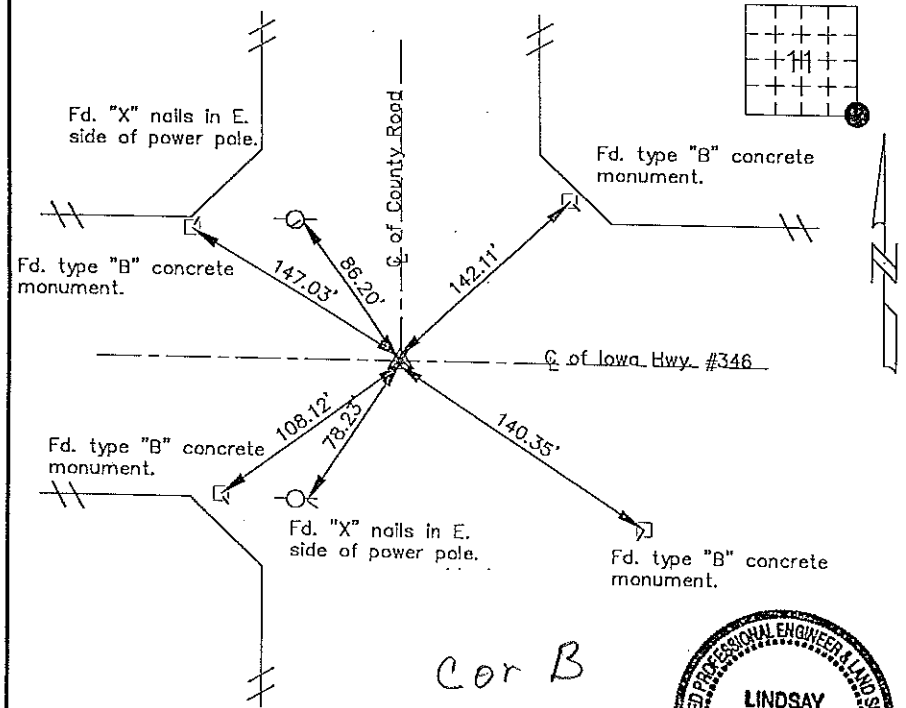
### United States Public Land Survey Corner Certificate of

Land Survey Monuments situated in Section 11 Township 94 Range 14 of the Fifth Principle Meridian, Chickasaw County, Iowa. Previously recorded in does not apply in County Recorders Office.

(Show reason for preparing this certificate, the evidence and detailed procedures used in establishing the corner positions and monumentation found or placed.)

Monument Description and Remarks: This certificate is prepared in accordance with Section 355.11 of the 1995 Code of Iowa. No previous certificate has been filed for this corner location. Based on County Engineer's Reference Ties we found two sets of "X" nails and four type "B" concrete monuments all used as tie markers. From these ties we found a P.K. nail at the SE corner of section 11-94-14.

Plan-View  
 (Show a minimum of three reference ties to durable physical objects, relevant monuments and physical conditions that will enable recovery of the corner.)



I hereby certify that the survey work was completed and this certificate was prepared by me or under by direct supervision and that I am a duly registered land surveyor under the laws of the State of Iowa.

Signature: Lindsay Erdman  
 Lindsay Erdman, P.E. and L.S.  
 Date: 3/24/97 Reg. No. 11442

My license renewal date is December 31, 1998

Corners	List Corners to be Indexed		
	Section	Twp.	Range
SE	11	94	14

163  
 BOOK PAGE 468