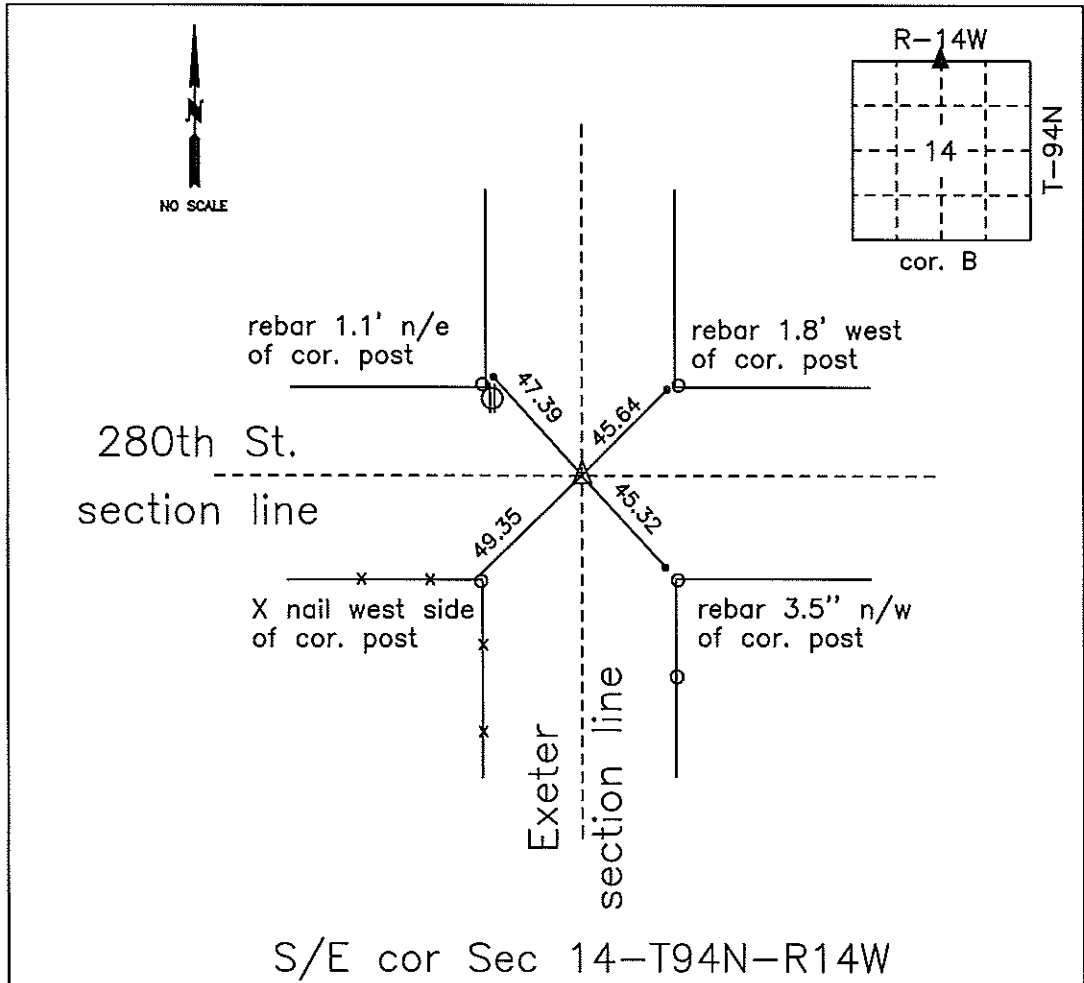


COUNTY ENGINEER'S SECTION CORNER PRESERVATION RECORD

LAND SURVEY MONUMENT LOCATED IN SECTION 14, TOWNSHIP 94 N
NORTH, RANGE 14 W, OF THE 5TH P.M. Chickasaw COUNTY, IOWA
PREVIOUSLY RECORDED _____.



MONUMENT DESCRIPTION AND NARRATIVE Found iron pin in center of road in line with
both roads north and south from county engineer ties. 3 ties were missing. Set 3 rebar w/caps

All ties are GPS surveyed.

I AM NOT A REGISTERED LAND SURVEYOR UNDER THE LAWS OF THE STATE OF IOWA

JIM FOSTER CHICKASAW CO. DATE: 7/10/13

DOCUMENT No. 01990 FILED FOR RECORD THE 31st DAY OF March 1997 AT 8:30 O'CLOCK A.M. BOOK 163 Deeds PAGE 467

RECORDING FEE \$ 6.00 By Leitha N. Edss Recorder
 TRANSFER FEE \$ _____ Deputy

Prepared by: Erdman Engineering P.C. 708 Commerce Drive, P.O. Box 246, Decorah Iowa, 52101
 Phone (319)382-4194, Fax (319)382-3623

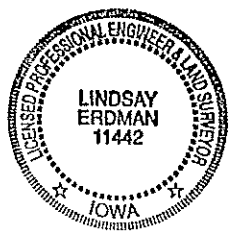
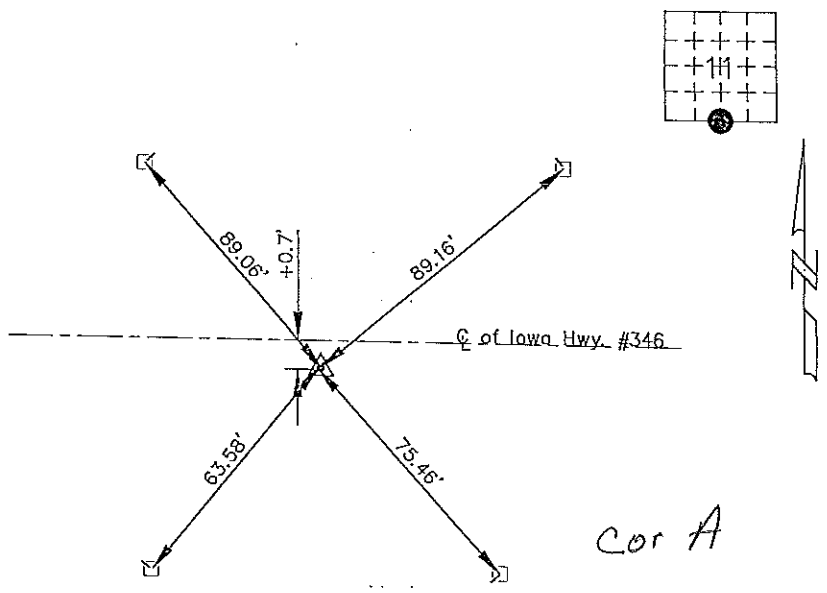
United States Public Land Survey Corner Certificate of

Land Survey Monuments situated in Section 11 Township 94 Range 14 of the Fifth Principle Meridian, Chickasaw County, Iowa. Previously recorded in does not apply in County Records Office.

(Show reason for preparing this certificate, the evidence and detailed procedures used in establishing the corner positions and monumentation found or placed.)

Monument Description and Remarks: This certificate is prepared in accordance with Section 355.11 of the 1995 Code of Iowa. No previous certificate has been filed for this corner location. Based on County Engineer's Reference Ties we found four type "B" concrete monuments used as ties markers. From these ties we found a Standard I.D.O.T. Aluminum Core Monument at the S 1/4 corner of section 11-94-12.

Plan-View
 (Show a minimum of three reference ties to durable physical objects, relevant monuments and physical conditions that will enable recovery of the corner.)



All ties are found type "B" concrete monuments.

I hereby certify that the survey work was completed and this certificate was prepared by me or under my direct supervision and that I am a duly registered land surveyor under the laws of the State of Iowa.

Signature: [Signature]
 Lindsay Erdman, P.E. and L.S.

Date: 3/24/97 Reg. No. 11442

My license renewal date is December 31, 1998

List Corners to be Indexed			
Corners	Section	Twp.	Range
S 1/4	11	94	14