

Instrument #: 2018-1911  
 11/21/2018 09:43:44 AM Total Pages: 1  
 SCC SECTION CORNER CERTIFICATES  
 Recording Fee: \$ 7.00  
 Shirley Troyna, Recorder, Chickasaw County Iowa



Prepared by & Return to: Herold - Reicks Surveying, 10 East Main Street, New Hampton, IA 50659, Ph. 641-394-2725

### United States Public Land Survey Corner Certificate

Land Survey Monument situated in  
 Section 15, Township 94 North, Range 14 West of the Fifth Principal Meridian, Chickasaw County, Iowa.  
 On file in Document #2002-0748 in the County Recorder's office.

This certificate is being prepared in compliance with Iowa Code Chapter 355.11 because:

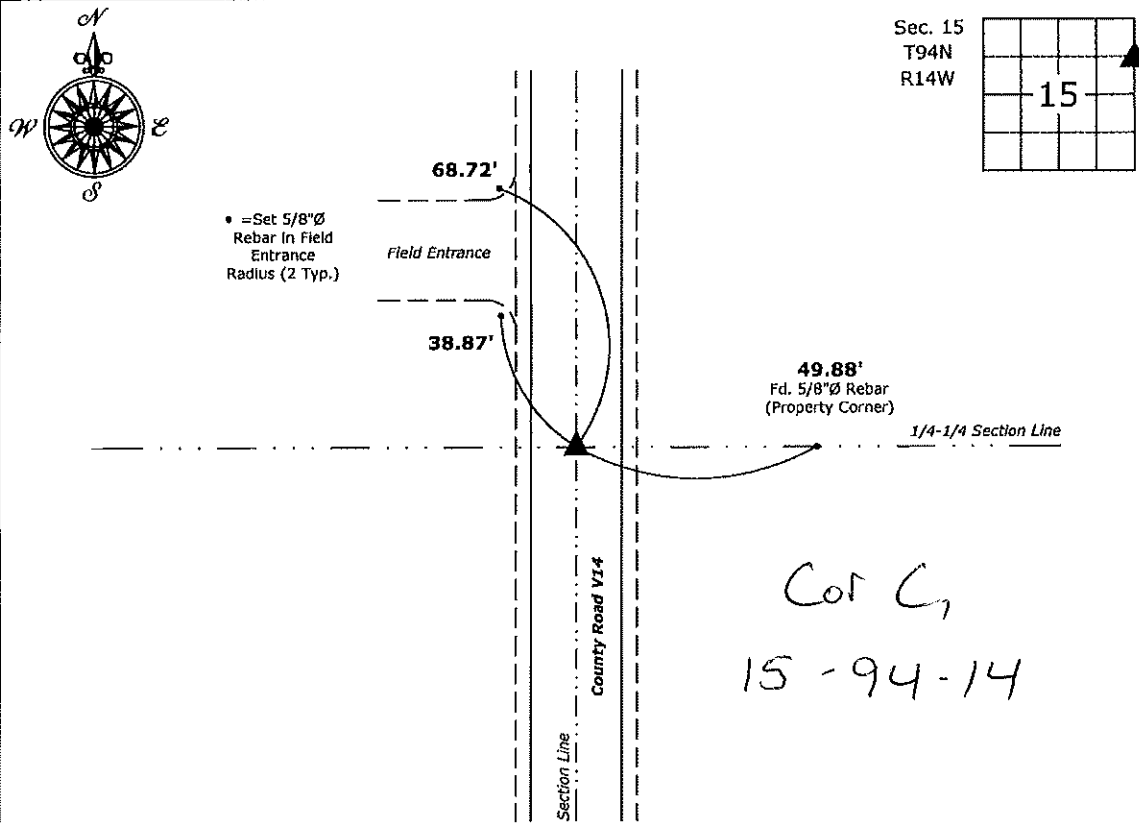
- There is no certificate on file for this corner.
- There are no longer three valid ties of record.
- There are changes to reference ties of record.
- There is change of monumentation of record.
- To clarify description of record monument (ties).

#### Monument Description and Remarks:

**Southeast Corner NE 1/4-NE 1/4:** Found Lead Plug and Cut "X" with information obtained from the previously recorded Section Corner Certificate. Reset 1"Ø Bronze Survey Marker PLS 19211 with coordinates obtained prior to highway reconstruction. Corner was reset in conjunction with Project No. FM-CO19(88)--55-19.

### Plan View

(Show a minimum of three reference ties to durable physical objects, relevant monuments and physical conditions that will enable recovery of the corner.)



Southeast Corner NE 1/4-NE 1/4 of Section 15-94-14  
 Set 1"Ø Bronze Survey Marker PLS 19211



I hereby certify that this land surveying document was prepared and the related survey work was performed by me or under my direct personal supervision and that I am a duly licensed Land Surveyor under the laws of the State of Iowa.  
*Kirk D. Reicks* 11-20-18  
 Kirk D. Reicks Date:  
 License number 19211  
 My license renewal date is December 31, 2018.  
 Sheets covered by this seal: Individual sheet only

List Corner to be Indexed			
Corner	Section	Twp.	Range
SE-NE-NE	15	94	14
Project Number: 2018-805			
FB: Chickasaw 8, Pgs. 72			

File: S:\CSD Projects\County Control Systems\CHICKASAW\CHICK-46\CHICK-46.dwg, 11/20/2018 12:48:42 PM

2002 MAR 22 AM 9 05

CINDY HESSERSMITH  
 COUNTY RECORDER

TeKIPPE ENGINEERING, P.C., 128 South Vine Street, West Union, Iowa 52176 Phone (563) 422-5131

UNITED STATES PUBLIC LAND SURVEY CORNER CERTIFICATE

OF

Land Survey Monuments situated in Section 15, Township 94 North, Range 14 West of the Fifth Principal Meridian, CHICKASAW County, Iowa. Previously recorded in none in County Recorder's Office.  
(book, page, document number, etc.)

(Show reason for preparing this certificate, the evidence and detailed procedures used in establishing the corner positions and monumentation found or placed.)

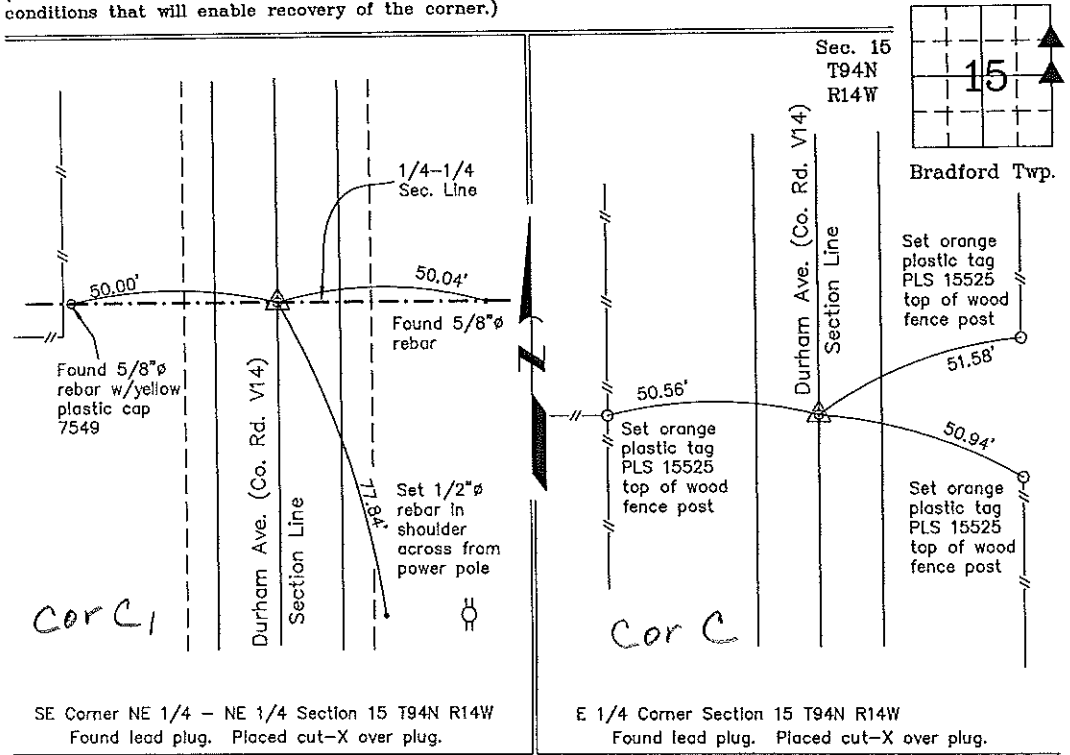
Monument Description and Remarks: SE Corner NE 1/4 - NE 1/4 Section 15 T94N R14W:  
Found lead plug in PCC surface. Placed cut-X over plug.  
E 1/4 Corner Section 15 T94N R14W: Found lead plug in PCC surface. Placed cut-X over plug.

NOTE: Both Corners were found with information obtained from a Survey and Plat made by Thomas Craft recorded in the Chickasaw County Recorder's Office in Deeds Book 135, Page 483 on March 24, 1986.

PLAN - VIEW

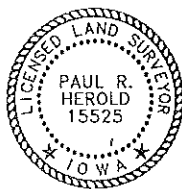
159414jo.dwg Project Number 02034.LS  
 FB. 461 PG. 69-76

(Show a minimum of three reference ties to durable physical objects, relevant monuments and physical conditions that will enable recovery of the corner.)



SE Corner NE 1/4 - NE 1/4 Section 15 T94N R14W  
 Found lead plug. Placed cut-X over plug.

E 1/4 Corner Section 15 T94N R14W  
 Found lead plug. Placed cut-X over plug.



I hereby certify that this land surveying document was prepared and the related survey work was performed by me or under my direct personal supervision and that I am a duly licensed Land Surveyor under the laws of the State of Iowa.

Paul R. Herold 3-21-02  
 Paul R. Herold Date  
 License number 15525  
 My license renewal date is December 31, 2002.  
 Sheets covered by this seal: Individual

List Corners to be Indexed			
Corners	Section	Twp.	Range
SE-NE-NE	15	94N	14W
E 1/4	15	94N	14W

Filed 4-1-02

County Engineer  
 Cooper