

Instrument #: 2018-1910
 11/21/2018 09:43:44 AM Total Pages: 1
 SCC SECTION CORNER CERTIFICATES
 Recording Fee: \$ 7.00
 Shirley Troyna, Recorder, Chickasaw County Iowa



Prepared by & Return to: Herold - Reicks Surveying, 10 East Main Street, New Hampton, IA 50659, Ph. 641-394-2725

United States Public Land Survey Corner Certificate

Land Survey Monument situated in
 Section 15, Township 94 North, Range 14 West of the Fifth Principal Meridian, Chickasaw County, Iowa.
 On file in Document #2006-0803 in the County Recorder's office.

This certificate is being prepared in compliance with Iowa Code Chapter 355.11 because:

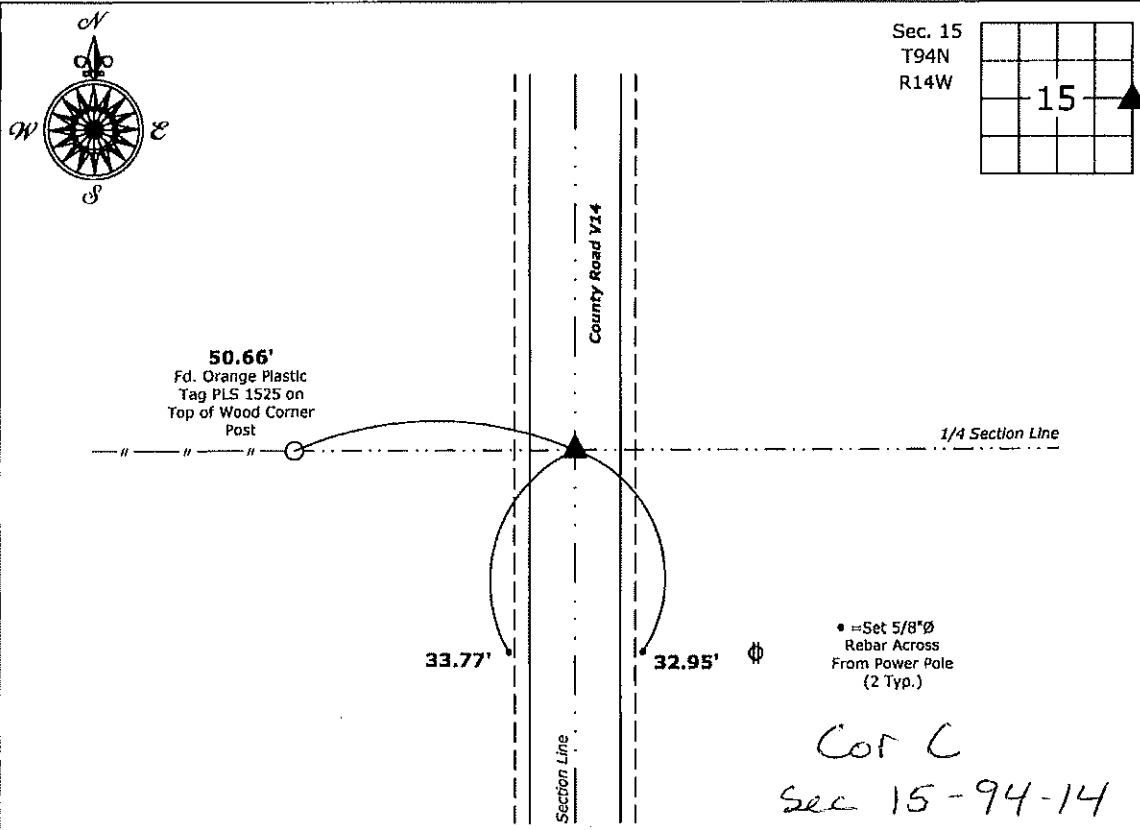
- There is no certificate on file for this corner.
- There are no longer three valid ties of record.
- There are changes to reference ties of record.
- There is change of monumentation of record.
- To clarify description of record monument (ties).

Monument Description and Remarks:

East 1/4 Corner: Found Lead Plug and Cut "X" with information obtained from the previously recorded Section Corner Certificate. Reset 1"Ø Bronze Survey Marker PLS 19211 with coordinates obtained prior to highway reconstruction. Corner was reset in conjunction with Project No. FM-CO19(88)--55-19.

Plan View

(Show a minimum of three reference ties to durable physical objects, relevant monuments and physical conditions that will enable recovery of the corner.)



East 1/4 Corner of Section 15-94-14
 Set Bronze Survey Marker PLS 19211



I hereby certify that this land surveying document was prepared and the related survey work was performed by me or under my direct personal supervision and that I am a duly licensed Land Surveyor under the laws of the State of Iowa.

Kirk D. Reicks 11-20-18
 Kirk D. Reicks Date:

License number 19211
 My license renewal date is December 31, 2018.
 Sheets covered by this seal: Individual sheet only

List Corner to be Indexed			
Corner	Section	Twp.	Range
E 1/4	15	94	14

Project Number: 2018-805
 FB: Chickasaw B, Pgs. 72

File: S:_CSD Projects\County Control Systems\CHICKASAW\CHICK-46.dwg, 11/20/2018 12:50:49 PM

Scott A. Steinfadt LS, Ryken Engineering, 711 Park Avenue, Ackley, Iowa 50601 - Ph. 641-847-3273 - Fax 641-847-2303

UNITED STATES PUBLIC LAND SURVEY CORNER CERTIFICATE

OF

Land Survey Monuments situated in Section 15, Township 94 North, Range 14 West, of the Fifth Principal Meridian, Chickasaw County, Iowa, Previously recorded in Doc # 2002 - 0748 in County Recorder's Office

(Show reason for preparing this certificate, the evidence and detailed procedures used in establishing the corner positions and monumentation found or set.)

Monument Description and Remarks:

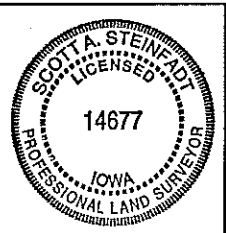
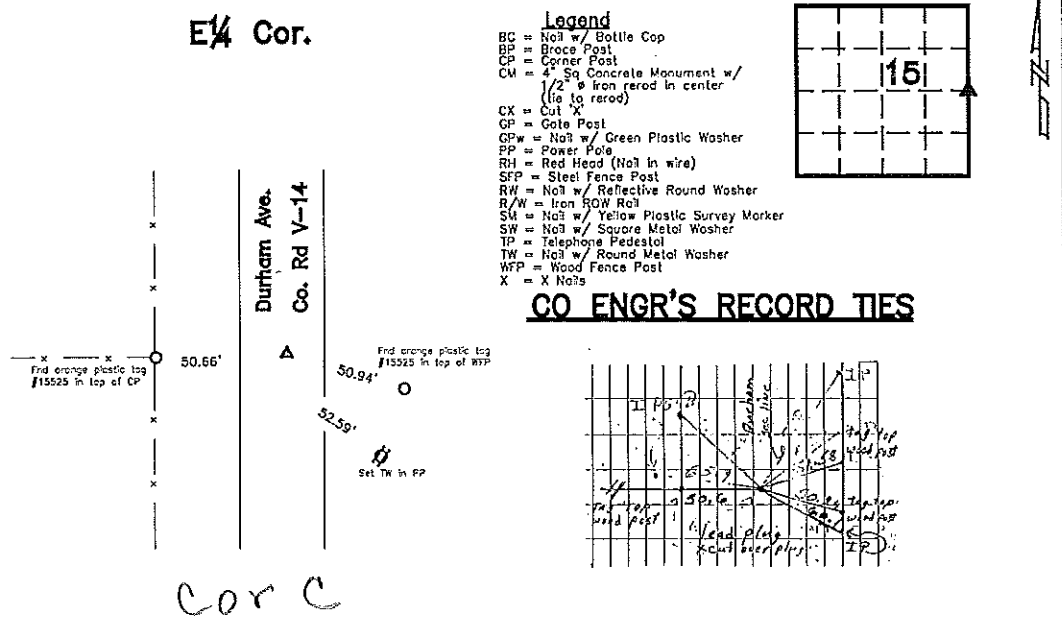
E1/4 Cor. - History of Corner = 1914, 4-26 - 'Found Stone' per Co Rec's Irr Plat Book 2, Pg 166 & Record of Certificates & Field Notes Book, Pg 293.
 1953, 5-18 - 'Set Stone' per Co Engr's Sec Cor Tie Books for Sec 15.
 1960, 7-16 - 'Dug 3'x4'x4' Hole, but couldn't find split fences & road & set I.P. in line with fence West' per Co Engr's Sec Cor Tie Books for Sec 15.
 1961, 9-21 - 'Retied' per Co Engr's Sec Cor Tie Books for Sec 15.
 1962, 6-11 - 'Retied' per Co Engr's Sec Cor Tie Books for Sec 15.
 1986, 3-23 - 'Found Lead Plug' per Survey Plat Record in Co Rec's Bk 135, Pg 483.
 2002, 3-21 - 'Fd Lead Plug Placed cut 'X' (over Plug)' per Co Rec's Doc # 2002 - 0743 & #2002 - 0748
 Previous Co Engr's records indicate that corner is monumented with 'Stone'.
 Current Co Engr's records indicate that corner is monumented with "Lead Plug cut 'X' over plug" with ties as shown below.

Corner Recovery = Searched are and found cut "X" over lead plug using two remaining ties from corner certificate at 0.2' E of centerline of PCC road N-S, 2.5'± N of fenceline W, 50.6'± E of fenceline N-S, and 50.5'± W of fenceline remnants N-S. Location of monument found matches that of record, monument found matches that of record, and record ties are within reason. Therefore, used cut "X" over the lead plug as the correct corner. All ties are plumb distance unless indicated otherwise.

This certificate is being prepared because there are no longer three valid ties of record and this corner was used for a survey in this section for Doris J. Woodruff.

Plan View

(Show a minimum of three reference ties to durable physical objects, relevant monuments, and physical conditions that will enable recovery of the corner.)



I hereby certify that this land surveying document was prepared and the related survey work was performed by me or under my direct personal supervision and that I am a duly licensed Land Surveyor under the laws of the State of Iowa.

Scott A. Steinfadt

SCOTT A. STEINFADT, LS
 Date: 4-11-06 License number: 14677
 My license renewal date is December 31, 2008

Pages or sheets covered by this seal: 1

List Corners to be Indexed			
Corners	Section	Twp	Range
E1/4 Cor.	15	T94N	R14W

2002 MAR 22 AM 9 05

CINDY HESSERSMITH
 COUNTY RECORDER

TeKIPPE ENGINEERING, P.C., 128 South Vine Street, West Union, Iowa 52176 Phone (563) 422-5131

UNITED STATES PUBLIC LAND SURVEY CORNER CERTIFICATE

OF

Land Survey Monuments situated in Section 15, Township 94 North, Range 14 West of the Fifth Principal Meridian, CHICKASAW County, Iowa. Previously recorded in none in County Recorder's Office. (book, page, document number, etc.)

(Show reason for preparing this certificate, the evidence and detailed procedures used in establishing the corner positions and monumentation found or placed.)

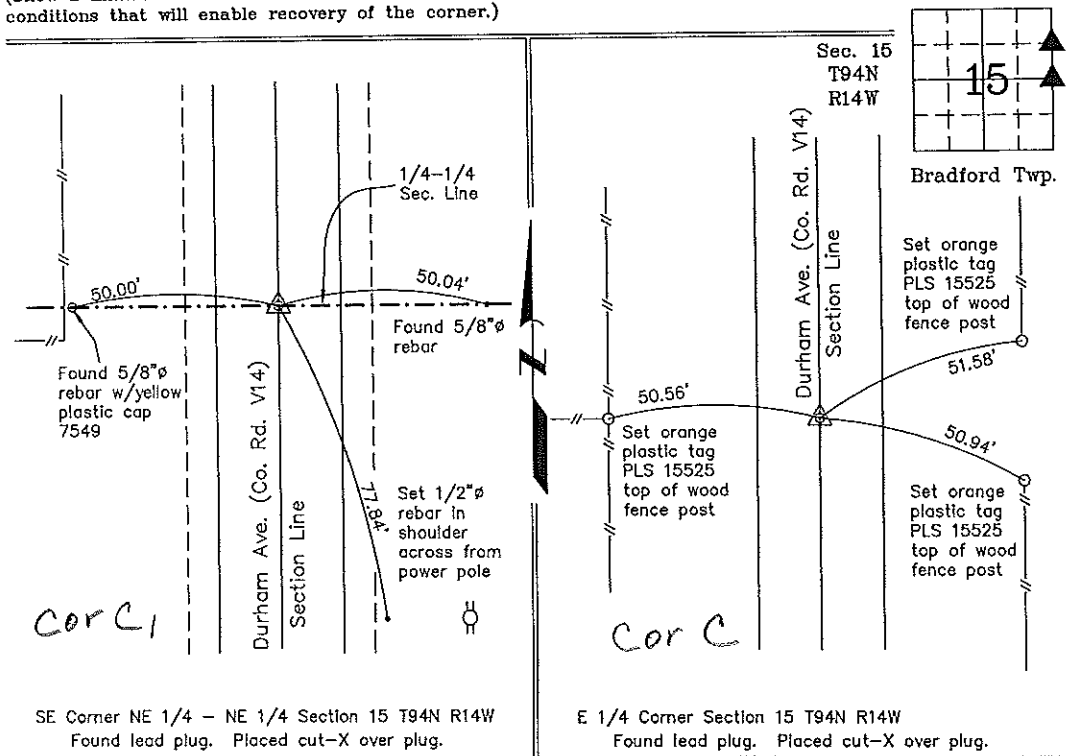
Monument Description and Remarks: SE Corner NE 1/4 - NE 1/4 Section 15 T94N R14W: Found lead plug in PCC surface. Placed cut-X over plug.
E 1/4 Corner Section 15 T94N R14W: Found lead plug in PCC surface. Placed cut-X over plug.

NOTE: Both Corners were found with information obtained from a Survey and Plat made by Thomas Craft recorded in the Chickasaw County Recorder's Office in Deeds Book 135, Page 483 on March 24, 1986.

PLAN - VIEW

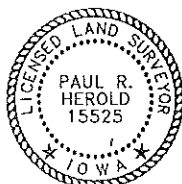
159414jo.dwg Project Number 02034.LS
 FB. 461 PG. 69-76

(Show a minimum of three reference ties to durable physical objects, relevant monuments and physical conditions that will enable recovery of the corner.)



SE Corner NE 1/4 - NE 1/4 Section 15 T94N R14W
 Found lead plug. Placed cut-X over plug.

E 1/4 Corner Section 15 T94N R14W
 Found lead plug. Placed cut-X over plug.



I hereby certify that this land surveying document was prepared and the related survey work was performed by me or under my direct personal supervision and that I am a duly licensed Land Surveyor under the laws of the State of Iowa.

Paul R. Herold 3-21-02
 Paul R. Herold Date
 License number 15525
 My license renewal date is December 31, 2002.
 Sheets covered by this seal: Individual

List Corners to be Indexed			
Corners	Section	Twp.	Range
SE-NE-NE	15	94N	14W
E 1/4	15	94N	14W

Filed 4-1-02

County Engineer
 Cooper