

FILED 2002-0747

RECORDER'S OFFICE  
CHICKASAW COUNTY, IOWA

2002 MAR 22 AM 9 04

CINDY MESSERSMITH  
COUNTY RECORDER

TEKIPPE ENGINEERING, P.C., 128 South Vine Street, West Union, Iowa 52175 Phone (563) 422-6131

UNITED STATES PUBLIC LAND SURVEY CORNER CERTIFICATE

OF

Land Survey Monuments situated in Section 15, Township 94 North, Range 14 West of the Fifth Principal Meridian, CHICKASAW County, Iowa.

Previously recorded in none in County Recorder's Office.  
(book, page, document number, etc.)

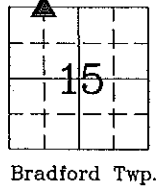
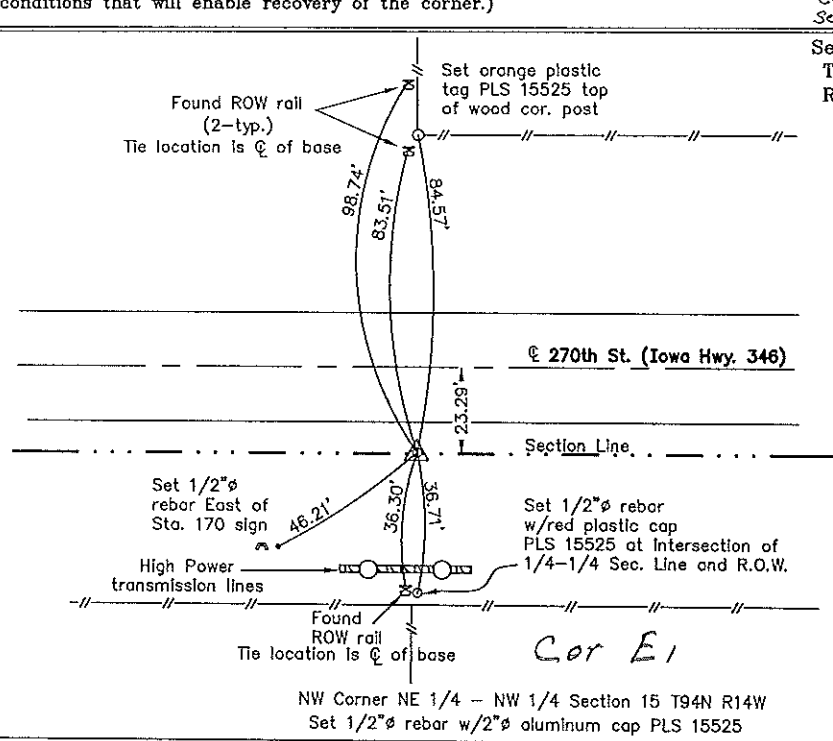
(Show reason for preparing this certificate, the evidence and detailed procedures used in establishing the corner positions and monumentation found or placed.)

Monument Description and Remarks: **NW Corner NE 1/4 - NW 1/4 Section 15 T94N R14W:**  
Set 1/2"Ø rebar w/2"Ø aluminum cap PLS 15525 equidistant and on line between the NW Corner and the N 1/4 Corner.

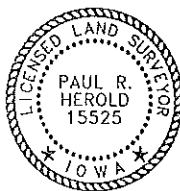
PLAN - VIEW

159414b.dwg Project Number 02034.IS  
FB. 481 PG. 69-76

(Show a minimum of three reference ties to durable physical objects, relevant monuments, and physical conditions that will enable recovery of the corner.)



NW Corner NE 1/4 - NW 1/4 Section 15 T94N R14W  
Set 1/2"Ø rebar w/2"Ø aluminum cap PLS 15525



I hereby certify that this land surveying document was prepared and the related survey work was performed by me or under my direct personal supervision and that I am a duly licensed Land Surveyor under the laws of the State of Iowa.

*Paul R. Herold* 3-21-02  
Paul R. Herold Date  
License number 15525  
My license renewal date is December 31, 2002.  
Sheets covered by this seal: Individual

List Corners to be Indexed			
Corners	Section	Twp.	Range
NW-NE-NW	15	94N	14W

Filed 4-1-02

County Engineers  
Powers