

Prepared by & Return to: Harold - Recks Surveying, 10 East Main Street, New Hampton, IA 50658, Ph. 641-394-2725

UNITED STATES PUBLIC LAND SURVEY CORNER CERTIFICATE

Land Survey Monuments situated in Section 16, Township 94 North, Range 14 West of the Fifth Principal Meridian, Chickasaw County, Iowa. 1.) Not previously recorded in the County Recorder's office. 2.) Previously recorded in Doc. #2002-0750 in the County Recorder's office.

This certificate is being prepared in compliance with Iowa Code Chapter 355.11 because:

- There is no certificate on file for this corner.
- There are no longer three valid ties of record.
- There are changes to reference ties of record.
- There is change of monumentation of record.
- To clarify description of record monument (ties).

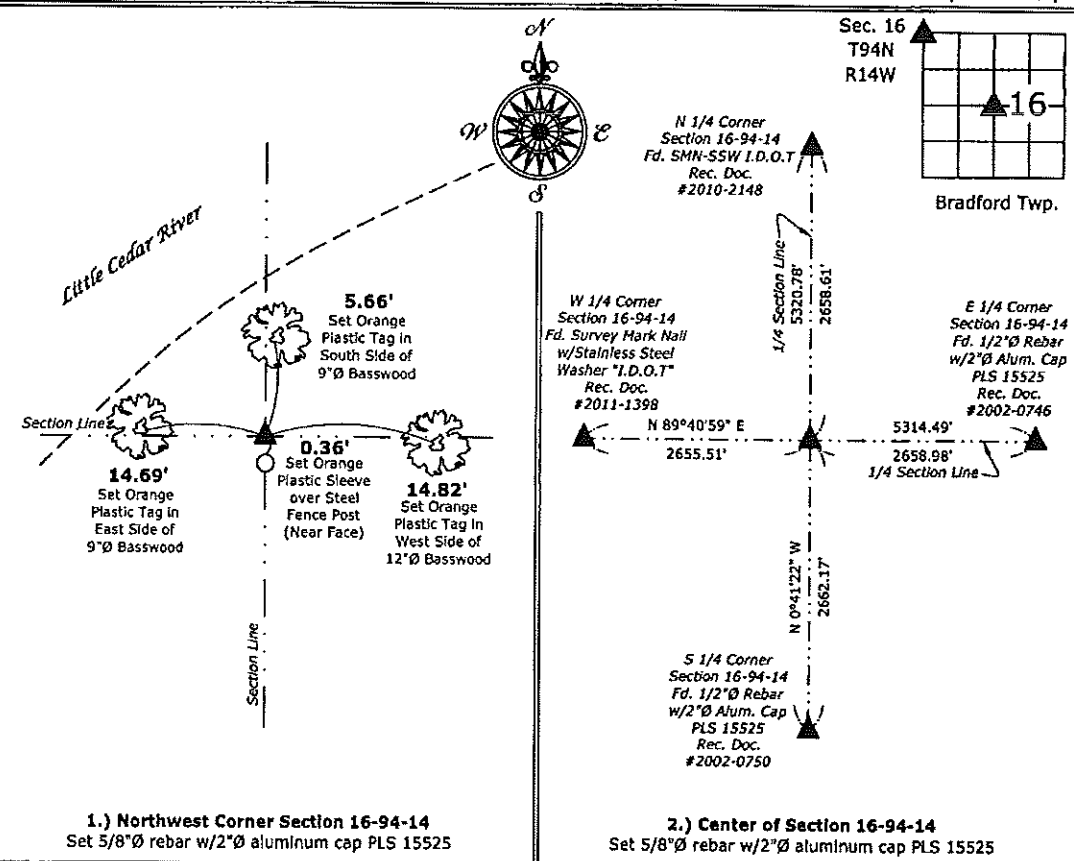
Monument Description and Remarks:

1.) Northwest Corner: Set 5/8"Ø rebar w/2"Ø aluminum cap PLS 15525 at the intersection of the monumented North and West Lines of the Northwest Quarter of said Section, as shown on a Survey and Plat recorded in Book 100, Page 125 in the County Recorder's office, New Hampton, Iowa.

2.) Center: Set 5/8"Ø rebar w/2"Ø aluminum cap PLS 15525 at the intersection of 1/4-1/4 Section Lines. Previous monument and all reference ties were destroyed during the removal of the East-West fence shown on the previous Section Corner Certificate.

PLAN - VIEW

(Show a minimum of three reference ties to durable physical objects, relevant monuments and physical conditions that will enable recovery of the corner.)



I hereby certify that this land surveying document was prepared and the related survey work was performed by me or under my direct personal supervision and that I am a duly licensed Land Surveyor under the laws of the State of Iowa.

Paul R. Herold 12-14-15
 Paul R. Herold Date:
 License number 15525
 My license renewal date is December 31, 2016.
 Sheets covered by this seal: Individual sheet only

List Corners to be Indexed			
Corners	Section	Twp.	Range
NW	16	94	14
CTR	16	94	14

Project Number: 2015-129
 FB: Chickasaw County 7, Pgs. 44-45

File: S:_C3D Projects\County Control Systems\CHICKASAW\CHICK-38\CHICK-38.dwg, 12/14/2015 8:39:11 AM

2002 MAR 22 AM 9 07

CINDY MESSERSMITH
 COUNTY RECORDER

TeKIPPE ENGINEERING, P.C., 128 South Vine Street, West Union, Iowa 52175 Phone (563) 422-5131

UNITED STATES PUBLIC LAND SURVEY CORNER CERTIFICATE

OF

Land Survey Monuments situated in Section 16, Township 94 North, Range 14 West of the Fifth Principal Meridian, CHICKASAW County, Iowa. Previously recorded in none in County Recorder's Office. (book, page, document number, etc.)

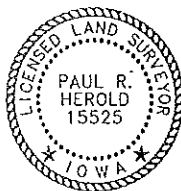
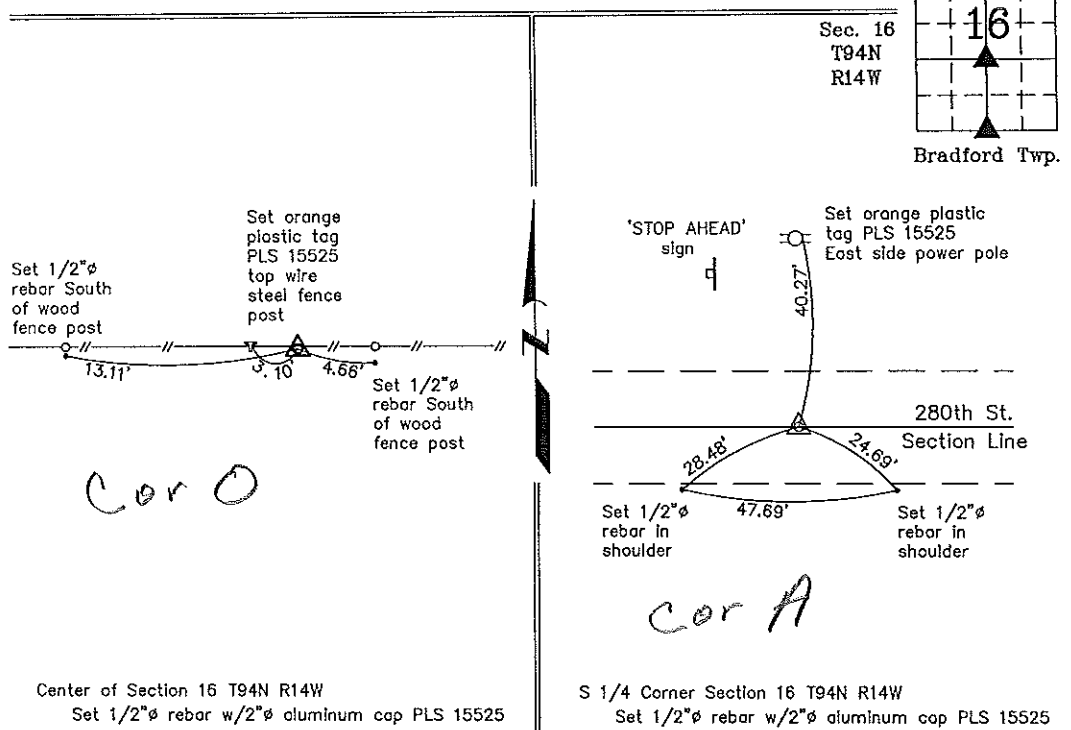
(Show reason for preparing this certificate, the evidence and detailed procedures used in establishing the corner positions and monumentation found or placed.)

Monument Description and Remarks: Center of Section 16 T94N R14W: Set 1/2"Ø rebar w/2"Ø aluminum cap PLS 15525 at the intersection of the 1/4 Section Lines.
S 1/4 Corner Section 16 T94N R14W: Set 1/2"Ø rebar w/2"Ø aluminum cap PLS 15525 by extending a line from the SW Corner through a point 33' West of the P.I. in Cheyenne Avenue (Record location of the 1/4 - 1/4 - 1/4 section corner position) by the amount of one third the distance between the SW Corner and the point 33' West of said P.I., and extended the distance to the East to establish the corner position.

PLAN - VIEW

169414MW.DWG Project Number 02034.LS
 FB. 461 PG. 69-76

(Show a minimum of three reference ties to durable physical objects, relevant monuments and physical conditions that will enable recovery of the corner.)



I hereby certify that this land surveying document was prepared and the related survey work was performed by me or under my direct personal supervision and that I am a duly licensed Land Surveyor under the laws of the State of Iowa.

Paul R. Herold 3-21-02
 Paul R. Herold Date
 License number 15525
 My license renewal date is December 31, 2002.
 Sheets covered by this seal: Individual

List Corners to be Indexed			
Corners	Section	Twp.	Range
Center	16	94N	14W
S 1/4	16	94N	14W

Filed 3-26-02

County Engineer's Copy