

Herold - Recks Surveying, 10 East Main Street, New Hampton, IA 50659, Ph. 641-394-2725, Fax. 641-394-2718

UNITED STATES PUBLIC LAND SURVEY CORNER CERTIFICATE

Land Survey Monuments situated in Section 9, Township 94 North, Range 14 West of the Fifth Principal Meridian, Chickasaw County, Iowa. 1.) Not previously recorded in the County Recorder's office. 2.) Previously recorded Doc. #2002-0749 in the County Recorder's office.

This certificate is being prepared in compliance with Iowa Code Chapter 355.11 because:

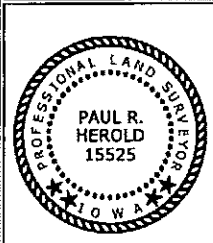
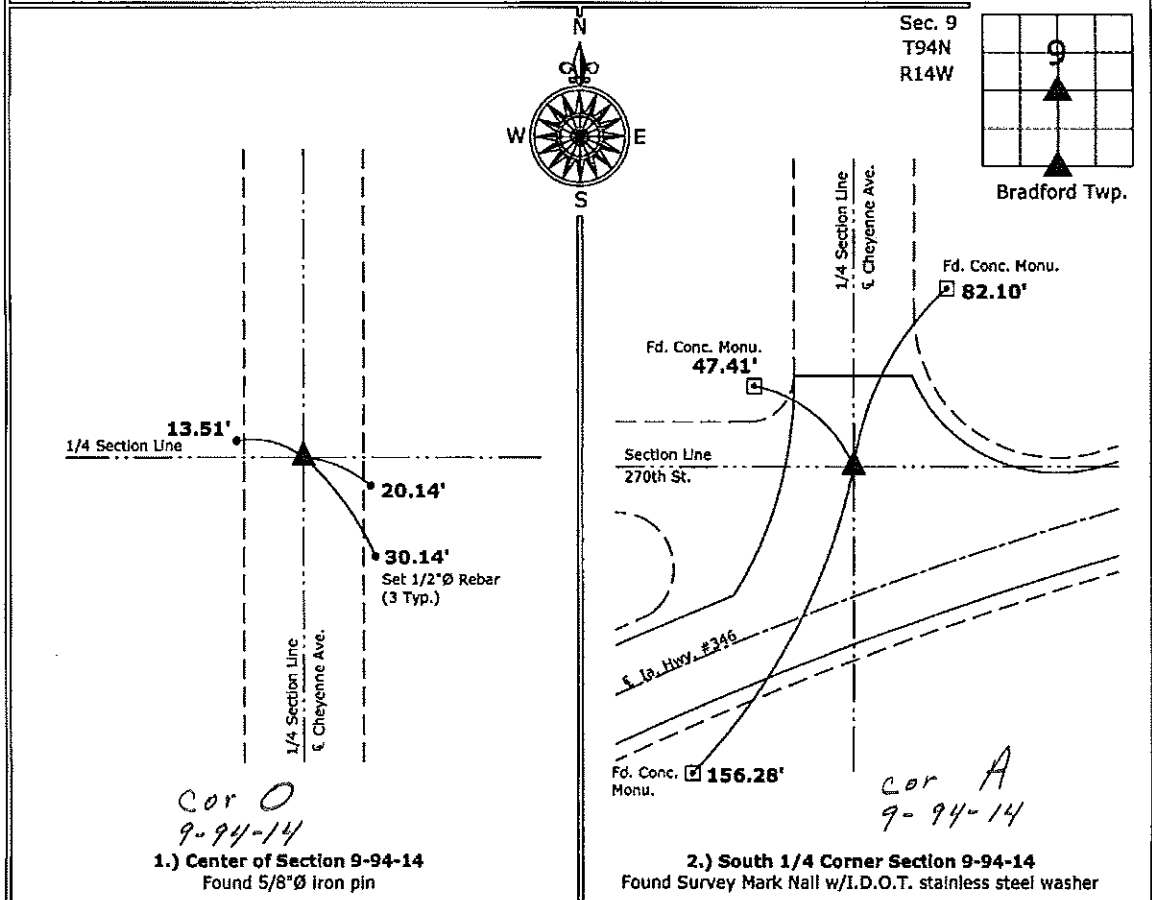
- 1.) There is no certificate on file for this corner.
- There are no longer three valid ties of record.
- There are changes to reference ties of record.
- 2.) There is change of monumentation of record.
- To clarify description of record monument (ties).

Monument Description and Remarks:

- 1.) **Center of Section:** Found 5/8"Ø Rebar with information obtained at the County Engineer's office.
- 2.) **South 1/4 Corner:** Found Survey Mark Nail with I.D.O.T. stainless steel washer matching the reference ties on the previous Section Corner Certificate, the previous monument was covered by an HMA Overlay project and the Corner was remonumented by the Iowa D.O.T.

PLAN - VIEW

(Show a minimum of three reference ties to durable physical objects, relevant monuments and physical conditions that will enable recovery of the corner.)



I hereby certify that this land surveying document was prepared and the related survey work was performed by me or under my direct personal supervision and that I am a duly licensed Land Surveyor under the laws of the State of Iowa.

Paul R. Herold 12-27-10
 Date: Paul R. Herold
 License number 15525
 My license renewal date is December 31, 2010.
 Sheets covered by this seal: Individual sheet only

List Corners to be Indexed			
Corners	Section	Twp.	Range
CTR	9	94	14
S 1/4	9	94	14

Project Number: 2010-153
 FB: Chickasaw County 3, Pg. 60

Section 9-94-14
As referred to in
Engr. Tie Book

FILED 2002-0749
RECORDER'S OFFICE
CHICKASAW COUNTY, IOWA
2002 MAR 22 AM 9 06
CINDY MESSERSMITH
COUNTY RECORDER

TeKIPPE ENGINEERING, P.C., 128 South Vine Street, West Union, Iowa 52175 Phone (563) 422-6131

UNITED STATES PUBLIC LAND SURVEY CORNER CERTIFICATE

OF 9
Land Survey Monuments situated in Section 16, Township 94 North, Range 14 West of the Fifth Principal Meridian, CHICKASAW County, Iowa.
Previously recorded in none in County Recorder's Office.
(book, page, document number, etc.)

(Show reason for preparing this certificate, the evidence and detailed procedures used in establishing the corner positions and monumentation found or placed.)

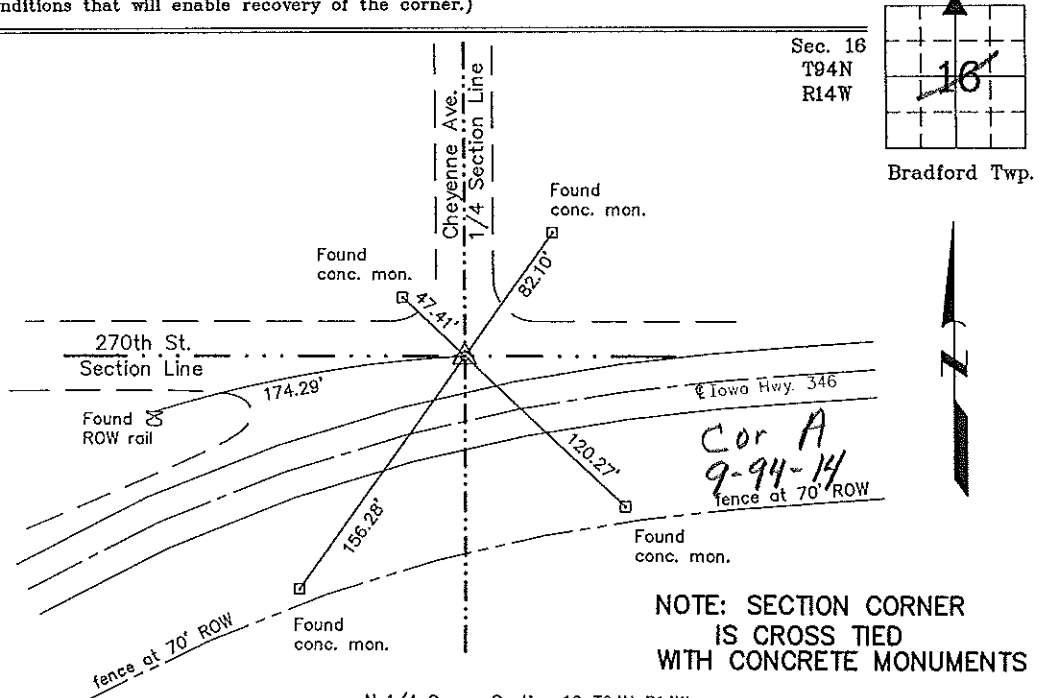
Monument Description and Remarks: **N 1/4 Corner Section 16 T94N R14W: Set 1/2"Ø rebar w/2"Ø aluminum cap PLS 15525 from Iowa Department of Transportation reference ties from As-Built plans Project Number 984(2).**

NOTE: CONCRETE REFERENCE MONUMENTS ARE CROSS TIES.

PLAN - VIEW

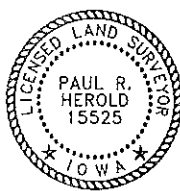
Project Number 02034.LS
FB. 481 PG. 69-76

(Show a minimum of three reference ties to durable physical objects, relevant monuments and physical conditions that will enable recovery of the corner.)



NOTE: SECTION CORNER IS CROSS TIED WITH CONCRETE MONUMENTS

N 1/4 Corner Section 16 T94N R14W
Set 1/2"Ø rebar w/2"Ø aluminum cap PLS 15525



I hereby certify that this land surveying document was prepared and the related survey work was performed by me or under my direct personal supervision and that I am a duly licensed Land Surveyor under the laws of the State of Iowa.
Paul R. Herold 3-21-02
Paul R. Herold Date
License number 15525
My license renewal date is December 31, 2002.
Sheets covered by this seal: Individual

List Corners to be Indexed			
Corners	Section	Twp.	Range
N 1/4	16	94N	14W

Filed 3-22-02

County Engineer's Office