

Section 9-94-14  
As referred to in  
Engr. T.C. Book

FILED 2002-0746  
RECORDER'S OFFICE  
CHICKASAW COUNTY, IOWA  
2002 MAR 22 AM 9 03  
CINDY MESSERSMITH  
COUNTY RECORDER

TEKIPPE ENGINEERING, P.C., 128 South Vine Street, West Union, Iowa 52176 Phone (563) 422-6131

UNITED STATES PUBLIC LAND SURVEY CORNER CERTIFICATE

OF  
Land Survey Monuments situated in Section 15<sup>9</sup>, Township 94 North, Range 14 West of the Fifth Principal Meridian, CHICKASAW County, Iowa.  
Previously recorded in none in County Recorder's Office.  
(book, page, document number, etc.)

(Show reason for preparing this certificate, the evidence and detailed procedures used in establishing the corner positions and monumentation found or placed.)

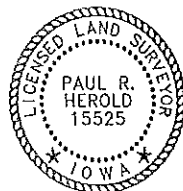
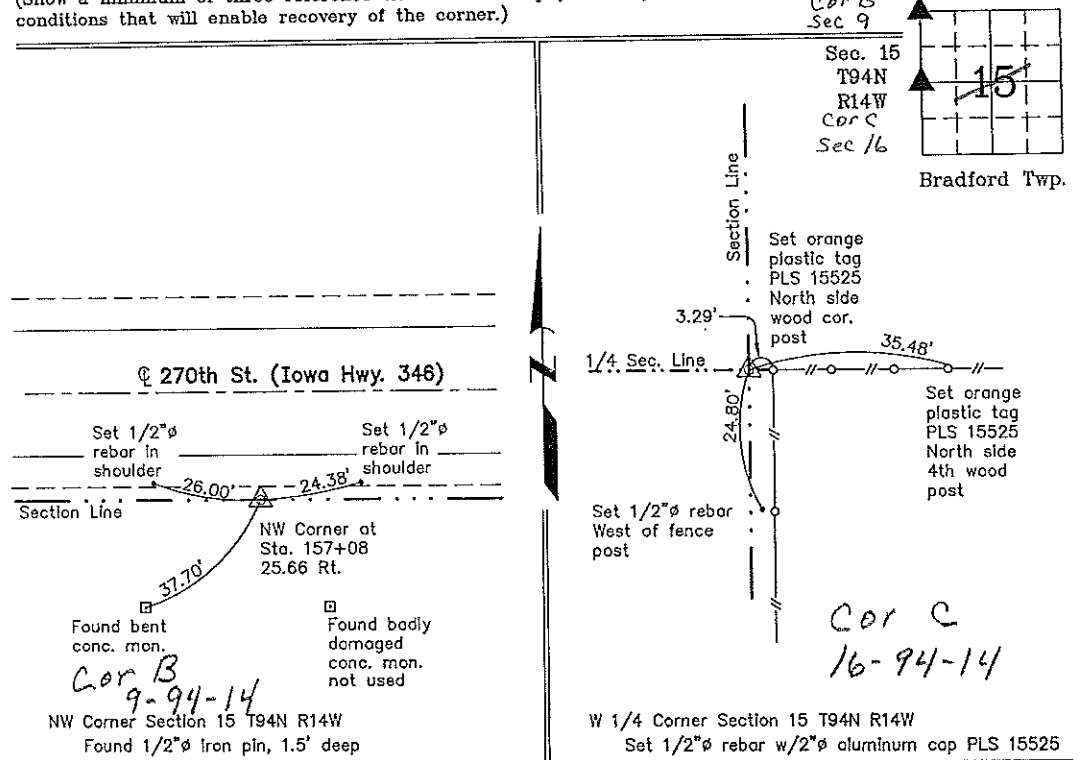
Monument Description and Remarks: NW Corner Section 15 T94N R14W: Found 1/2"Ø iron pin, 1.5' deep, with information obtained from the as-built plans for Iowa Department of Transportation Project Number 984(2).

W 1/4 Corner Section 15 T94N R14W: Set 1/2"Ø rebar w/2"Ø aluminum cap PLS 15525 equidistant between the NW Corner and the SW Corner at the record distance from the E 1/4 Corner as stated in the Plat and Survey made by Deo V. Butler recorded in the Chickasaw County Recorder's Office in Field Notes A, Page 593 on February 23, 1916.

PLAN - VIEW

159414ak.dwg Project Number 02034.LS  
FB. 461 PG. 69-76

(Show a minimum of three reference ties to durable physical objects, relevant monuments and physical conditions that will enable recovery of the corner.)



I hereby certify that this land surveying document was prepared and the related survey work was performed by me or under my direct personal supervision and that I am a duly licensed Land Surveyor under the laws of the State of Iowa.  
*Paul R. Herold* 3-21-02  
Paul R. Herold Date  
License number 15525  
My license renewal date is December 31, 2002.  
Sheets covered by this seal: Individual

List Corners to be Indexed			
Corners	Section	Twp.	Range
NW	15	94N	14W
W 1/4	15	94N	14W

Filed 4-1-02

County Engineer's