

Herold - Recks Surveying, 25 1/2 East Main Street, Suite 204, New Hampton, IA 50658, Ph. 641-354-2725

**UNITED STATES PUBLIC LAND SURVEY CORNER CERTIFICATE**

Land Survey Monuments situated in Section 17, Township 94 North, Range 14 West of the Fifth Principal Meridian, Chickasaw County, Iowa. Previously recorded in Bk. 170, Pg. 344 in the Chickasaw County Recorder's office.

This certificate is being prepared in compliance with Iowa Code Chapter 355.11 because:

- There is no certificate on file for this corner.
- There are no longer three valid ties of record.
- 2.)  There are changes to reference ties of record.
- 1.)  There is change of monumentation of record.
- To clarify description of record monument (ties).

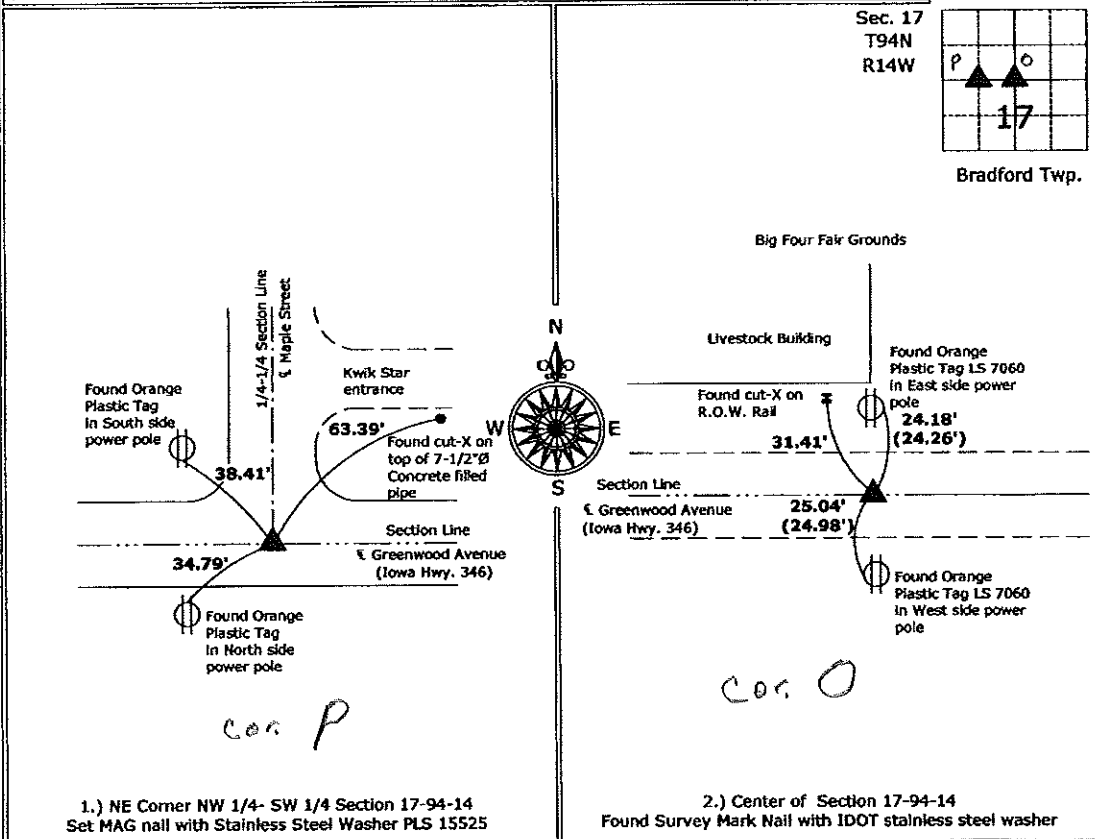
**Monument Description and Remarks:**

1.) **Northeast Corner of the NW 1/4 of the SW 1/4:** Set Survey Mark Nail w/stainless steel washer PLS 15525 from the ties on the previous section corner certificate.

2.) **Center:** Fd Survey Mark Nail w/stainless steel washer I.D.O.T. matching the ties on the previous section corner certificate, that certificate indicated the monument to be an I.D.O.T. Alum. Monu., it has been replaced after the last HMA overlay.

**PLAN - VIEW**

(Show a minimum of three reference ties to durable physical objects, relevant monuments and physical conditions that will enable recovery of the corner.)



1.) NE Corner NW 1/4 - SW 1/4 Section 17-94-14  
Set MAG nail with Stainless Steel Washer PLS 15525

2.) Center of Section 17-94-14  
Found Survey Mark Nail with IDOT stainless steel washer



I hereby certify that this land surveying document was prepared and the related survey work was performed by me or under my direct personal supervision and that I am a duly licensed Land Surveyor under the laws of the State of Iowa.

*Paul R. Herold* 10-26-09  
Paul R. Herold Date:  
License number 15525  
My license renewal date is December 31, 2010.  
Sheets covered by this seal: Individual sheet only

List Corners to be Indexed			
Corners	Section	Twp.	Range
NE NW SW	17	94	14
Center	17	94	14

Project Number: 2009-088  
FB: Chickasaw Nashua 1, Pg. 6-7

File: S:\Projects\2009\2009-088\dwg\2009-088.dwg, 10/26/2009 01:18:29

UNITED STATES PUBLIC LAND SURVEY CORNER CERTIFICATE

OF

Land Survey Monuments situated in Section 17, Township 94 North, Range 14 West, of the Fifth Principal Meridian, CHICKASAW County, Iowa. Previously recorded in none in County Recorder's Office. (book, page, document number, etc.)

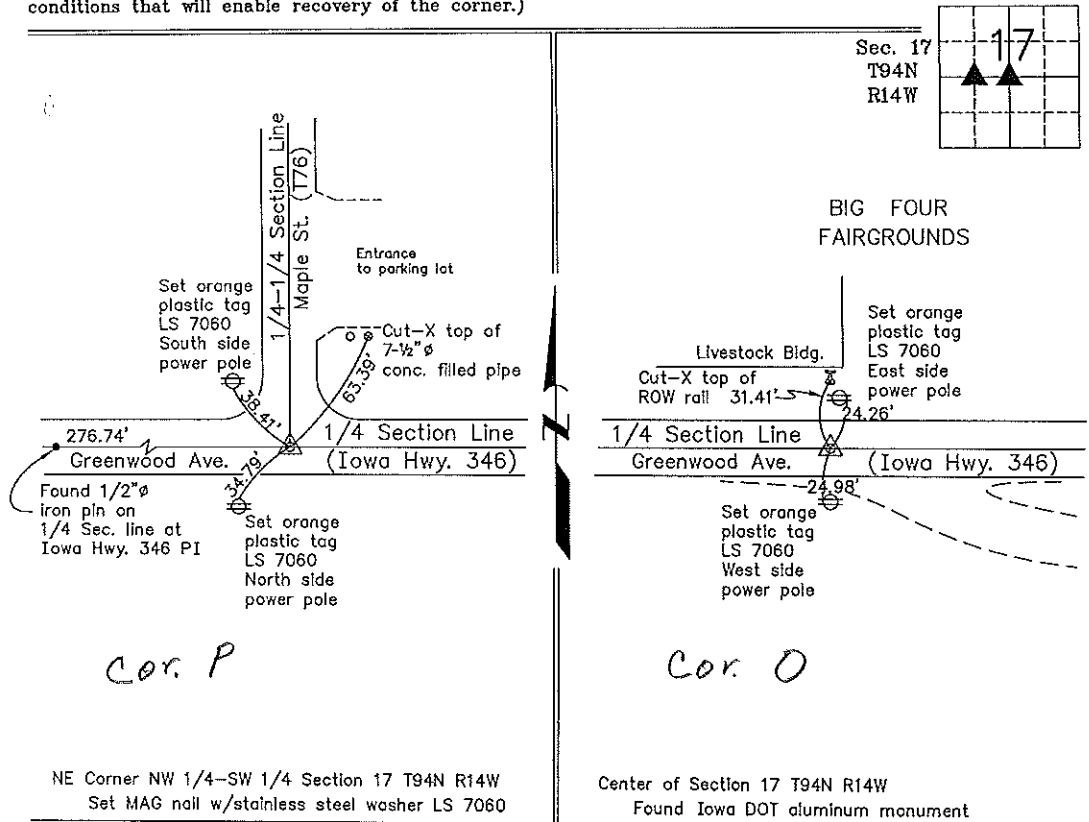
(Show reason for preparing this certificate, the evidence and detailed procedures used in establishing the corner positions and monumentation found or placed.)

Monument Description and Remarks: NE Corner NW 1/4-SW 1/4 Section 17 T94N R14W: Set MAG nail w/stainless steel washer LS 7060 at the intersection of Iowa Hwy. 346 and Maple Street.

Center of Section 17 T94N R14W: Found Iowa Department of Transportation aluminum monument with information obtained from Iowa Department of Transportation Corner Ties.

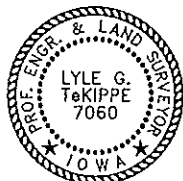
PLAN - VIEW

(Show a minimum of three reference ties to durable physical objects, relevant monuments and physical conditions that will enable recovery of the corner.)



NE Corner NW 1/4-SW 1/4 Section 17 T94N R14W  
Set MAG nail w/stainless steel washer LS 7060

Center of Section 17 T94N R14W  
Found Iowa DOT aluminum monument



I hereby certify that this land surveying document was prepared and the related survey work was performed by me or under my direct personal supervision and that I am a duly licensed Land Surveyor under the laws of the State of Iowa.

*Lyle G. TeKippe* 2-17-99  
Lyle G. TeKippe Date  
License number 7060  
My license renewal date is December 31, 2000.  
Sheets covered by this seal: Individual

List Corners to be Indexed			
Corners	Section	Twp.	Range
NE-NW-SW Corner Y	17	94N	14W
			17-94-14
Center Corner O	17	94N	14W
			17-94-14

170-344

Placed in tie Book  
2/22/99 "County Engineer's Copy"