

Prepared by & Return to Herold - Reck's Surveying, 10 East Main Street, New Hampton, IA 50659, Ph. 641-354-2725

**UNITED STATES PUBLIC LAND SURVEY CORNER CERTIFICATE**

Land Survey Monuments situated in Section 17, Township 94 North, Range 14 West of the Fifth Principal Meridian, Chickasaw County, Iowa. Previously recorded in Doc. #2004-2964 in the County Recorder's office.

This certificate is being prepared in compliance with Iowa Code Chapter 355.11 because:

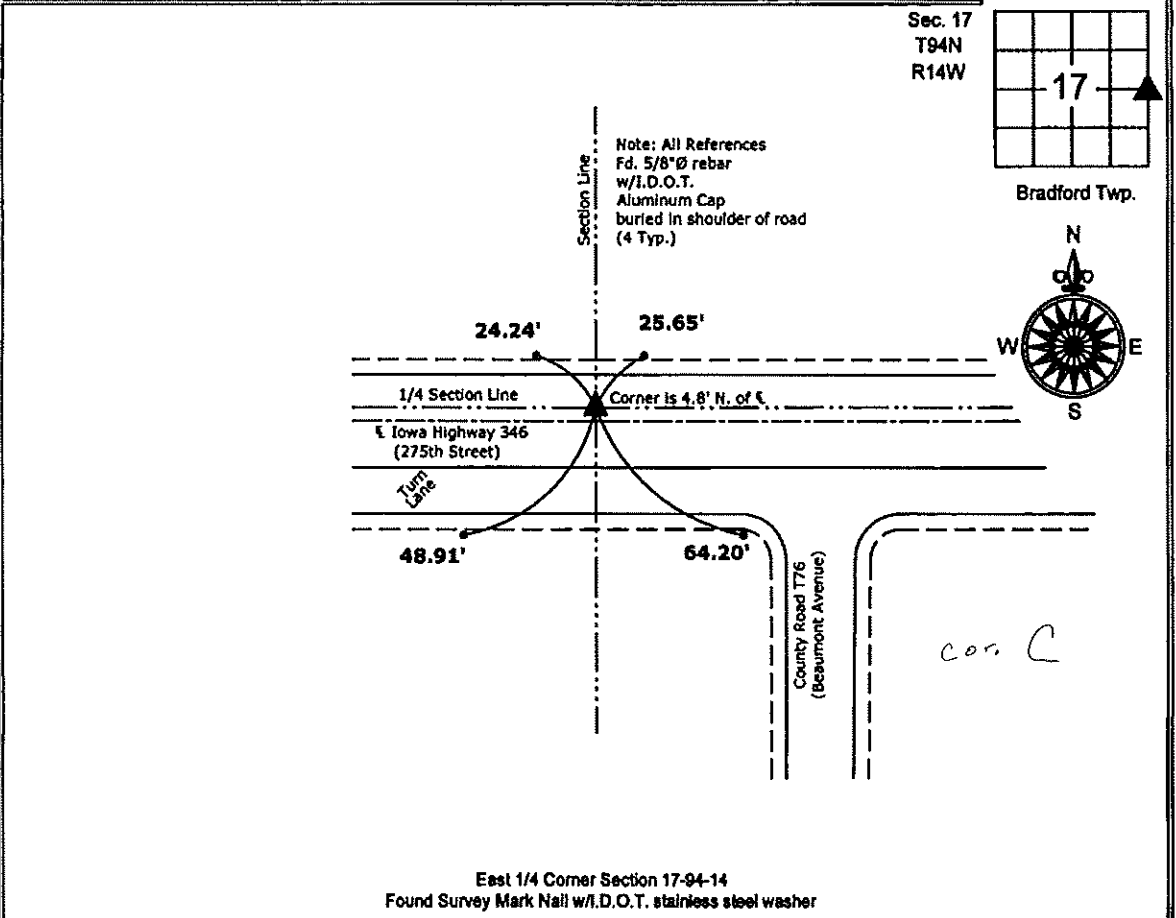
- There is no certificate on file for this corner.
- There are no longer three valid ties of record.
- There are changes to reference ties of record.
- There is change of monumentation of record.
- To clarify description of record monument (ties).

Monument Description and Remarks:

East 1/4 Corner: Found Survey Mark Nail with I.D.O.T. stainless steel washer with information obtained from previous Section Corner Certificate, the Section Corner monument was reset by the Iowa Department of Transportation after an HMA Overlay.

**PLAN - VIEW**

(Show a minimum of three reference ties to durable physical objects, relevant monuments and physical conditions that will enable recovery of the corner.)



East 1/4 Corner Section 17-94-14  
 Found Survey Mark Nail w/I.D.O.T. stainless steel washer



I hereby certify that this land surveying document was prepared and the related survey work was performed by me or under my direct personal supervision and that I am a duly licensed Land Surveyor under the laws of the State of Iowa.

*Paul R. Herold 8-19-11*  
 Paul R. Herold Date:

License number 15525  
 My license renewal date is December 31, 2012.  
 Sheets covered by this seal: Individual sheet only

List Corners to be Indexed			
Corners	Section	Twp.	Range
E 1/4	17	94	14

Project Number: 2011-087  
 FB: Nashua 1, Pgs. 10-11

Section 17-94-14  
 As referred to in  
 Engr. Tie Book

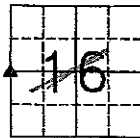
FILED 2004 - 2964  
 RECORDER'S OFFICE  
 CHICKASAW COUNTY, IOWA  
*Fee \$7.00*  
 2004 DEC 30 AM 9 29  
 CINDY MESSERSMITH  
 COUNTY RECORDER

PREPARED BY - S & S LAND SURVEYING, INC. 513 S. CHERRY, SUITE B, PO BOX 286, SHELL ROCK, IOWA 50670 - PHONE 519-885-4244

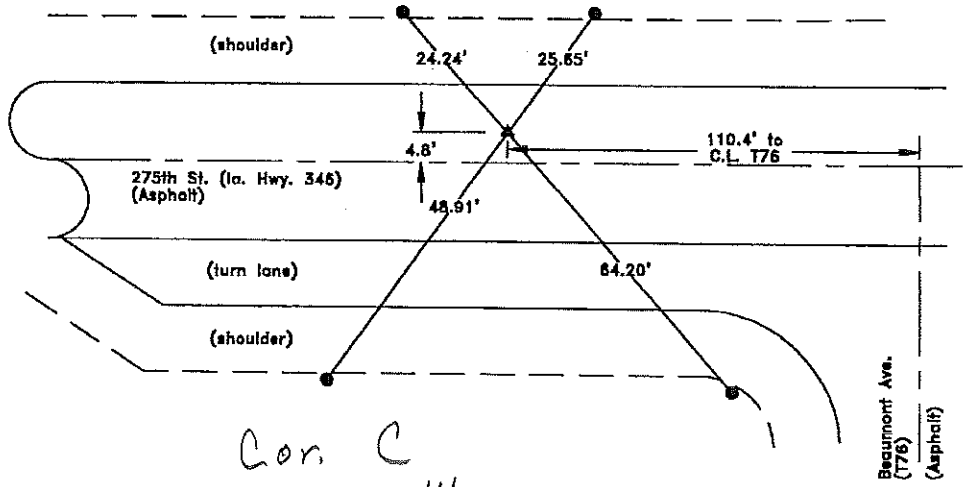
UNITED STATES PUBLIC LAND SURVEY CORNER CERTIFICATE

OF  
 Land Survey Monuments situated in Section 16 17, Township 94 North, Range 14 West, of the Fifth Principal Meridian, Chickasaw County, Iowa.  
 Previously recorded in Book 170, Page 343.

Corner was located for Land Survey in the North 1/2 of the S.W. 1/4 of Section 16. Corner was located using previously recorded Corner Certificate and I.D.O.T. Ia. Hwy. 346 as-built plans. Corner is being re-certified due to changes in reference monuments.



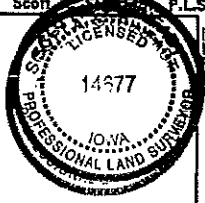
PLAN-VIEW  
 NO SCALE



Cor. C  
 17-94-14

- ▲ GOVERNMENT CORNER MONUMENT FOUND  
 P-K NAIL IN ASPHALT
- FOUND 5/8" IRON PIN w/ ALUMINUM IOWA  
 D.O.T. CAP WITH PUNCH MARK, 10" DEEP

I hereby certify that this land surveying document was prepared and the related survey work was performed by me or under my direct personal supervision and that I am a duly Licensed Professional Land Surveyor under the laws of the State of Iowa.  
*Scott A. Sheffert*  
 Scott A. Sheffert P.L.S. 12-28-04  
 date



Iowa License No. 14677  
 by License Renewal Date: Dec. 31, 2006.  
 Pages or sheets covered by this seal:  
 this page only.

S & S  
 LAND SURVEYING, INC.  
 513 S. CHERRY, SUITE "B"  
 PO BOX 286  
 SHELL ROCK, IOWA 50670  
 (519) 885-4244

List Corners to be Indexed

Corners	Section	Twp	Range
West 1/4	16	94 North	14 West

Section 16-94-14  
As ref. to in  
Engl. Trc Book

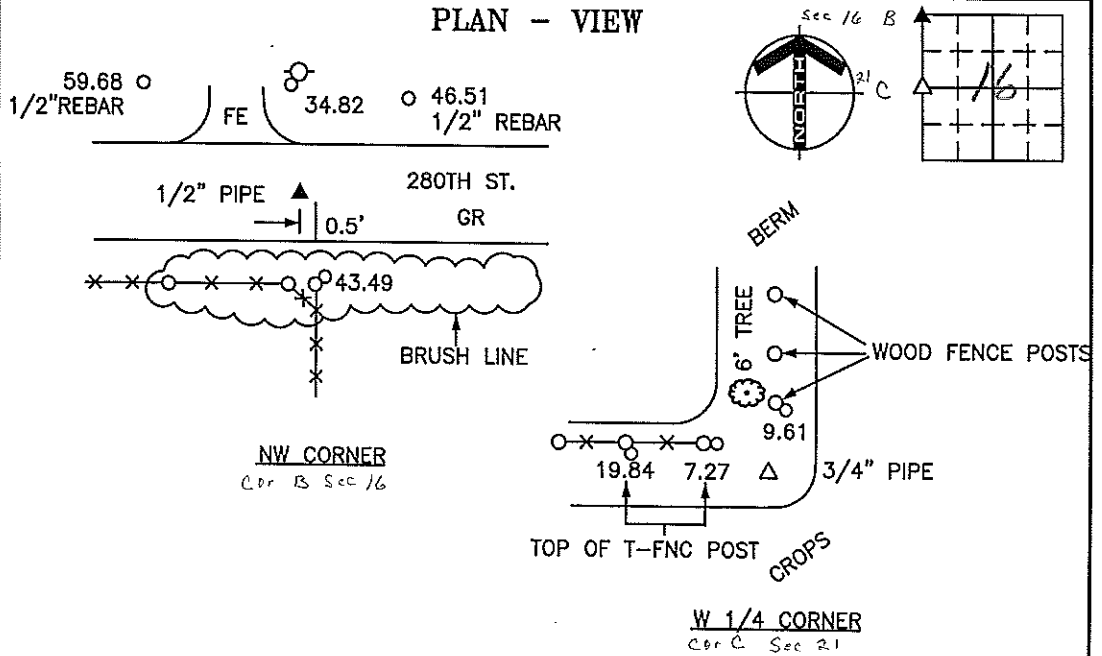
PREPARED BY: DARYL EIFFLER, 215 N ADAMS, MASON CITY, IOWA 50401, 641-424-6344

**UNITED STATES PUBLIC LAND SURVEY CORNER CERTIFICATE OF**

Land Survey Monuments situated in Section 22 <sup>16</sup>, Township 94 NORTH, Range 14 WEST, of the Fifth Principal Meridian, CHICKASAW County, Iowa  
Previously recorded in DOES NOT APPLY in County Recorder's Office.  
(book, page, document number, etc.)

Monument Description and Remarks: NO CERTIFICATES OF RECORD FOR THESE CORNERS.  
NW CORNER - FOUND 1/2" PIPE 0.3' DOWN USING CHICKASAW ENGINEERING DEPT. REFERENCE TIE SHEET. SET TIES AS SHOWN.  
W 1/4 CORNER - DUG & PROBED AT PROBABLE LOCATION AND FOUND NOTHING. SET 3/4"  
PIPE MIDWAY AND ON-LINE BETWEEN NW CORNER AND SW CORNER WHICH MATCHES WITHIN 2' OF FENCE INTERSECTION WEST AND NORTH. SET TIES AS SHOWN.

**PLAN - VIEW**



**LEGEND**

- - UTILITY POLE
- ⊗ - EXISTING FENCE, FENCE POST
- ▲ - FOUND LAND CORNER
- - SET LAND CORNER
- - FOUND REFERENCE TIE
- - SET REFERENCE TIES ARE A BRASS DISK STAMPED RLS 13804 UNLESS NOTED
- SRP - SURVEY REFERENCE POINT
- ACC - ASPHALT CEMENT CONCRETE SURFACING
- PCC - PORTLAND CEMENT CONCRETE SURFACING
- GR - GRAVEL SURFACING

**ENGINEERS • ARCHITECTS**  
**SURVEYORS • PLANNERS**  
**LANDSCAPE ARCHITECTS**  
**YAGGY COLBY ASSOCIATES**  
215 NORTH ADAMS  
MASON CITY, IOWA 50401  
641-424-6344  
FAX 641-424-0351

FILE 941422

I HEREBY CERTIFY THAT THIS LAND SURVEYING DOCUMENT WAS PREPARED BY ME OR UNDER MY DIRECT PERSONAL SUPERVISION AND THAT I AM A DULY LICENSED LAND SURVEYOR UNDER THE LAWS OF THE STATE OF IOWA.

Daryl Eiffler  
DARYL EIFFLER  
DATE: 12/22/00 LICENSE NO. 13804  
MY LICENSE RENEWAL DATE IS DECEMBER 31, 2000  
2000-2309

Corners	List Corners to be Indexed		
	Section	Twp	Range
NW	22	94N	14W
B	16		
W 1/4	22	94N	14W
C	21		

SEAL PROJECT NO. 7036

Filed 3-20-01