

UNITED STATES PUBLIC LAND SURVEY CORNER CERTIFICATE

OF

Land Survey Monuments situated in Section 17, Township 94 North, Range 14 West, of the Fifth Principal Meridian, CHICKASAW County, Iowa.

Previously recorded in none in County Recorder's Office.
(book, page, document number, etc.)

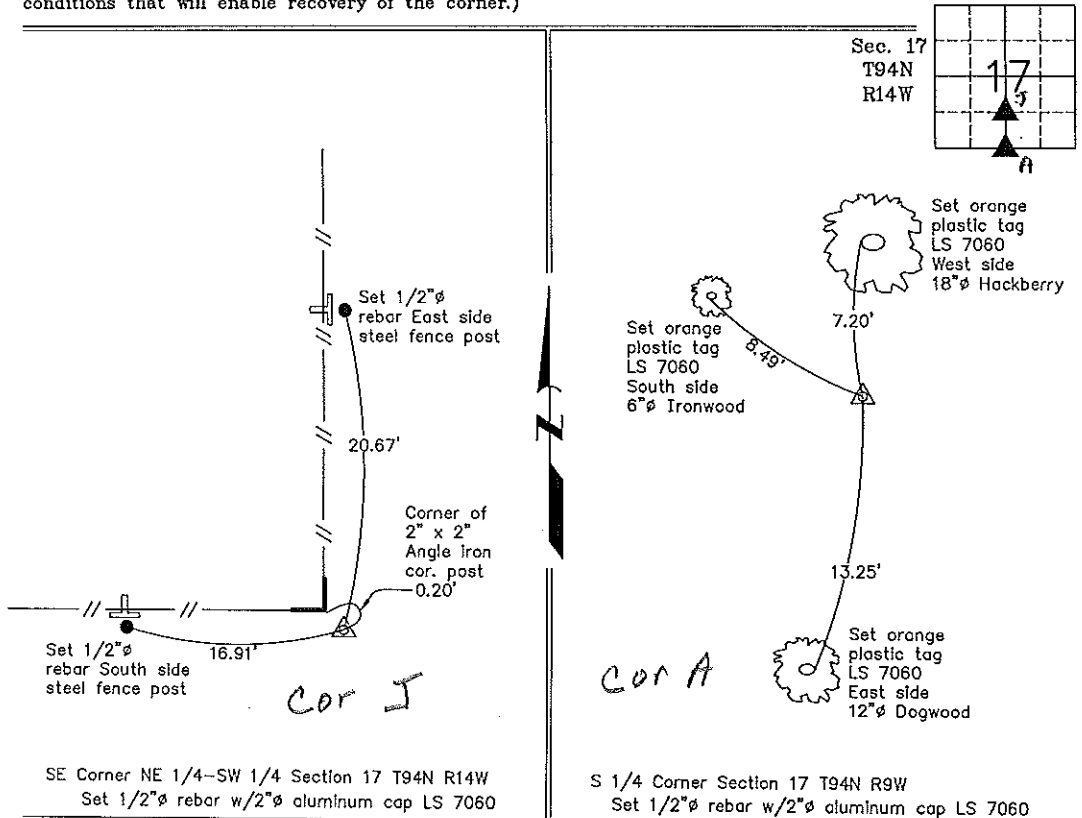
(Show reason for preparing this certificate, the evidence and detailed procedures used in establishing the corner positions and monumentation found or placed.)

Monument Description and Remarks: SE Corner NE 1/4-SW 1/4 Section 17 T94N R14W:
Set 1/2"Ø rebar w/2"Ø aluminum cap LS 7060 at an existing fence corner after comparing that position to adjacent corners of the Section..

S 1/4 Corner Section 17 T94N R14W: Set 1/2"Ø rebar w/2"Ø aluminum cap LS 7060 by doubling the distance from the Center of Section 17 to and across the SE Corner NE 1/4-SW 1/4 Section 17.

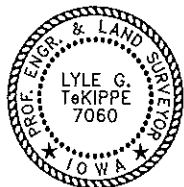
PLAN - VIEW

(Show a minimum of three reference ties to durable physical objects, relevant monuments and physical conditions that will enable recovery of the corner.)



SE Corner NE 1/4-SW 1/4 Section 17 T94N R14W
Set 1/2"Ø rebar w/2"Ø aluminum cap LS 7060

S 1/4 Corner Section 17 T94N R9W
Set 1/2"Ø rebar w/2"Ø aluminum cap LS 7060



I hereby certify that this land surveying document was prepared and the related survey work was performed by me or under my direct personal supervision and that I am a duly licensed Land Surveyor under the laws of the State of Iowa.

Lyle G. TeKippe 2-17-99
Lyle G. TeKippe Date
License number 7060
My license renewal date is December 31, 2000.
Sheets covered by this seal: Individual

List Corners to be Indexed			
Corners	Section	Twp.	Range
SE-NE-SW	17	94N	14W
Corner X 17-94-14			
S 1/4	17	94N	14W
Corner A 17-94-14			