

Prepared by & Return to Herold - Recks Surveying, 10 East Main Street, New Hampton, IA 50659, Ph. 641-394-2725

UNITED STATES PUBLIC LAND SURVEY CORNER CERTIFICATE

Land Survey Monuments situated in Section 17, Township 94 North, Range 14 West of the Fifth Principal Meridian, Chickasaw County, Iowa. 1.) Previously recorded in Bk. 172, Pg. 262, 2.) Not previously recorded in the County Recorder's office.

This certificate is being prepared in compliance with Iowa Code Chapter 355.11 because:



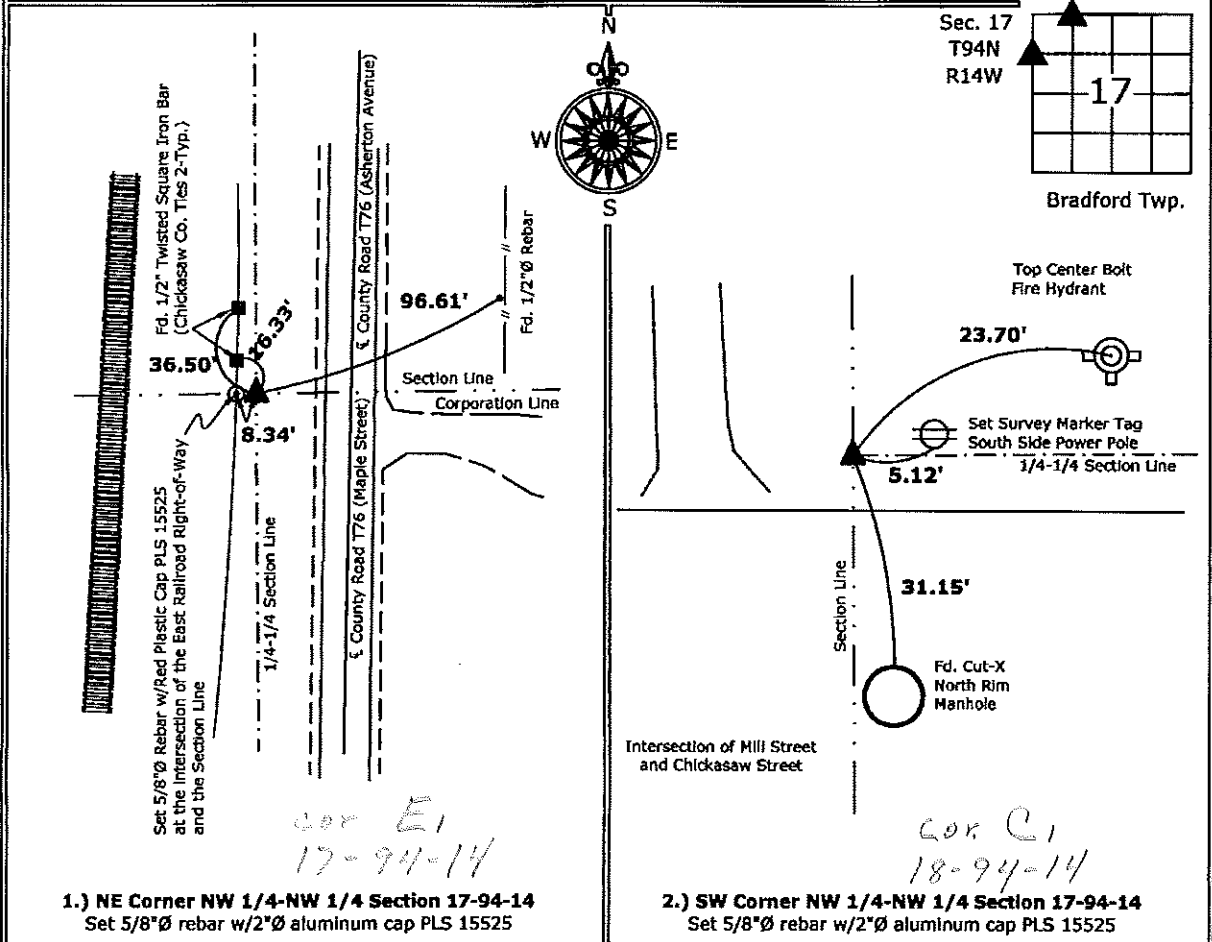
- 2. There is no certificate on file for this corner.
- 1. There are no longer three valid ties of record.
- 1. There are changes to reference ties of record.
- 1. There is change of monumentation of record.
- 1. To clarify description of record monument (ties).

Monument Description and Remarks:

- 1.) **Northeast Corner NW 1/4-NW 1/4:** Set 5/8"Ø Rebar w/2"Ø Aluminum Cap, PLS 15525, Equidistant and on line between the Northwest Corner and the North Quarter Corner of Section 17.
- 2.) **Southwest Corner NW 1/4-NW 1/4:** Set 5/8"Ø Rebar w/2"Ø Aluminum Cap, PLS 15525, Equidistant and on line between the Northwest Corner and the West Quarter Corner of Section 17, the previous monument was removed from the construction of a water main and fire hydrant replacement, all of the previous ties are missing.

PLAN - VIEW

(Show a minimum of three reference ties to durable physical objects, relevant monuments and physical conditions that will enable recovery of the corner.)



1.) NE Corner NW 1/4-NW 1/4 Section 17-94-14
 Set 5/8"Ø rebar w/2"Ø aluminum cap PLS 15525

2.) SW Corner NW 1/4-NW 1/4 Section 17-94-14
 Set 5/8"Ø rebar w/2"Ø aluminum cap PLS 15525



I hereby certify that this land surveying document was prepared and the related survey work was performed by me or under my direct personal supervision and that I am a duly licensed Land Surveyor under the laws of the State of Iowa.

Paul R. Herold 5-3-12

List Corners to be Indexed

Corners	Section	Twp.	Range
NE-NW-NW	17	94	14
SW-NW-NW	17	94	14