

Section 8-94-14  
 As referred to in  
 Engr. Tie Book

SLSI 9-90

UNITED STATES PUBLIC LAND SURVEY CORNER CERTIFICATE

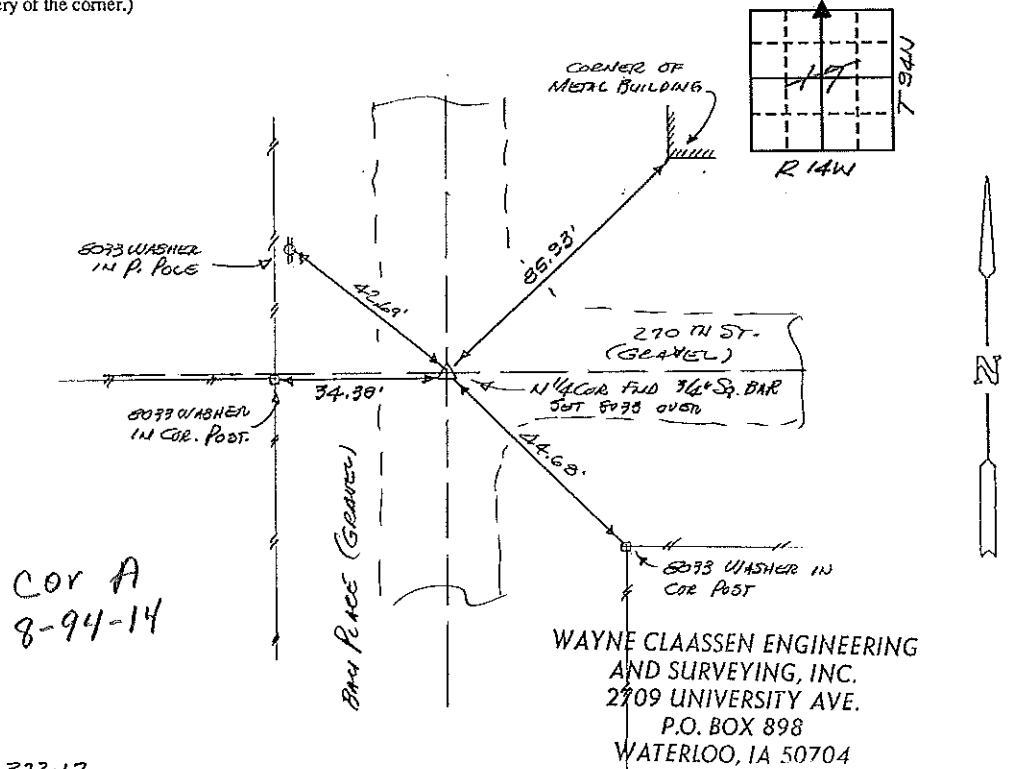
OF  
 8  
 Land Survey Monuments situated in Section 17, Township 94N, Range  
14W, of the Fifth Principal Meridian, CHICKASAW County, Iowa.  
 Previously recorded in N/A in County Recorder's Office.  
(book, page, document number, etc.)

(Show reason for preparing this certificate, the evidence and detailed procedures used in establishing the corner positions and monumentation found or placed.)

Monument Description and Remarks: FOUND 3/4" SQUARE TWISTED RE BAR 1.7' DEEP  
USING A1-S DIMENSION AS RECORDED ON PLAT DOCUMENT NO. 02242.  
SET 1/2" REBAR w/ CAP NO. 8033 OVER TOP OF FOUND 3/4" BAR.  
(N 1/4 COR. SEC. 17-94-14)

PLAN - VIEW

(Show a minimum of three reference ties to durable physical objects, relevant monuments and physical conditions that will enable recovery of the corner.)



COR A  
 8-94-14

WAYNE CLAASSEN ENGINEERING  
 AND SURVEYING, INC.  
 2709 UNIVERSITY AVE.  
 P.O. BOX 898  
 WATERLOO, IA 50704

372-17

I hereby certify that the survey work was completed and this certificate was prepared by me or under my direct personal supervision and that I am a duly registered land surveyor under the laws of the state of Iowa.

Signature: F. William King  
 Name typed or printed: F. William King  
 Date: 8-27-1992 Reg. No. 8033

Corners	List Corners to be Indexed		
	Section	Twp	Range
N 1/4	17	94N	14W

Placed  
 in tie book  
 8/28/92

SEAL



150-225