

Prepared by & Return to: Harold - Recks Surveying, 10 East Main Street, New Hampton, IA 50658, Ph. 641-394-2725

UNITED STATES PUBLIC LAND SURVEY CORNER CERTIFICATE

Land Survey Monuments situated in Section 16, Township 94 North, Range 14 West of the Fifth Principal Meridian, Chickasaw County, Iowa. 1.) Not previously recorded in the County Recorder's office. 2.) Previously recorded in Doc. #2002-0750 in the County Recorder's office.

This certificate is being prepared in compliance with Iowa Code Chapter 355.11 because:



- There is no certificate on file for this corner.
- There are no longer three valid ties of record.
- There are changes to reference ties of record.
- There is change of monumentation of record.
- To clarify description of record monument (ties).

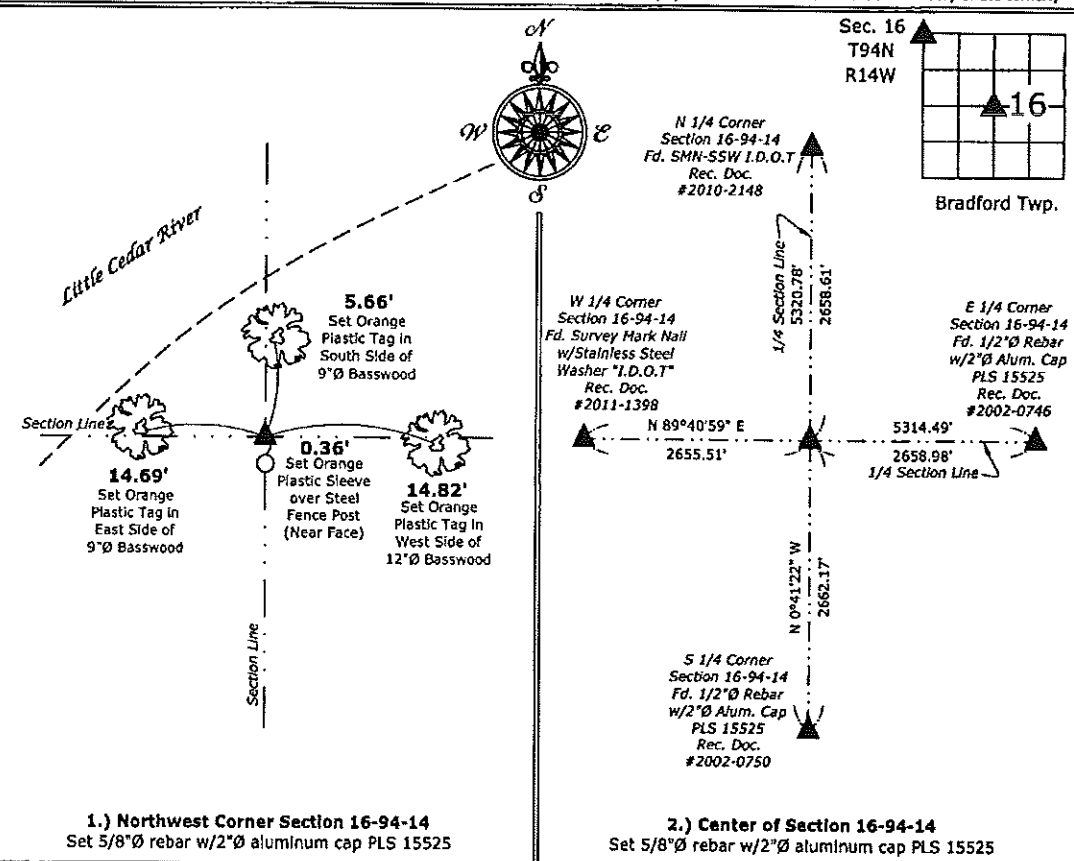
Monument Description and Remarks:

1.) Northwest Corner: Set 5/8"Ø rebar w/2"Ø aluminum cap PLS 15525 at the intersection of the monumented North and West Lines of the Northwest Quarter of said Section, as shown on a Survey and Plat recorded in Book 100, Page 125 in the County Recorder's office, New Hampton, Iowa.

2.) Center: Set 5/8"Ø rebar w/2"Ø aluminum cap PLS 15525 at the intersection of 1/4-1/4 Section Lines. Previous monument and all reference ties were destroyed during the removal of the East-West fence shown on the previous Section Corner Certificate.

PLAN - VIEW

(Show a minimum of three reference ties to durable physical objects, relevant monuments and physical conditions that will enable recovery of the corner.)



I hereby certify that this land surveying document was prepared and the related survey work was performed by me or under my direct personal supervision and that I am a duly licensed Land Surveyor under the laws of the State of Iowa.

Paul R. Herold 12-14-15
 Paul R. Herold Date:
 License number 15525
 My license renewal date is December 31, 2016.
 Sheets covered by this seal: Individual sheet only

List Corners to be Indexed			
Corners	Section	Twp.	Range
NW	16	94	14
CTR	16	94	14

Project Number: 2015-129
 FB: Chickasaw County 7, Pgs. 44-45

File: S:_C3D Projects\County Control Systems\CHICKASAW\CHICK-38\CHICK-38.dwg, 12/14/2015 8:39:11 AM

Section 16-94-14
 As ref. to in
 Engr. Trc Book

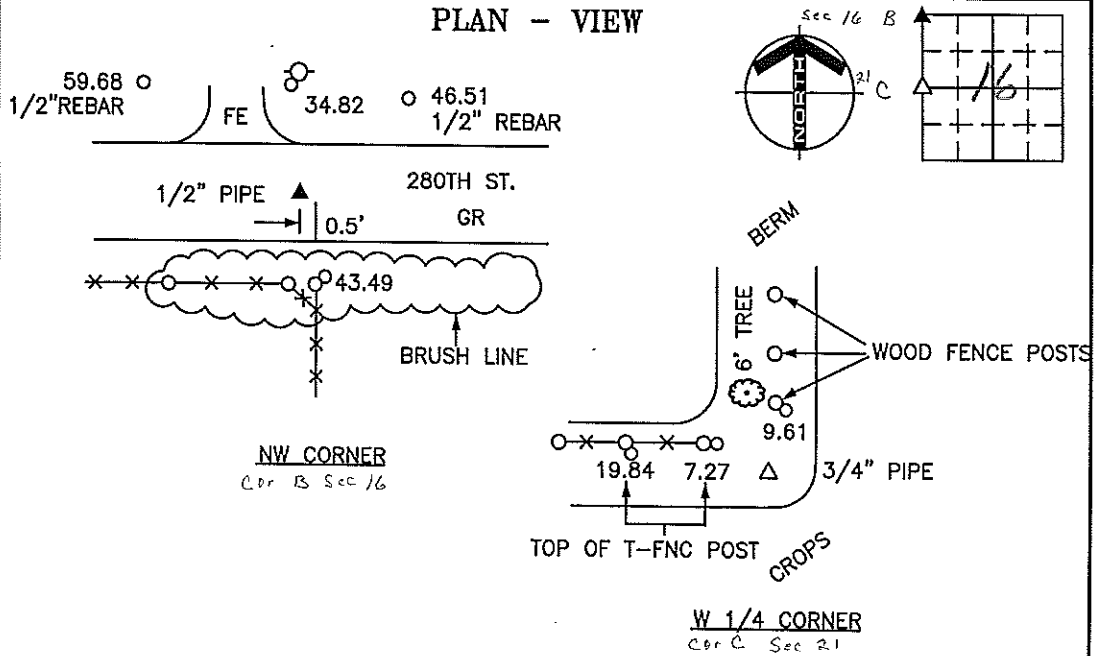
PREPARED BY: DARYL EIFFLER, 215 N ADAMS, MASON CITY, IOWA 50401, 641-424-6344

UNITED STATES PUBLIC LAND SURVEY CORNER CERTIFICATE OF

Land Survey Monuments situated in Section 22 ¹⁶, Township 94 NORTH, Range 14 WEST, of the Fifth Principal Meridian, CHICKASAW County, Iowa
 Previously recorded in DOES NOT APPLY in County Recorder's Office.
 (book, page, document number, etc.)

Monument Description and Remarks: NO CERTIFICATES OF RECORD FOR THESE CORNERS.
NW CORNER - FOUND 1/2" PIPE 0.3' DOWN USING CHICKASAW ENGINEERING DEPT. REFERENCE TIE SHEET. SET TIES AS SHOWN.
W 1/4 CORNER - DUG & PROBED AT PROBABLE LOCATION AND FOUND NOTHING. SET 3/4" PIPE MIDWAY AND ON-LINE BETWEEN NW CORNER AND SW CORNER WHICH MATCHES WITHIN 2' OF FENCE INTERSECTION WEST AND NORTH. SET TIES AS SHOWN.

PLAN - VIEW



LEGEND

- - UTILITY POLE
- x - x - ○ - EXISTING FENCE, FENCE POST
- ▲ - FOUND LAND CORNER
- △ - SET LAND CORNER
- - FOUND REFERENCE TIE
- - SET REFERENCE TIES ARE A BRASS DISK STAMPED RLS 13804 UNLESS NOTED
- SRP - SURVEY REFERENCE POINT
- ACC - ASPHALT CEMENT CONCRETE SURFACING
- PCC - PORTLAND CEMENT CONCRETE SURFACING
- GR - GRAVEL SURFACING

ENGINEERS • ARCHITECTS
SURVEYORS • PLANNERS
LANDSCAPE ARCHITECTS
YAGGY COLBY ASSOCIATES
 215 NORTH ADAMS
 MASON CITY, IOWA 50401
 641-424-6344
 FAX 641-424-0351

FILE 941422

I HEREBY CERTIFY THAT THIS LAND SURVEYING DOCUMENT WAS PREPARED BY ME OR UNDER MY DIRECT PERSONAL SUPERVISION AND THAT I AM A DULY LICENSED LAND SURVEYOR UNDER THE LAWS OF THE STATE OF IOWA.
Daryl Eiffler
 DARYL EIFFLER
 DATE: 12/22/00 LICENSE NO. 13804
 MY LICENSE RENEWAL DATE IS DECEMBER 31, 2000
2000-2309
 SEAL PROJECT NO. 7036

Corners	List Corners to be Indexed		
	Section	Twp	Range
NW	22	94N	14W
B	16		
W 1/4	22	94N	14W
C	21		

Filed 3-20-01

