

UNITED STATES PUBLIC LAND SURVEY CORNER CERTIFICATE

OF

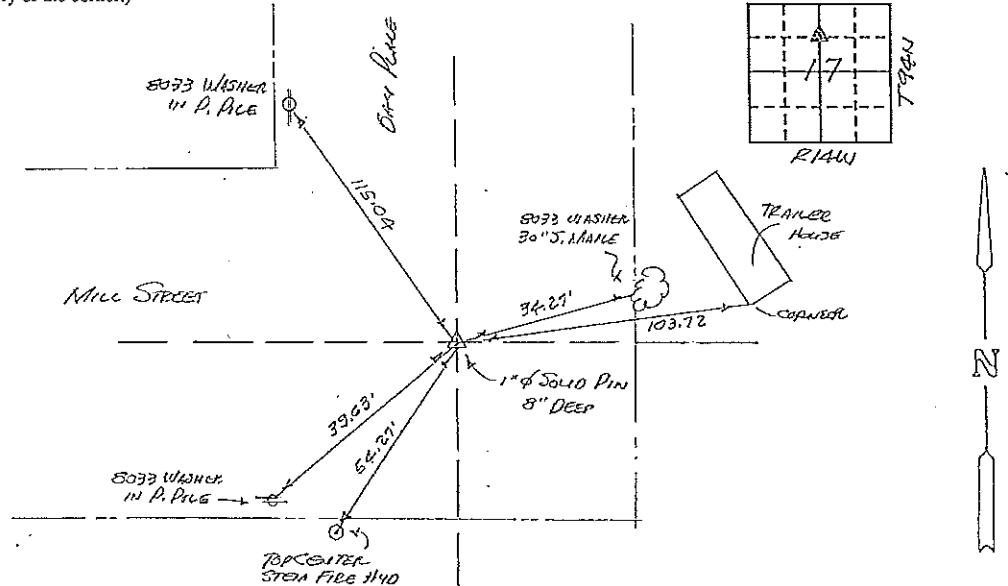
Land Survey Monuments situated in Section 17, Township 94N, Range 14W, of the Fifth Principal Meridian, CHICKASAW County, Iowa. Previously recorded in N/A in County Recorder's Office.

(Show reason for preparing this certificate, the evidence and detailed procedures used in establishing the corner positions and monumentation found or placed.)

Monument Description and Remarks: FOUND 1" Ø SOLID PIN, 8" DEEP USING N-S DIMENSION  
AS RECORDED ON PLAT DOCUMENT NO. 02242.  
(SW COR. NW 1/4 NE 1/4)

PLAN - VIEW

(Show a minimum of three reference ties to durable physical objects, relevant monuments and physical conditions that will enable recovery of the corner.)



WAYNE CLAASSEN ENGINEERING AND SURVEYING, INC.  
 2709 UNIVERSITY AVE.  
 P.O. BOX 898  
 WATERLOO, IA 50704

372-17

I hereby certify that the survey work was completed and this certificate was prepared by me or under my direct personal supervision and that I am a duly registered land surveyor under the laws of the state of Iowa.

Signature: F. Williams King  
 Name typed or printed: F. Williams King  
 Date: 8-27-1992 Reg. No. 8033

Corners	List Corners to be Indexed		
	Section	Twp	Range
SW COR NW 1/4 NE 1/4	17	94N	14W

SEAL



DOCUMENT No. 00495 FILED FOR RECORD THE 28th DAY OF August, 1992 AT 9:34 O'CLOCK AM BOOK 150 PAGE 224

STATE OF IOWA, CHICKASAW COUNTY, Mary C. Murray Recorder  
 By MARY C. MURRAY Date

RECORDING FEE \$ 5.00  
 TRANSFER FEE \$ \_\_\_\_\_