

Prepared by & Return to Herold - Recks Surveying, 10 East Main Street, New Hampton, IA 50659, Ph. 641-394-2725

UNITED STATES PUBLIC LAND SURVEY CORNER CERTIFICATE

Land Survey Monuments situated in Section 17, Township 94 North, Range 14 West of the Fifth Principal Meridian, Chickasaw County, Iowa. 1.) Previously recorded in Bk. 172, Pg. 262, 2.) Not previously recorded in the County Recorder's office.

This certificate is being prepared in compliance with Iowa Code Chapter 355.11 because:



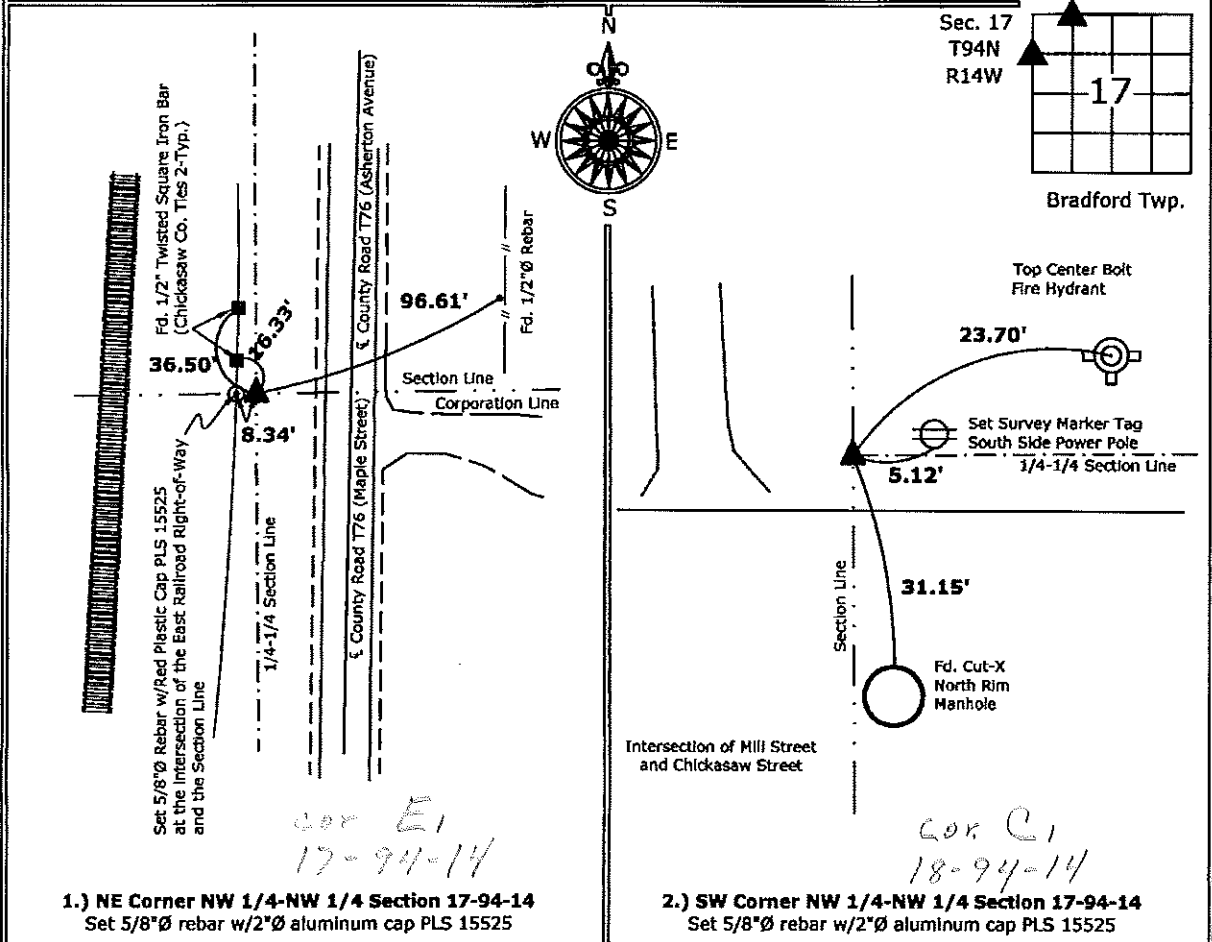
- 2. There is no certificate on file for this corner.
- 1. There are no longer three valid ties of record.
- 1. There are changes to reference ties of record.
- 1. There is change of monumentation of record.
- 1. To clarify description of record monument (ties).

Monument Description and Remarks:

- 1.) **Northeast Corner NW 1/4-NW 1/4:** Set 5/8"Ø Rebar w/2"Ø Aluminum Cap, PLS 15525, Equidistant and on line between the Northwest Corner and the North Quarter Corner of Section 17.
- 2.) **Southwest Corner NW 1/4-NW 1/4:** Set 5/8"Ø Rebar w/2"Ø Aluminum Cap, PLS 15525, Equidistant and on line between the Northwest Corner and the West Quarter Corner of Section 17, the previous monument was removed from the construction of a water main and fire hydrant replacement, all of the previous ties are missing.

PLAN - VIEW

(Show a minimum of three reference ties to durable physical objects, relevant monuments and physical conditions that will enable recovery of the corner.)



1.) NE Corner NW 1/4-NW 1/4 Section 17-94-14
 Set 5/8"Ø rebar w/2"Ø aluminum cap PLS 15525

2.) SW Corner NW 1/4-NW 1/4 Section 17-94-14
 Set 5/8"Ø rebar w/2"Ø aluminum cap PLS 15525



I hereby certify that this land surveying document was prepared and the related survey work was performed by me or under my direct personal supervision and that I am a duly licensed Land Surveyor under the laws of the State of Iowa.

Paul R. Herold 5-3-12

List Corners to be Indexed

Corners	Section	Twp.	Range
NE-NW-NW	17	94	14
SW-NW-NW	17	94	14

UNITED STATES PUBLIC LAND SURVEY CORNER CERTIFICATE

OF

Land Survey Monuments situated in Section 18, Township 94 North, Range 14 West, of the Fifth Principal Meridian, CHICKASAW County, Iowa.

Previously recorded in none in County Recorder's Office.
(book, page, document number, etc.)

(Show reason for preparing this certificate, the evidence and detailed procedures used in establishing the corner positions and monumentation found or placed.)

Monument Description and Remarks:

SW Corner NE 1/4-NE 1/4 Section 18 T94N R14W: Set 1/2"Ø rebar with 2"Ø aluminum cap LS 7060 at the intersection of 1/4-1/4 section lines based on the standard mathematical subdivision of Section 18.

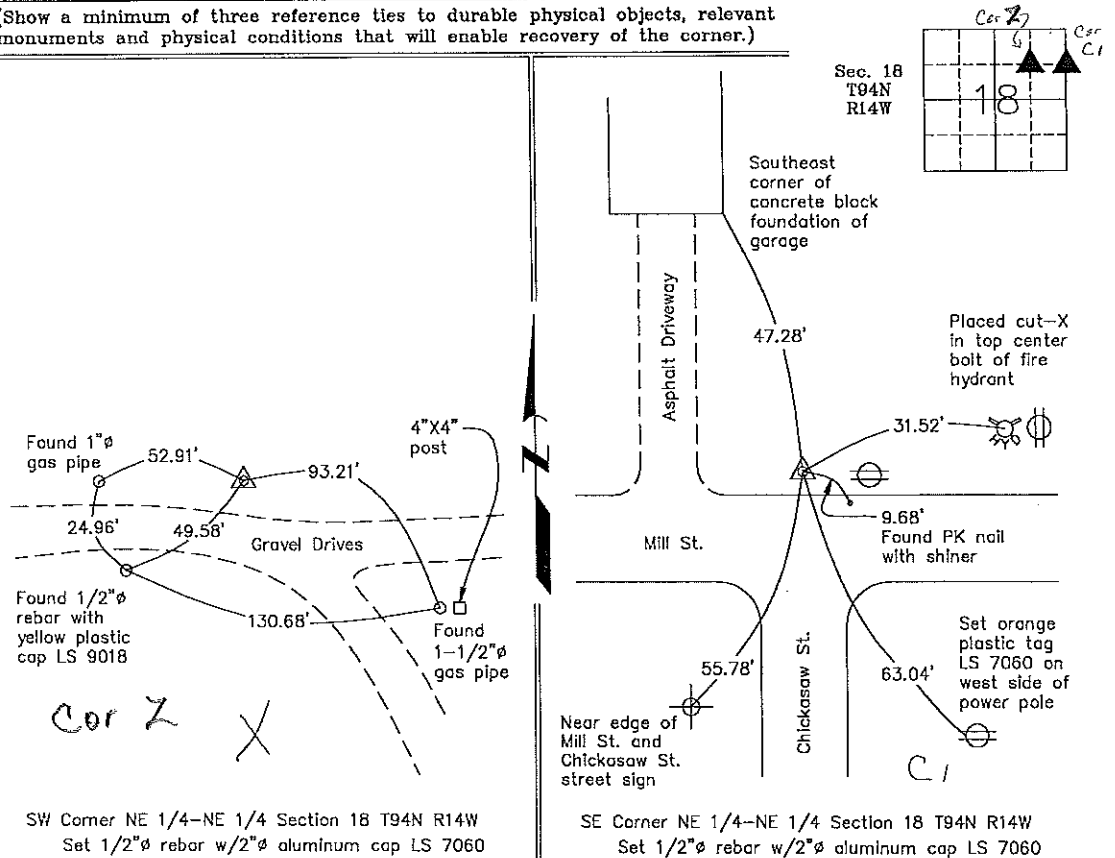
SE Corner NE 1/4-NE 1/4 Section 18 T94N R14W: Set 1/2"Ø rebar with 2"Ø aluminum cap LS 7060 equidistant and on line between the NE Corner and the E 1/4 Corner of Section 18.

Project No. 99117.LS

PLAN - VIEW

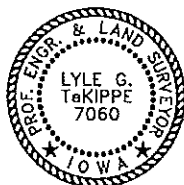
Field Book 46G, pages 9-11

(Show a minimum of three reference ties to durable physical objects, relevant monuments and physical conditions that will enable recovery of the corner.)



SW Corner NE 1/4-NE 1/4 Section 18 T94N R14W
Set 1/2"Ø rebar w/2"Ø aluminum cap LS 7060

SE Corner NE 1/4-NE 1/4 Section 18 T94N R14W
Set 1/2"Ø rebar w/2"Ø aluminum cap LS 7060



I hereby certify that this land surveying document was prepared and the related survey work was performed by me or under my direct personal supervision and that I am a duly licensed Land Surveyor under the laws of the State of Iowa.

Lyle G. TeKippe 7-14-99
Lyle G. TeKippe Date
License number 7060
My license renewal date is December 31, 2000.
Sheets covered by this seal: Individual

List Corners to be Indexed

Corners	Section	Twp.	Range
SW-NE-NE	18	94N	14W
SE-NE-NE	18	94N	14N

Corner C1 18-94-14
Corner Z 18-94-14
Placed in tie book 7-15-99