

Prepared by & Return to: Herald - Reicks Surveying, 10 East Main Street, New Hampton, IA 50659, Ph. 641-394-2725

### UNITED STATES PUBLIC LAND SURVEY CORNER CERTIFICATE

Land Survey Monuments situated in Section **18**, Township **94** North, Range **14** West of the Fifth Principal Meridian, **Chickasaw** County, Iowa. Not previously recorded in the County Recorder's office.

This certificate is being prepared in compliance with Iowa Code Chapter 355.11 because:

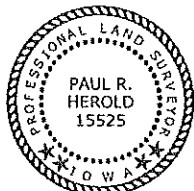
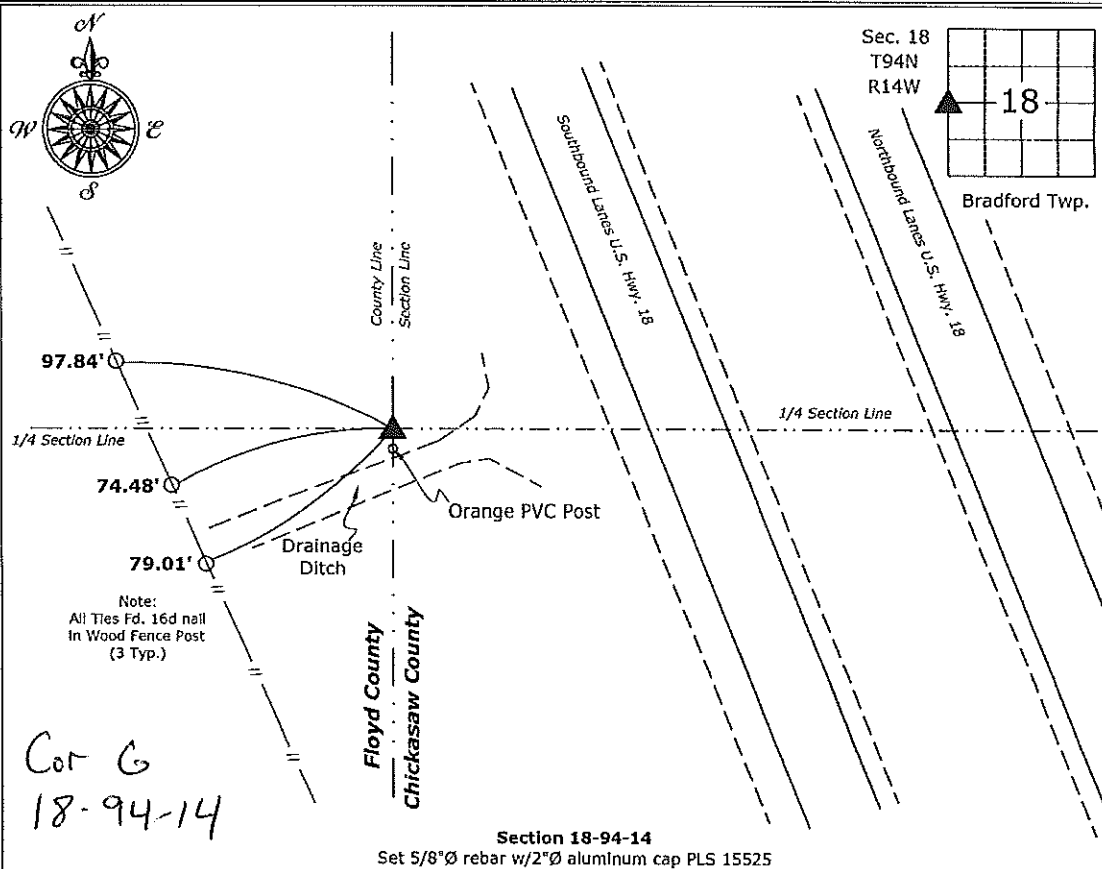
- There is no certificate on file for this corner.
- There are no longer three valid ties of record.
- There are changes to reference ties of record.
- There is change of monumentation of record.
- To clarify description of record monument (ties).

Monument Description and Remarks:

**W 1/4 Corner:** Fd. 3"Ø Alum. Disk I.D.O.T., From ties obtained from the Iowa Department of Transportation, District Office, Mason City, Iowa. Note: there is an orange PVC Post on the South side of the Corner.

#### PLAN - VIEW

(Show a minimum of three reference ties to durable physical objects, relevant monuments and physical conditions that will enable recovery of the corner.)



I hereby certify that this land surveying document was prepared and the related survey work was performed by me or under my direct personal supervision and that I am a duly licensed Land Surveyor under the laws of the State of Iowa.

*Paul R. Herold* 10-9-15  
 Paul R. Herold Date:  
 License number 15525  
 My license renewal date is December 31, 2016.  
 Sheets covered by this seal: Individual sheet only

List Corners to be Indexed			
Corners	Section	Twp.	Range
W 1/4	18	94	14
Project Number: 2015-136			
FB: Nashua 1, Pgs. 22-23			

Chickasaw COUNTY  
LAND SURVEY MONUMENT RECORD

Sec 18 T 94 N R 14 W

All items to be completed. Please print or type.

1. Type of Monument  
(check one)

- Section Corner                       Bench Mark
- Quarter Corner                       Other \_\_\_\_\_

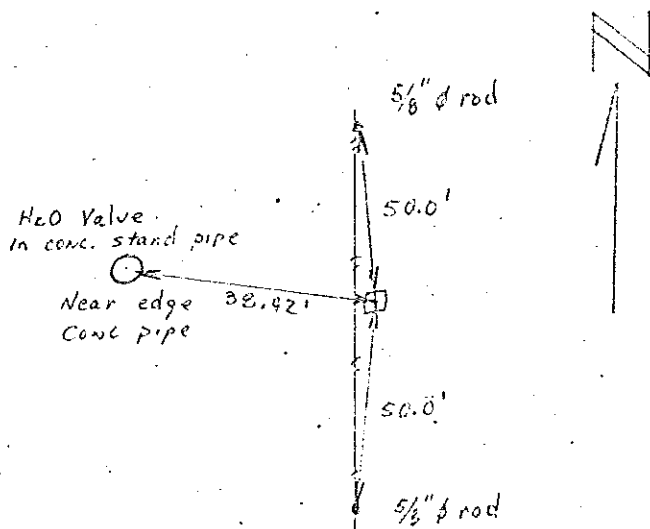
2. Description of Evidence found and location. W 1/4 cor Cor G  
Measured distance from SW to NW Cor of Sec. 18 = 5289.84'. Found that if 20,095 Ch dist of record on 1874 plat is expanded for SW 1/4 Sec. 18 we have 1326.27 ft x 2 = 2652.54 for West side SW 1/4. This dist split places 1/16 cor for SW 1/4 in reasonable relationship to fee along so line of Lot 9 in Sub. of SW 1/4. Also split of remainder (2637.30) for NW 1/4 Sec 18 places 1/16 cor for NW 1/4 with in 1.0± of fee running W thru Sec 15 Floyd Co. N-S Fee near W 1/4 cor Falls 5.0 West of Straight line between cors. Thus established cor at 2652.54 from SW cor Sec 18 and 5.0

3. Description of monument and/or accessories established by you to perpetuate the location of this point.

Set 5" x 5" x 36" conc. mon.  
and tied as in sketch  
at right.

D. BUSS  
J. DEENY  
D. ANDERSON

4. Sketch showing relative location of <sup>west of</sup> monument and reference points. Show 1/16 supporting and/or contradictory evidence where applicable.



Date of Field Work 9/29/75

Signed David Buss  
W H K S & Co.

Note: Mon. 5.0' West of straight line between NW & SW cor.