

Prepared by & Return to: Herold - Reicks Surveying, 10 East Main Street, New Hampton, IA 50659, Ph. 641-354-2725

**UNITED STATES PUBLIC LAND SURVEY CORNER CERTIFICATE**

Land Survey Monuments situated in Section 18, Township 94 North, Range 14 West of the Fifth Principal Meridian, Chickasaw County, Iowa. Previously recorded in Bk. 167, Pg. 75 in the County Recorder's office.

This certificate is being prepared in compliance with Iowa Code Chapter 355.11 because:

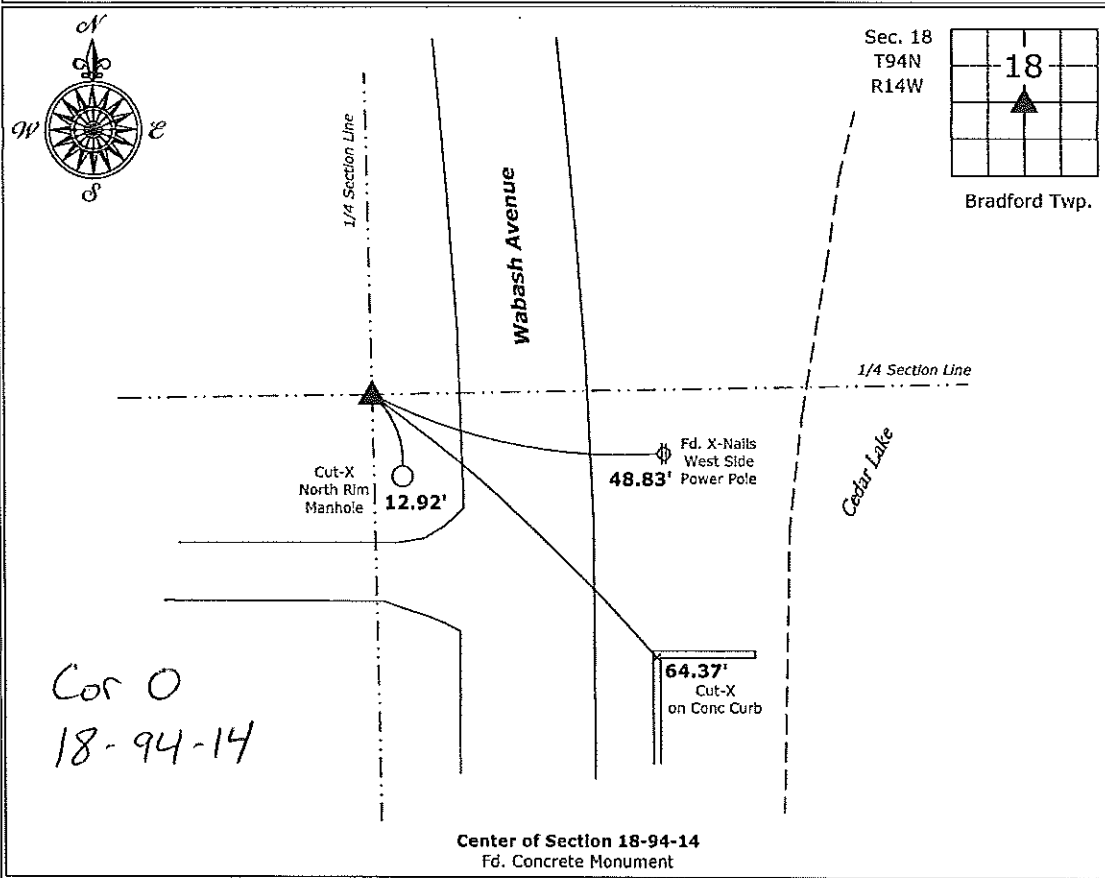
- There is no certificate on file for this corner.
- There are no longer three valid ties of record.
- There are changes to reference ties of record.
- There is change of monumentation of record.
- To clarify description of record monument (ties).

Monument Description and Remarks:

**Center of Section 18-94-14:** Fd. Concrete Monument w/ Iron Pin from Information on the previous Section Corner Certificate, the ties in the Maple Trees were grown over and unreliable, established new ties to perpetuate the corner position.

**PLAN - VIEW**

(Show a minimum of three reference ties to durable physical objects, relevant monuments and physical conditions that will enable recovery of the corner.)



I hereby certify that this land surveying document was prepared and the related survey work was performed by me or under my direct personal supervision and that I am a duly licensed Land Surveyor under the laws of the State of Iowa.

*Paul R. Herold* 10-9-15

Paul R. Herold Date:  
 License number 15525  
 My license renewal date is December 31, 2016.  
 Sheets covered by this seal: Individual sheet only

List Corners to be Indexed

Corners	Section	Twp.	Range
CTR	18	94	14

Project Number: 2015-136  
 FB: Nashua 1, Pgs. 22-23

UNITED STATES PUBLIC LAND SURVEY CORNER CERTIFICATE

OF

Land Survey Monuments situated in Section 18, Township 94 North, Range 14 West, of the Fifth Principal Meridian, CHICKASAW County, Iowa.

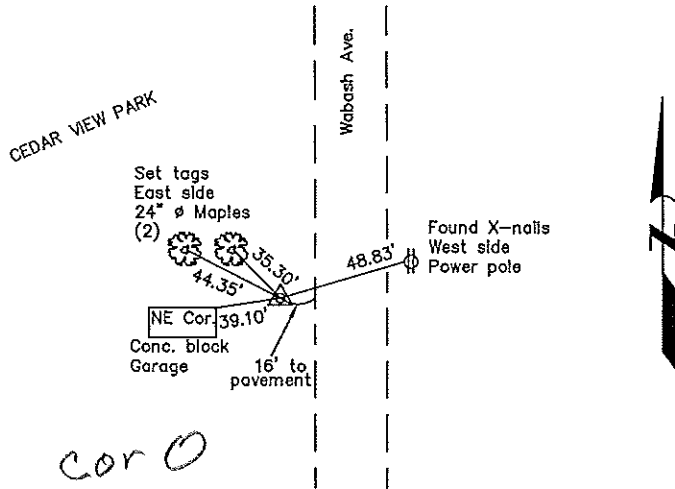
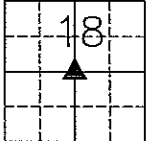
Previously recorded in none in County Recorder's Office.  
(book, page, document number, etc.)

(Show reason for preparing this certificate, the evidence and detailed procedures used in establishing the corner positions and monumentation found or placed.)

Monument Description and Remarks: Center of Section 18 T94N R14W: Found concrete monument w/1 1/2" ø rebar. Rebar was found from information obtained from the County Engineer's Office in field book "Bradford Township Corner Ties." The ties were provided by Wallace & Holand, October, 1975.

PLAN - VIEW

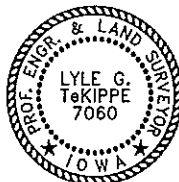
(Show a minimum of three reference ties to durable physical objects, relevant monuments and physical conditions that will enable recovery of the corner.)



cor 0

Center of Section 18 T94N R14W

I hereby certify that this land surveying document was prepared and the related survey work was performed by me or under my direct personal supervision and that I am a duly licensed Land Surveyor under the laws of the State of Iowa.



*Lyle G. TeKippe* 3-6-98  
Lyle G. TeKippe Date  
License number 7060  
My license renewal date is December 31, 1998.  
Sheets covered by this seal: Individual

List Corners to be Indexed			
Corners	Section	Twp.	Range
Center	18	94N	14W

Corner 0 18-94-14  
Placed in tie book  
3/25/98

*Chickasaw* COUNTY  
LAND SURVEY MONUMENT RECORD

Sec 18 T 94 N R 14 W

All items to be completed. Please print or type.

1. Type of Monument  
(check one)

- Section Corner       Bench Mark
- Quarter Corner       Other CENTER

2. Description of Evidence found and location. Center Cor O

*Iron rod found fits usage line running wly and checks reasonably well against dist of 794.1 as given from & of U.S. No 218.*

3. Description of monument and/or accessories established by you to perpetuate the location of this point.

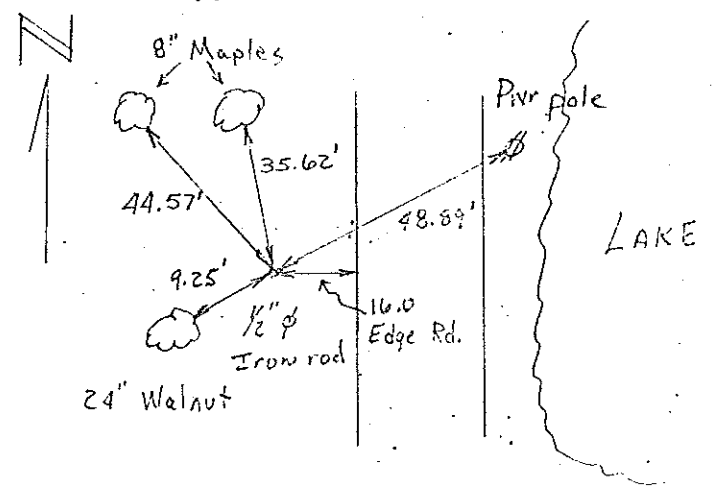
*Found corner and retied as in sketch at right.*

D. BUSS  
J. DEENY  
D. ANDERSON

Date of Field Work 8/29/75

Signed David Buss.  
WHS & Co.

4. Sketch showing relative location of monument and reference points. Show supporting and/or contradictory evidence where applicable.



All ties "X" Nails