

2002 AUG 9 AM 8 57

CINDY MESSERSMITH  
 COUNTY RECORDER

TeKIPPE ENGINEERING, P.C., 128 South Vine Street, West Union, Iowa 52176 Phone (563) 422-6131

UNITED STATES PUBLIC LAND SURVEY CORNER CERTIFICATE

OF

Land Survey Monuments situated in Section 18, Township 94 North, Range 14 West of the Fifth Principal Meridian, CHICKASAW County, Iowa.

Previously recorded in none in County Recorder's Office.  
 (book, page, document number, etc.)

(Show reason for preparing this certificate, the evidence and detailed procedures used in establishing the corner positions and monumentation found or placed.)

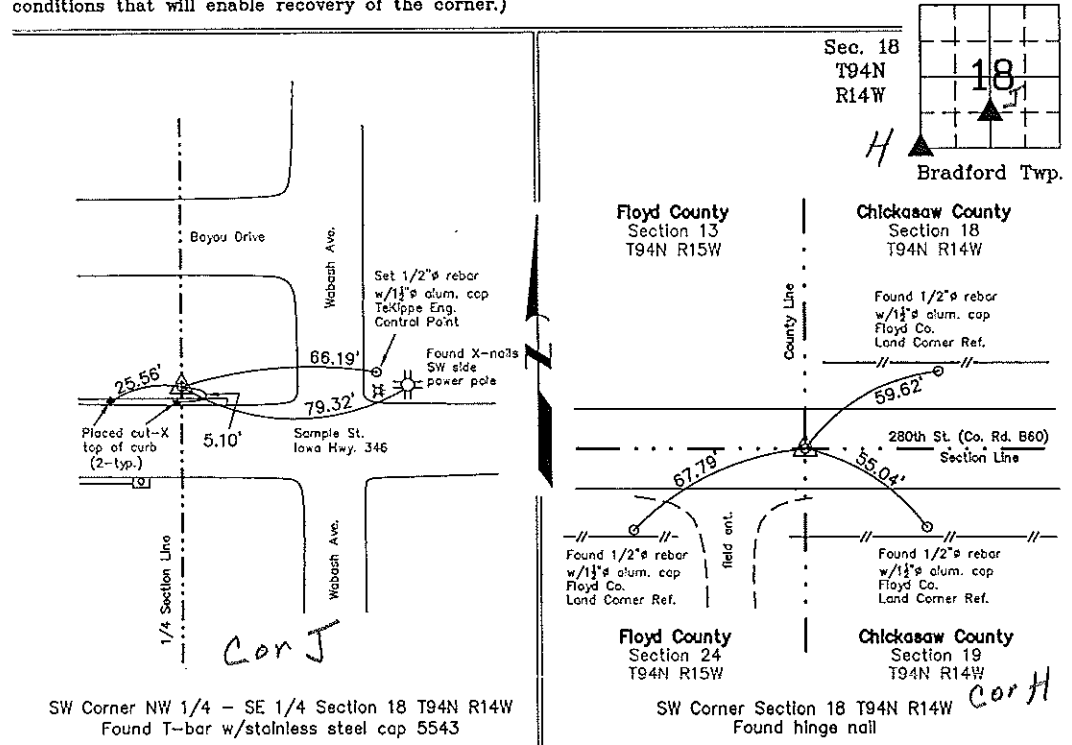
Monument Description and Remarks: **SW Corner NW 1/4 - SE 1/4 Section 18 T94N R14W:**  
 Found T-bar with stainless steel cap 5543 with information obtained from the Chickasaw County Engineer's Office in Field Book Bradford Twp. Corner Ties, Section 18, Corner 'A1'.

**SW Corner Section 18 T94N R14W:** Found hinge nail with information obtained from the Chickasaw County Engineer's Office in Field Book Bradford Twp. Corner Ties, Section 18, Corner 'H'.

PLAN - VIEW

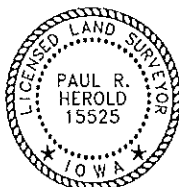
Project Number 02170.LS  
 FB. Nahsua 1 PG. 1-3

(Show a minimum of three reference ties to durable physical objects, relevant monuments and physical conditions that will enable recovery of the corner.)



SW Corner NW 1/4 - SE 1/4 Section 18 T94N R14W  
 Found T-bar w/stainless steel cap 5543

SW Corner Section 18 T94N R14W  
 Found hinge nail



I hereby certify that this land surveying document was prepared and the related survey work was performed by me or under my direct personal supervision and that I am a duly licensed Land Surveyor under the laws of the State of Iowa.

*Paul R. Herold* 8-8-02  
 Paul R. Herold Date  
 License number 15525  
 My license renewal date is December 31, 2002.  
 Sheets covered by this seal: Individual

List Corners to be Indexed			
Corners	Section	Twp.	Range
SW-NW-SE	18	94N	14W
SW	18	94N	14W

Filed 8-13-02

X:\Section Corners\Sec. 18\18-94-14ru.dwg

*Chickasaw* COUNTY  
LAND SURVEY MONUMENT RECORD

Sec 18 T 94 N R 14 W

*Cor #11J*

All items to be completed. Please print or type.

1. Type of Monument  
(check one).

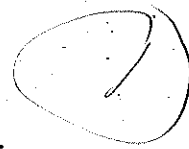
Section Corner       Bench Mark

Quarter Corner       Other \_\_\_\_\_

NW cor SW SE

2. Description of Evidence found and location. NW cor SW 1/4 SE 1/4

*Set at mid point between  
Center of Section 18 and 5 1/4 cor  
Sec. 18*

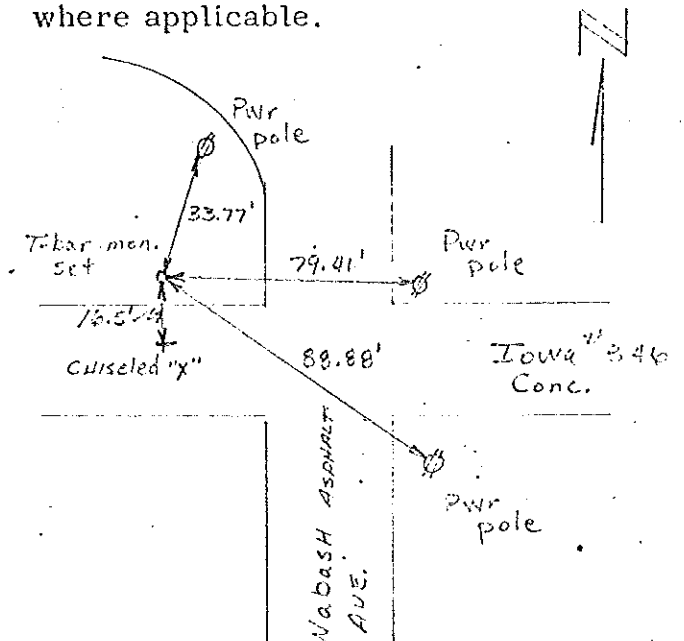


3. Description of monument and/or accessories established by you to perpetuate the location of this point.

*Set T-bar mon and tied as  
shown in sketch at right.*

*D. BUSS  
J. DEENY  
D. ANDERSON*

4. Sketch showing relative location of monument and reference points. Show supporting and/or contradictory evidence where applicable.



Date of Field Work 9/30/95

Signed David Buss  
WHS & Co.