

UNITED STATES PUBLIC LAND SURVEY CORNER CERTIFICATE

OF

Land Survey Monuments situated in Section 7, Township 94 North, Range 14 West, of the Fifth Principal Meridian, CHICKASAW County, Iowa. Previously recorded in Deed Book 158, Page 122 in County Recorder's Office. (book, page, document number, etc.)

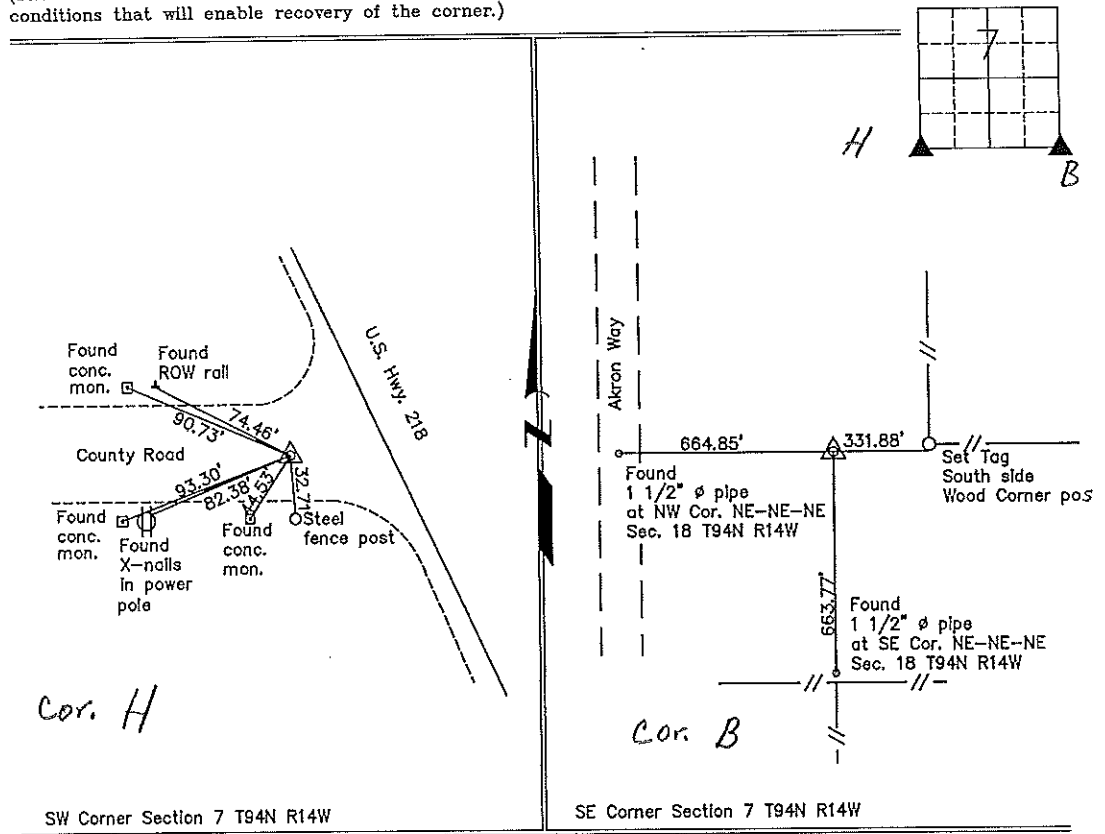
(Show reason for preparing this certificate, the evidence and detailed procedures used in establishing the corner positions and monumentation found or placed.)

Monument Description and Remarks: SW Corner Section 7 T94N R7W: Found iron pipe over iron pin. The previous Section Corner Certificate has ties to a 60d nail that was set over this corner. The nail is now gone and the pipe is used as the corner.

SE Corner Section 7 T94N R7W: Found 1 1/2" ϕ pipe, from surveys of record. The previous Section Corner Certificate incorrectly tied out a 1/4 - 1/4 corner in Section 18 T94N R14W (tie to South for SE corner this certificate).

PLAN - VIEW

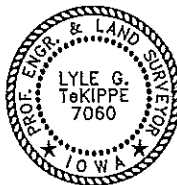
(Show a minimum of three reference ties to durable physical objects, relevant monuments and physical conditions that will enable recovery of the corner.)



SW Corner Section 7 T94N R14W

SE Corner Section 7 T94N R14W

I hereby certify that this land surveying document was prepared and the related survey work was performed by me or under my direct personal supervision and that I am a duly licensed Land Surveyor under the laws of the State of Iowa.



Lyle G. TeKippe 3-6-58
 Lyle G. TeKippe Date
 License number 7060
 My license renewal date is December 31, 1998.
 Sheets covered by this seal: Individual

List Corners to be Indexed			
Corners	Section	Twp.	Range
SW	7	94N	14W
Cor. A	7	94N	14W
SE	7	94N	14W

Cor. B - 7-94-14
Placed in Tie Book
3/23/98

UNITED STATES PUBLIC LAND SURVEY CORNER CERTIFICATE

OF

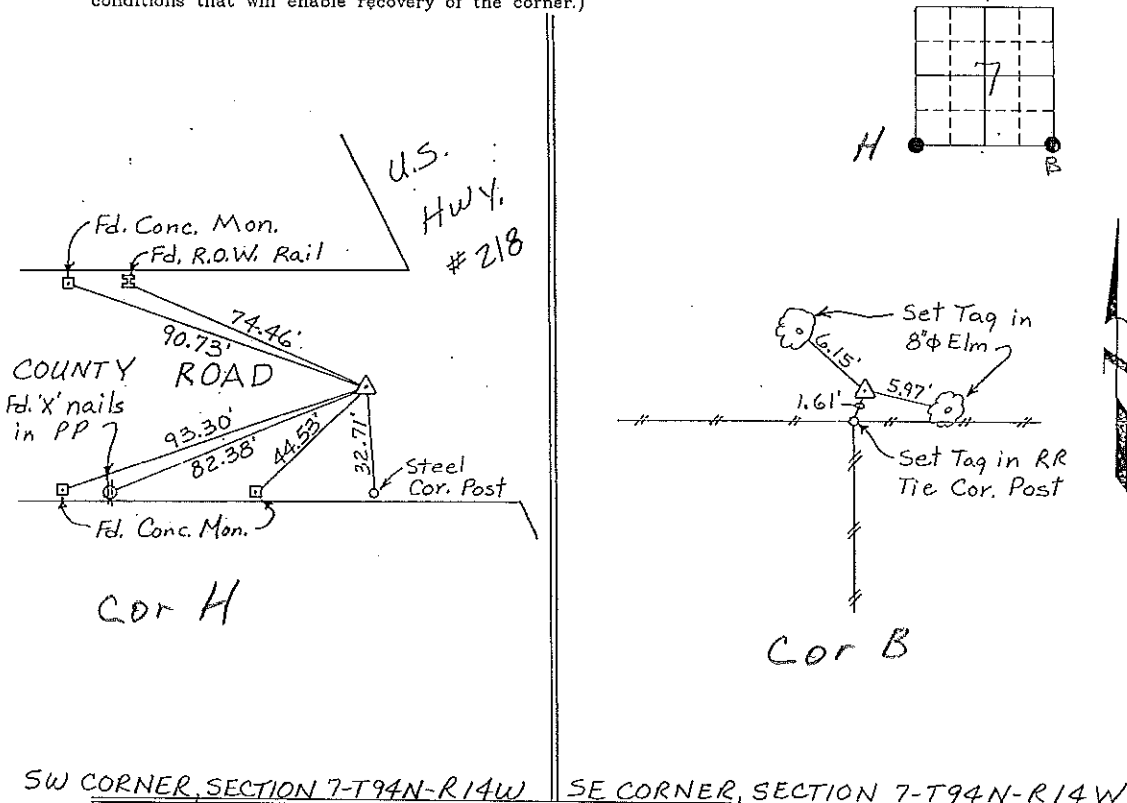
Land Survey Monuments situated in Section 7, Township 94 North, Range 14 West, of the Fifth Principal Meridian, CHICKASAW County, Iowa. Previously recorded in NONE in County Recorder's Office.
(book, page, document number, etc.)

(Show reason for preparing this certificate, the evidence and detailed procedures used in establishing the corner positions and monumentation found or placed.)

Monument Description and Remarks: SW CORNER, SECTION 7-T94N-R14W: Found 60^d Nail.
SE CORNER, SECTION 7-T94N-R14W: Found 1" Gas Pipe.

PLAN - VIEW

(Show a minimum of three reference ties to durable physical objects, relevant monuments and physical conditions that will enable recovery of the corner.)

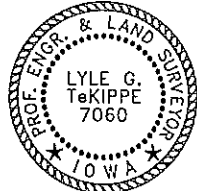


SW CORNER, SECTION 7-T94N-R14W SE CORNER, SECTION 7-T94N-R14W

I hereby certify that the survey work was completed and this certificate was prepared by me or under my direct personal supervision and that I am a duly registered land surveyor under the laws of the state of Iowa.

Signature: Lyle G. TeKippe
 Lyle G. TeKippe
 Date: 6-20-95 Reg. No. 7060
 My Registration Renewal Date is December 31, 1996

Seal



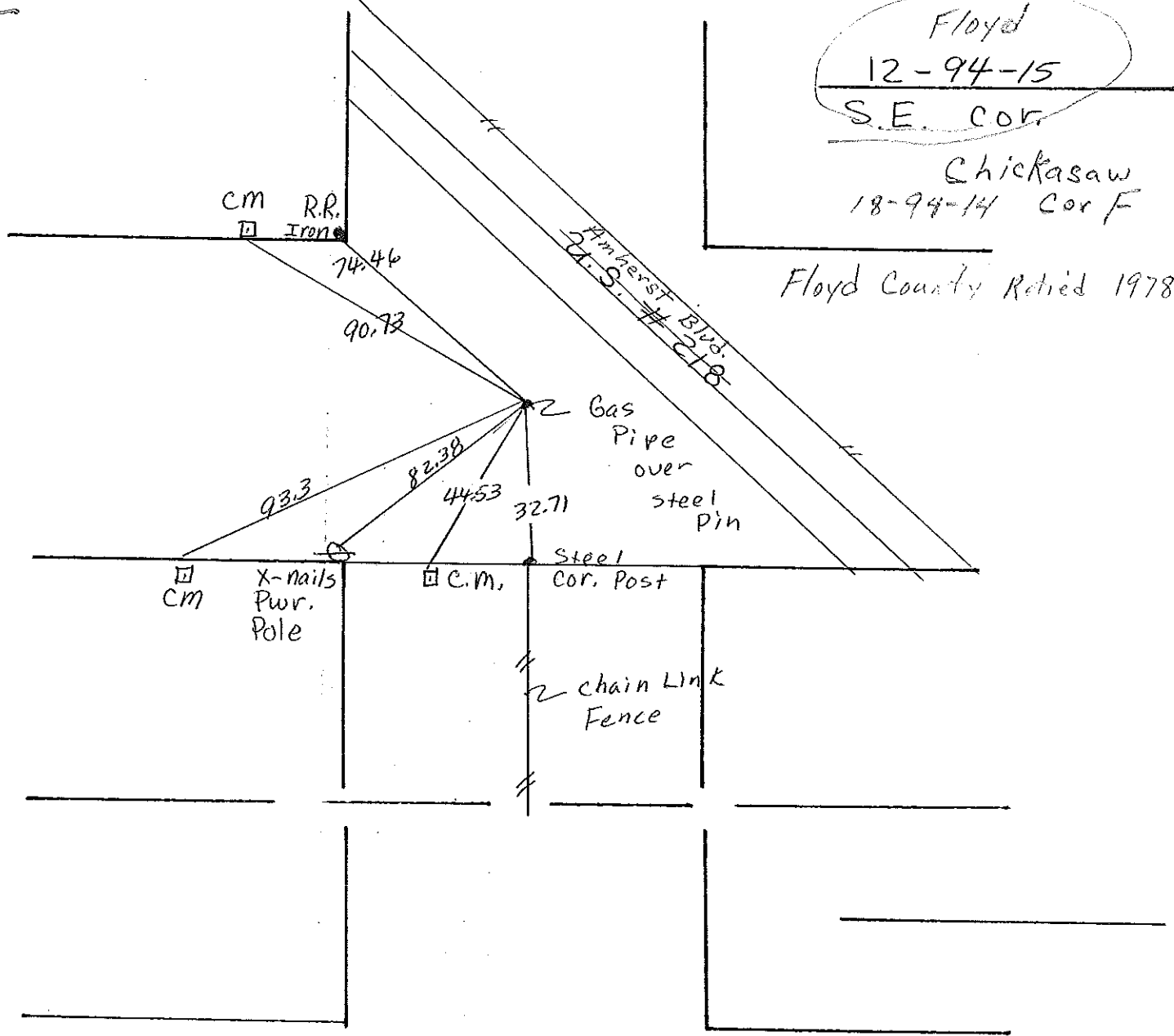
List Corners to be Indexed			
Corners	Section	Twp.	Range
SW Cor H	7	94N	14W
SE Cor B	7	94N	14W

Placed in tie Box 6/23/95

Floyd
 12-94-15
 S.E. cor.

Chickasaw
 18-94-14 cor F

Floyd County Retired 1978



- ▣ Concrete Monument
- Steel Pin or Gas Pipe
- cor Post
- ∅ Power Pole

Chickasaw COUNTY
LAND SURVEY MONUMENT RECORD

Sec 18^X T 94 N R 14 W

All items to be completed. Please print or type.

1. Type of Monument
(check one).

- Section Corner Bench Mark
 Quarter Corner Other _____

2. Description of Evidence found and location. NW cor Cor F

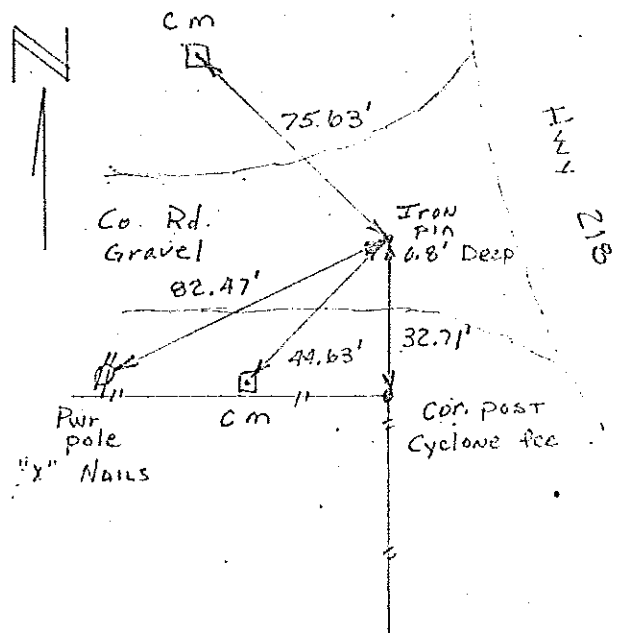


3. Description of monument and/or accessories established by you to perpetuate the location of this point.

Found corner and retied
as in sketch at right.

D. BUSS
J. DEENY
D. ANDERSON

4. Sketch showing relative location of monument and reference points. Show supporting and/or contradictory evidence where applicable.



Date of Field Work 8/29/75

Signed David Buss
WHKS & Co.