

Prepared by & Return to: Herold - Reicks Surveying, 10 East Main Street, New Hampton, IA 50659, Ph. 641-394-2726

UNITED STATES PUBLIC LAND SURVEY CORNER CERTIFICATE

Land Survey Monuments situated in Section **18**, Township **94** North, Range **14** West of the Fifth Principal Meridian, **Chickasaw** County, Iowa. Not previously recorded in the County Recorder's office.

This certificate is being prepared in compliance with Iowa Code Chapter 355.11 because:

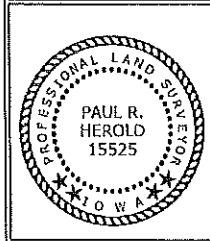
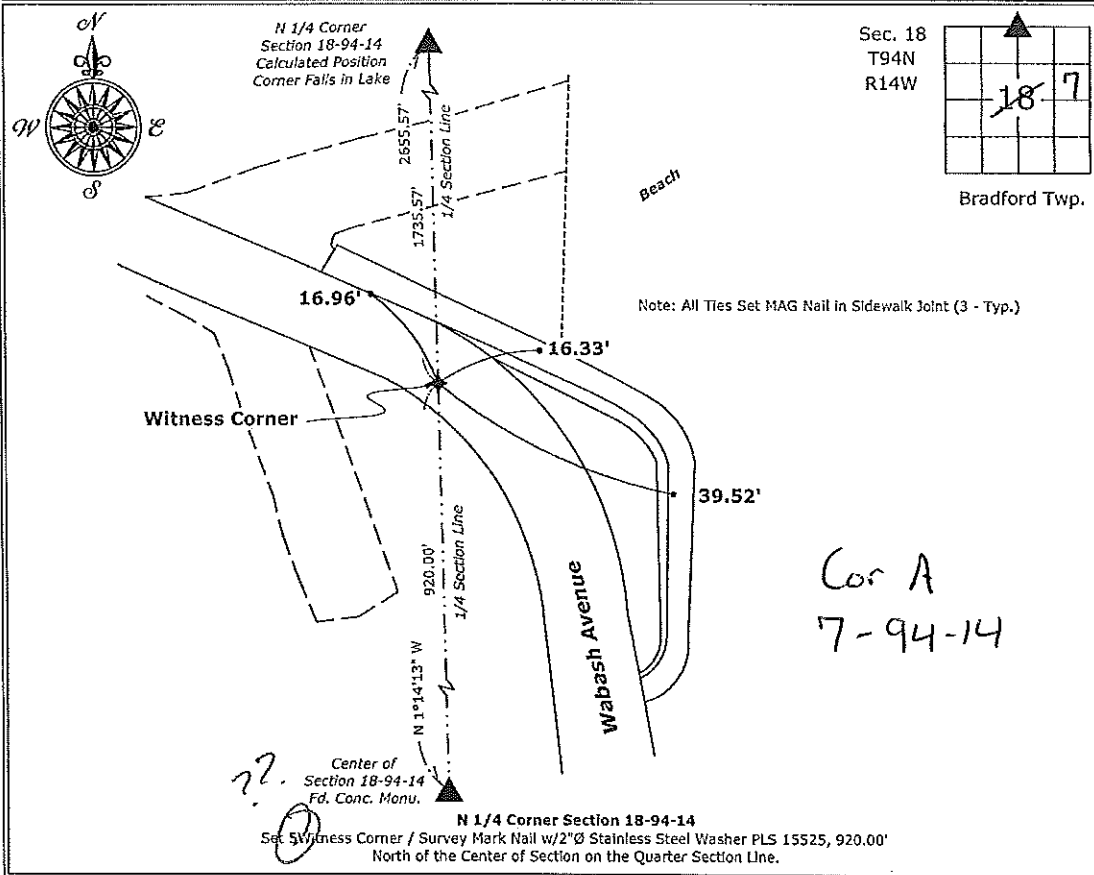
- There is no certificate on file for this corner.
- There are no longer three valid ties of record.
- There are changes to reference ties of record.
- There is change of monumentation of record.
- To clarify description of record monument (ties).

Monument Description and Remarks:

N 1/4 Corner Corner: Corner Falls in Lake, Set Survey Mark Nail w/2"Ø Stainless Steel Washer PLS 15525 920.00' North of the Center of Section on the Quarter Section Line.

PLAN - VIEW

(Show a minimum of three reference ties to durable physical objects, relevant monuments and physical conditions that will enable recovery of the corner.)



I hereby certify that this land surveying document was prepared and the related survey work was performed by me or under my direct personal supervision and that I am a duly licensed Land Surveyor under the laws of the State of Iowa.

Paul R. Herold 10-9-15
 Paul R. Herold Date:
 License number 15525
 My license renewal date is December 31, 2016.
 Sheets covered by this seal: Individual sheet only

List Corners to be Indexed			
Corners	Section	Twp.	Range
N 1/4	18	94	14
Project Number: 2015-136			
FB: Nashua 1, Pgs. 22-23			