

UNITED STATES PUBLIC LAND SURVEY CORNER CERTIFICATE

OF

Land Survey Monuments situated in Section 7, Township 94 North, Range 14 West, of the Fifth Principal Meridian, CHICKASAW County, Iowa. Previously recorded in Deed Book 158, Page 122 in County Recorder's Office. (book, page, document number, etc.)

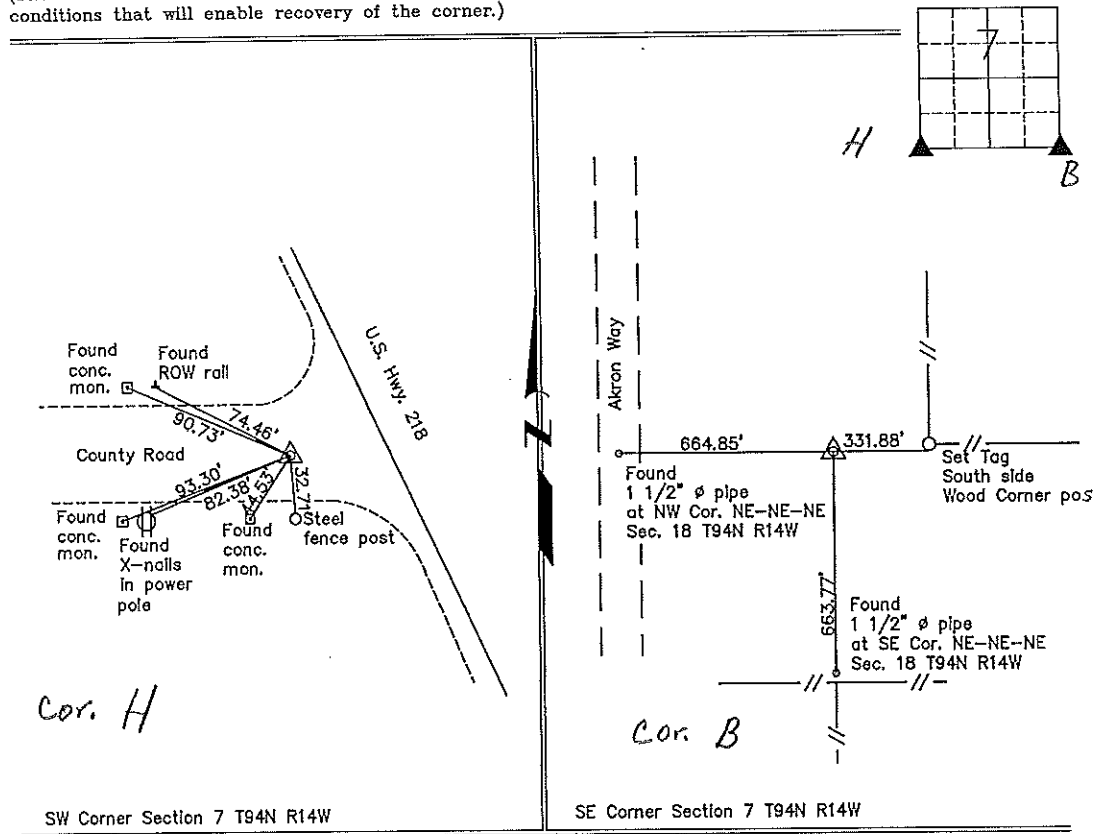
(Show reason for preparing this certificate, the evidence and detailed procedures used in establishing the corner positions and monumentation found or placed.)

Monument Description and Remarks: SW Corner Section 7 T94N R7W: Found iron pipe over iron pin. The previous Section Corner Certificate has ties to a 60d nail that was set over this corner. The nail is now gone and the pipe is used as the corner.

SE Corner Section 7 T94N R7W: Found 1 1/2" ø pipe, from surveys of record. The previous Section Corner Certificate incorrectly tied out a 1/4 - 1/4 corner in Section 18 T94N R14W (tie to South for SE corner this certificate).

PLAN - VIEW

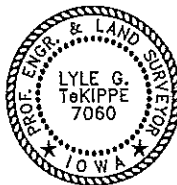
(Show a minimum of three reference ties to durable physical objects, relevant monuments and physical conditions that will enable recovery of the corner.)



SW Corner Section 7 T94N R14W

SE Corner Section 7 T94N R14W

I hereby certify that this land surveying document was prepared and the related survey work was performed by me or under my direct personal supervision and that I am a duly licensed Land Surveyor under the laws of the State of Iowa.



Lyle G. TeKippe 3-6-58
 Lyle G. TeKippe Date
 License number 7060
 My license renewal date is December 31, 1998.
 Sheets covered by this seal: Individual

List Corners to be Indexed			
Corners	Section	Twp.	Range
SW	7	94N	14W
Cor. H	7	94N	14W
SE	7	94N	14W

Cor. B - 7-94-14
Placed in Tie Book
3/23/98

Section 7-94-14
As referred to in
Engr. Tie Book

TeKIPPE ENGINEERING, P.C., 128 South Vine Street, West Union, Iowa 52175 Phone (319) 422-5131

UNITED STATES PUBLIC LAND SURVEY CORNER CERTIFICATE

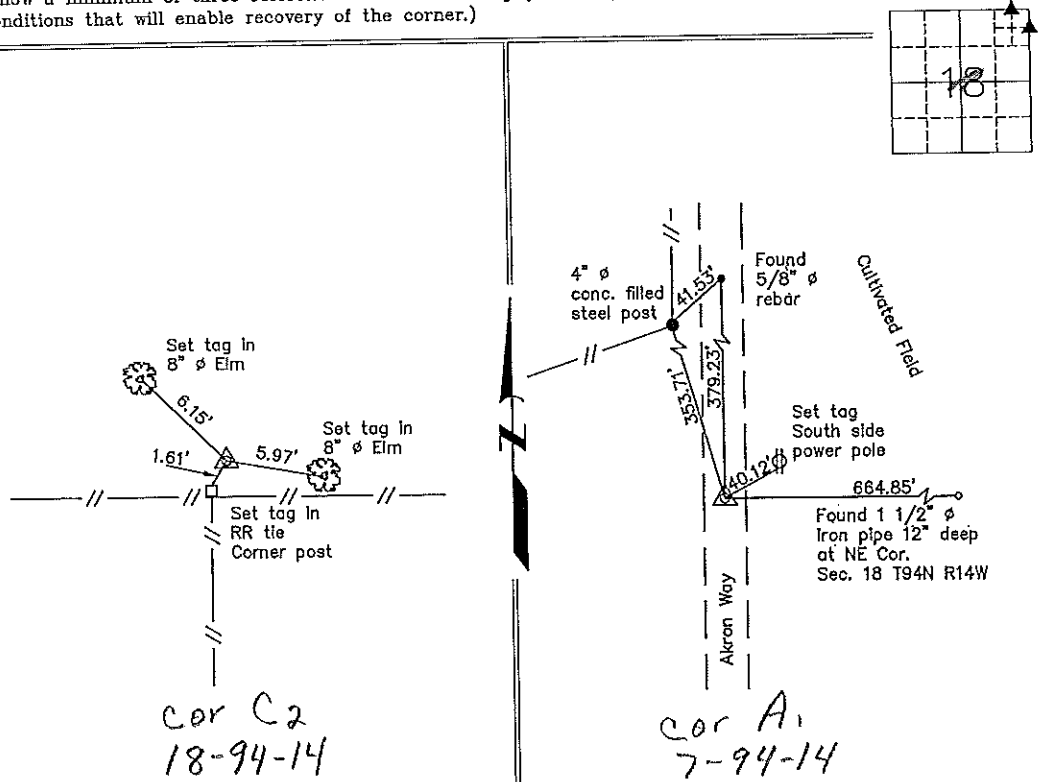
OF
Land Survey Monuments situated in Section 18⁷, Township 94 North, Range 14 West, of the Fifth Principal Meridian, CHICKASAW County, Iowa.
Previously recorded in none in County Recorder's Office.
(book, page, document number, etc.)

(Show reason for preparing this certificate, the evidence and detailed procedures used in establishing the corner positions and monumentation found or placed.)

Monument Description and Remarks: Note: These two corners are Quarter-Quarter-Quarter Section corners. Iowa Code does not require this Section Corner Certificate. However, in order to find the NE Corner of Section 18 T94N R14W (falls in cultivated field, 12" deep) it is imperative to have these corners. They were found from surveys of record; both corners are 1 1/2" ø pipes.

PLAN - VIEW

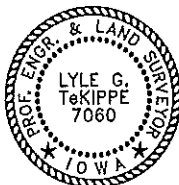
(Show a minimum of three reference ties to durable physical objects, relevant monuments and physical conditions that will enable recovery of the corner.)



SE Corner NE1/4-NE1/4-NE1/4 Section 18 T94N R14W

NW Corner NE1/4-NE1/4-NE1/4 Section 18 T94N R14W

I hereby certify that this land surveying document was prepared and the related survey work was performed by me or under my direct personal supervision and that I am a duly licensed Land Surveyor under the laws of the State of Iowa.



Lyle G. Tekippe 3-6-98
Lyle G. Tekippe Date
License number 7060
My license renewal date is December 31, 1998.
Sheets covered by this seal: Individual

List Corners to be Indexed

Corners	Section	Twp.	Range
SE-NE-NE-NE	18	94N	C2 14W
SE-NE-NE-NE	18	94N	C2 14W
NW-NE-NE-NE	18	94N	14W

Cor A1 7-94-14
Placed in tie book 3/25/9.

UNITED STATES PUBLIC LAND SURVEY CORNER CERTIFICATE

OF

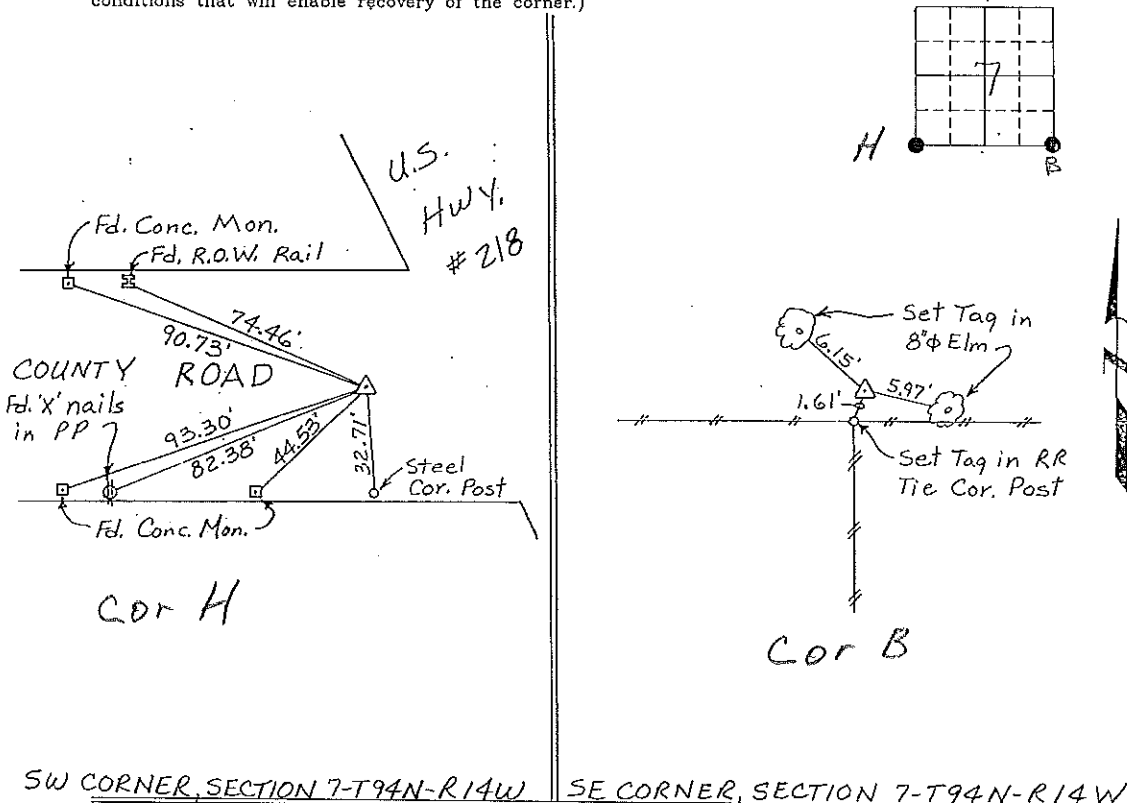
Land Survey Monuments situated in Section 7, Township 94 North, Range 14 West, of the Fifth Principal Meridian, CHICKASAW County, Iowa. Previously recorded in NONE in County Recorder's Office.
(book, page, document number, etc.)

(Show reason for preparing this certificate, the evidence and detailed procedures used in establishing the corner positions and monumentation found or placed.)

Monument Description and Remarks: SW CORNER, SECTION 7-T94N-R14W: Found 60^d Nail.
SE CORNER, SECTION 7-T94N-R14W: Found 1" Gas Pipe.

PLAN - VIEW

(Show a minimum of three reference ties to durable physical objects, relevant monuments and physical conditions that will enable recovery of the corner.)

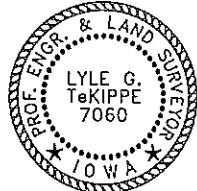


SW CORNER, SECTION 7-T94N-R14W SE CORNER, SECTION 7-T94N-R14W

I hereby certify that the survey work was completed and this certificate was prepared by me or under my direct personal supervision and that I am a duly registered land surveyor under the laws of the state of Iowa.

Signature: Lyle G. TeKippe
 Lyle G. TeKippe
 Date: 6-20-95 Reg. No. 7060
 My Registration Renewal Date is December 31, 1996

Seal



List Corners to be Indexed			
Corners	Section	Twp.	Range
SW Cor H	7-94-14	94N	14W
SE Cor B	7-94-14	94N	14W

Placed in tie Box 6/23/95