

UNITED STATES PUBLIC LAND SURVEY CORNER CERTIFICATE

OF

Land Survey Monuments situated in Section 18, Township 94 North, Range 14 West, of the Fifth Principal Meridian, CHICKASAW County, Iowa.

Previously recorded in none in County Recorder's Office.
(book, page, document number, etc.)

(Show reason for preparing this certificate, the evidence and detailed procedures used in establishing the corner positions and monumentation found or placed.)

Monument Description and Remarks:

SW Corner NE 1/4-NE 1/4 Section 18 T94N R14W: Set 1/2"Ø rebar with 2"Ø aluminum cap LS 7060 at the intersection of 1/4-1/4 section lines based on the standard mathematical subdivision of Section 18.

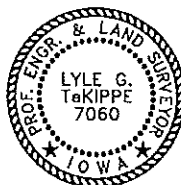
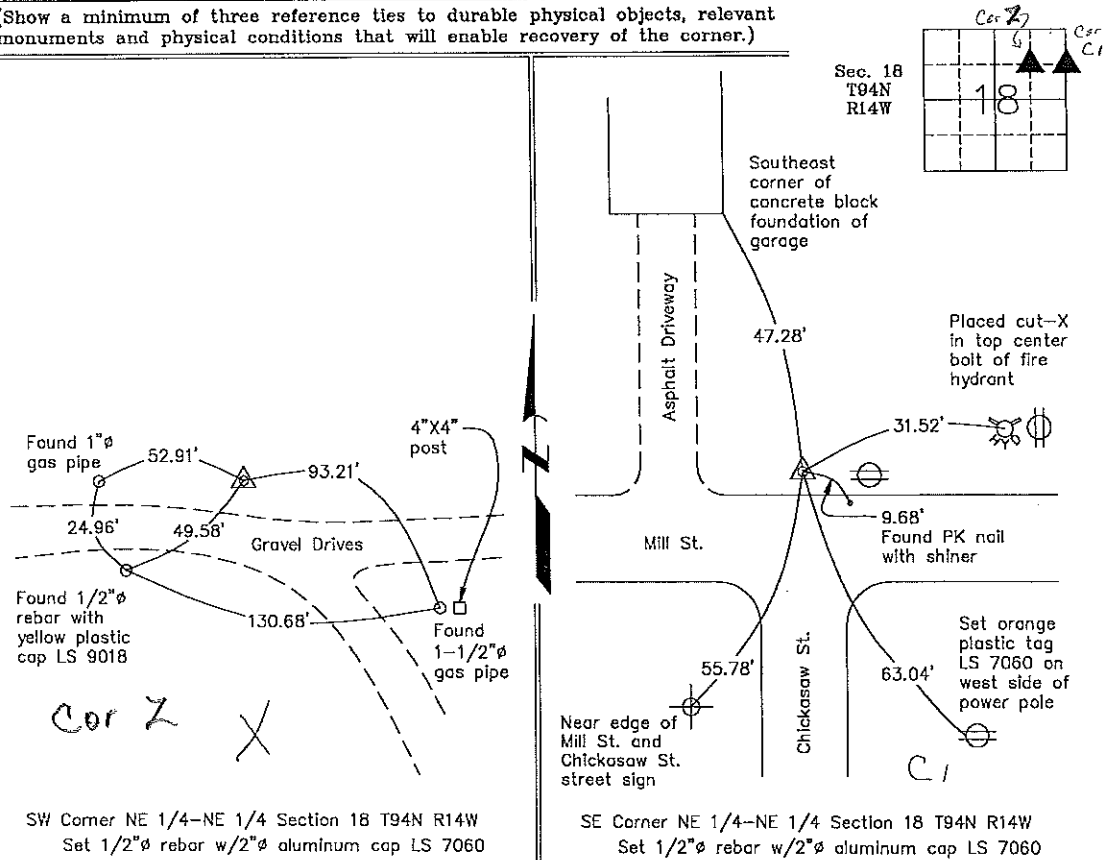
SE Corner NE 1/4-NE 1/4 Section 18 T94N R14W: Set 1/2"Ø rebar with 2"Ø aluminum cap LS 7060 equidistant and on line between the NE Corner and the E 1/4 Corner of Section 18.

Project No. 99117.LS

PLAN - VIEW

Field Book 46G, pages 9-11

(Show a minimum of three reference ties to durable physical objects, relevant monuments and physical conditions that will enable recovery of the corner.)



I hereby certify that this land surveying document was prepared and the related survey work was performed by me or under my direct personal supervision and that I am a duly licensed Land Surveyor under the laws of the State of Iowa.

Lyle G. TeKippe 7-14-99
Lyle G. TeKippe Date
License number 7060
My license renewal date is December 31, 2000.
Sheets covered by this seal: Individual

List Corners to be Indexed

Corners	Section	Twp.	Range
SW-NE-NE	18	94N	14W
SE-NE-NE	18	94N	14N

Corner C1 18-94-14
Corner Z 18-94-14
Placed in tie book
7-15-99