

# UNITED STATES PUBLIC LAND SURVEY CORNER CERTIFICATE

OF

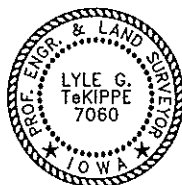
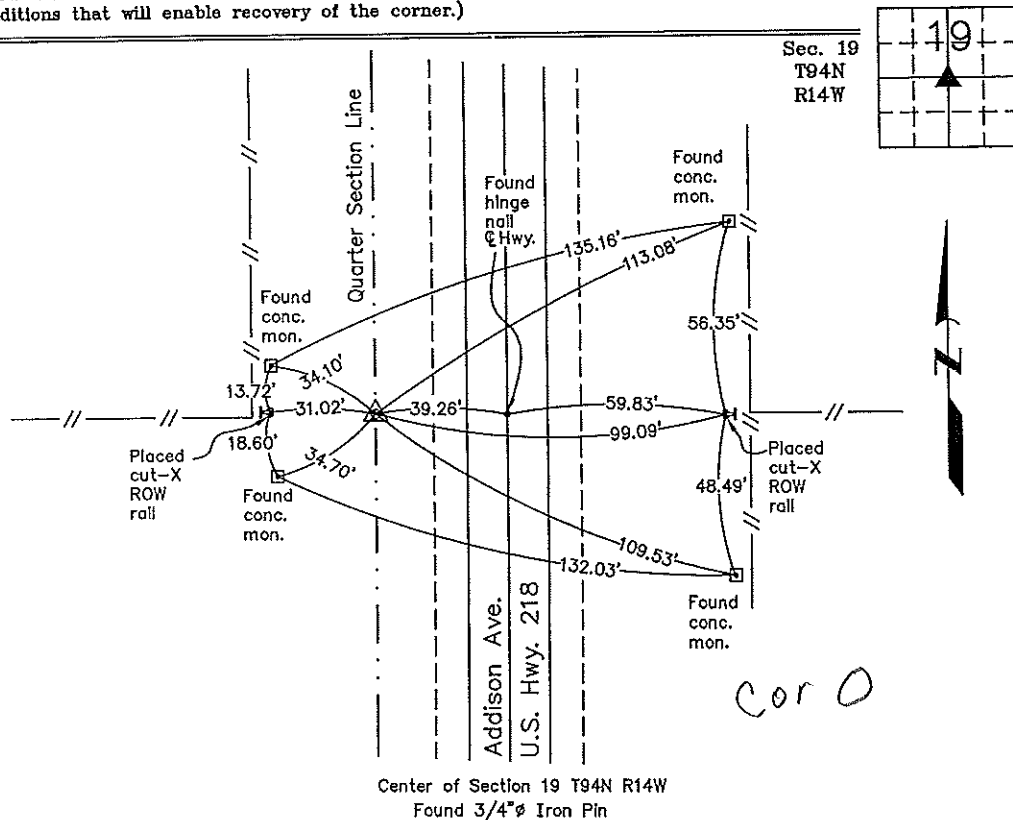
Land Survey Monuments situated in Section 19, Township 94 North, Range 14 West, of the Fifth Principal Meridian, CHICKASAW County, Iowa.  
Previously recorded in none in County Recorder's Office.  
(book, page, document number, etc.)

(Show reason for preparing this certificate, the evidence and detailed procedures used in establishing the corner positions and monumentation found or placed.)

Monument Description and Remarks: Center of Section 19 T94N R14W: Found 3/4"φ iron pin with information obtained from Iowa Department of Transportation as-built plans for U.S. Hwy. 218 Project #F 76 (1).

## PLAN - VIEW

(Show a minimum of three reference ties to durable physical objects, relevant monuments and physical conditions that will enable recovery of the corner.)



I hereby certify that this land surveying document was prepared and the related survey work was performed by me or under my direct personal supervision and that I am a duly licensed Land Surveyor under the laws of the State of Iowa.

*Lyle G. Tekippe* 5-21-99  
Lyle G. Tekippe Date  
License number 7060  
My license renewal date is December 31, 2000.  
Sheets covered by this seal: Individual

Corners	Section	Twp.	Range
Center	19	94N	14W

Corner O-19-94-14

*Area in this block shown*

171-457

County Engineer's Copy