

UNITED STATES PUBLIC LAND SURVEY CORNER CERTIFICATE

OF

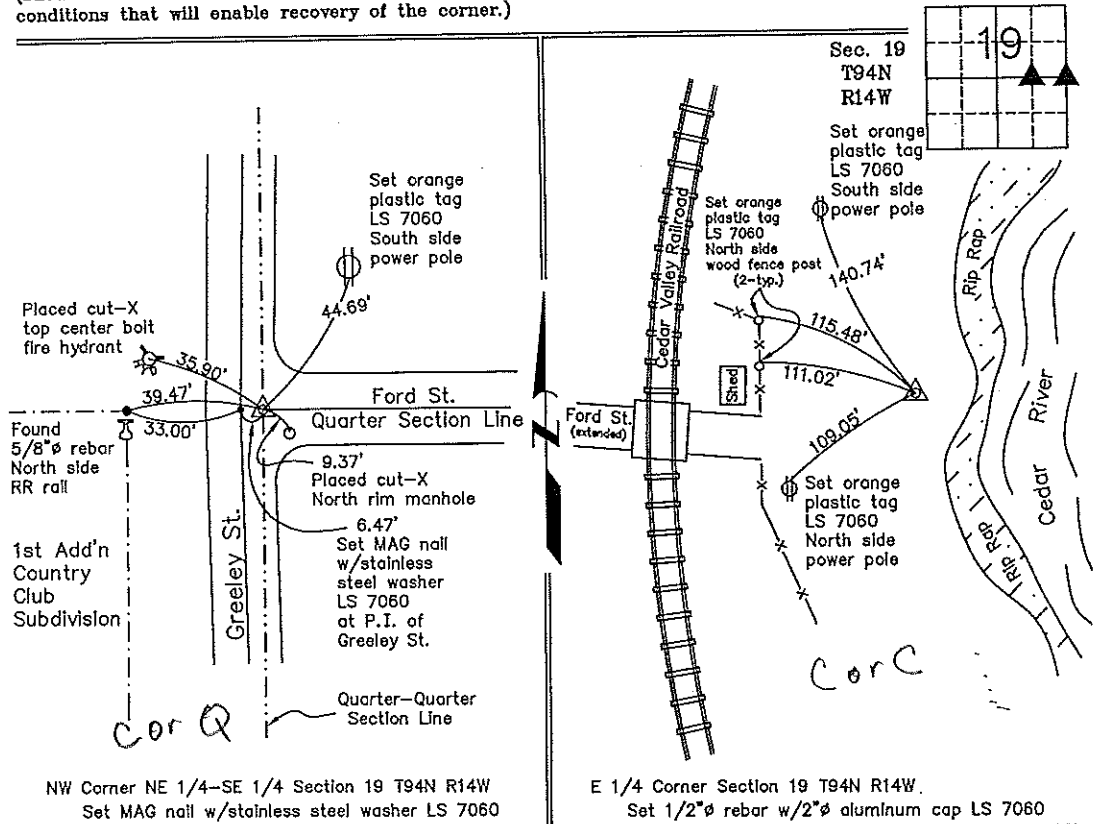
Land Survey Monuments situated in Section 19, Township 94 North, Range 14 West, of the Fifth Principal Meridian, CHICKASAW County, Iowa. Previously recorded in none in County Recorder's Office. (book, page, document number, etc.)

(Show reason for preparing this certificate, the evidence and detailed procedures used in establishing the corner positions and monumentation found or placed.)

Monument Description and Remarks: NW Corner NE 1/4-SE 1/4 Section 19 T94N R14W: Set MAG nail w/stainless steel washer LS 7060 by extending a back tangent (quarter-quarter section line) forward to a line extended from the Center of the Section through the NE Corner of the First Addition to the Country Club Subdivision.
E 1/4 Corner Section 19 T94N R14W: Set 1/2" x 4' rebar w/2" aluminum cap LS 7060 by doubling the distance from the Center of the Section to and across the NW Corner NE 1/4-SE 1/4 of Section 19.

PLAN - VIEW

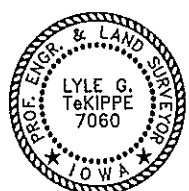
(Show a minimum of three reference ties to durable physical objects, relevant monuments and physical conditions that will enable recovery of the corner.)



NW Corner NE 1/4-SE 1/4 Section 19 T94N R14W
Set MAG nail w/stainless steel washer LS 7060

E 1/4 Corner Section 19 T94N R14W.
Set 1/2" x 4' rebar w/2" aluminum cap LS 7060

I hereby certify that this land surveying document was prepared and the related survey work was performed by me or under my direct personal supervision and that I am a duly licensed Land Surveyor under the laws of the State of Iowa.



Lyle G. TeKippe 5-21-99
Lyle G. TeKippe Date
License number 7060
My license renewal date is December 31, 2000.
Sheets covered by this seal: Individual

List Corners to be Indexed			
Corners	Section	Twp.	Range
NW-NE-SE	19	94N	14W
E 1/4	19	94N	14W

Corner Q 19-94-14
Corner C 19-94-14
Placed in Tie Book 5/9