

Prepared by & Return to: Herold - Reicks Surveying, 10 East Main Street, New Hampton, IA 50659, Ph. 641-394-2725

United States Public Land Survey Corner Certificate

Land Survey Monument situated in
Section ¹³18, Township 94 North, Range 13 West of the Fifth Principal Meridian, Chickasaw County, Iowa.
Not on file in the County Recorder's office.

This certificate is being prepared in compliance with Iowa Code Chapter 355.11 because:

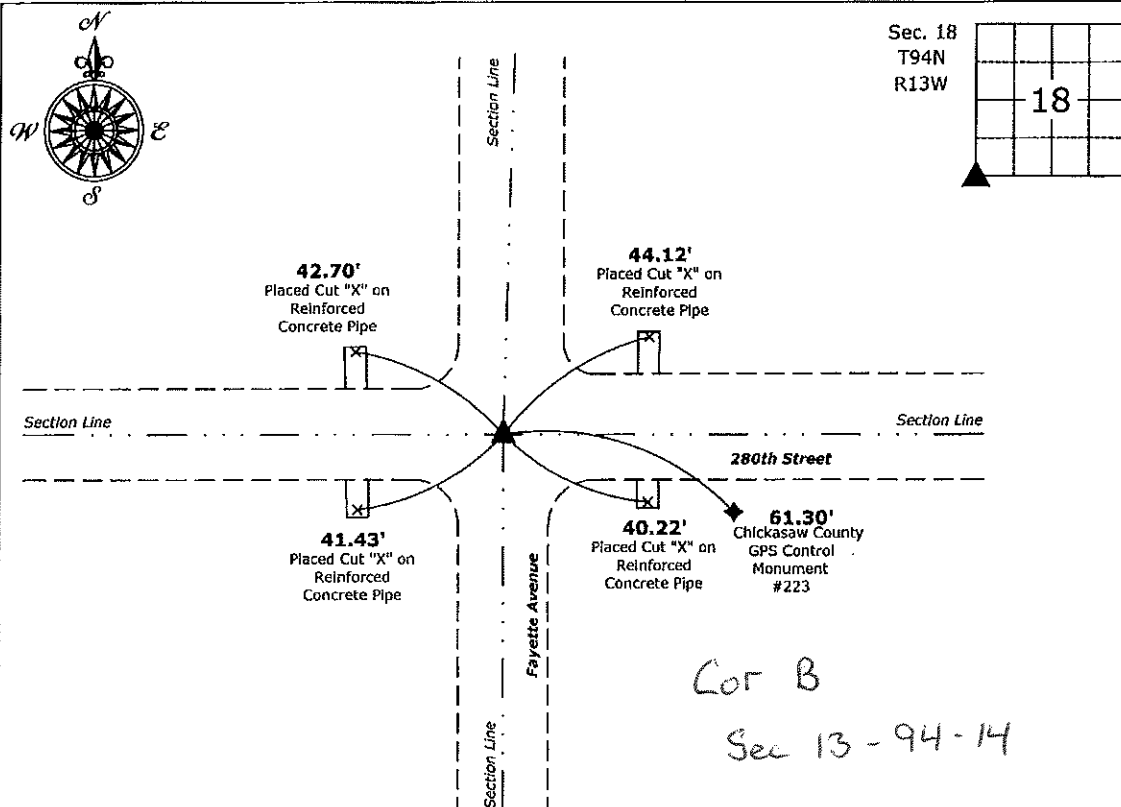
- ☒ There is no certificate on file for this corner.
- ☐ There are no longer three valid ties of record.
- ☐ There are changes to reference ties of record.
- ☐ There is change of monumentation of record.
- ☐ To clarify description of record monument (ties).

Monument Description and Remarks:

SW Corner: Found 5/8"Ø Rebar 18" Deep, Set 5/8"Ø rebar w/2"Ø Alum. Cap PLS 15525 over in order to perpetuate the monument, Corner recovered with information obtained from the County Engineer's Office in Field Book, Bradford Township, Section 13, Corner "B"

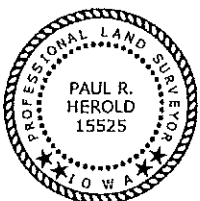
Plan View

(Show a minimum of three reference ties to durable physical objects, relevant monuments and physical conditions that will enable recovery of the corner.)



SW Corner of Section 18-94-13

Fd. 5/8"Ø Rebar 18" Deep, Set 5/8"Ø rebar w/2"Ø aluminum cap PLS 15525 Over Found Monument



I hereby certify that this land surveying document was prepared and the related survey work was performed by me or under my direct personal supervision and that I am a duly licensed Land Surveyor under the laws of the State of Iowa.

Paul R. Herold 4-24-17

Paul R. Herold

Date:

License number 15525

My license renewal date is December 31, 2018.

Sheets covered by this seal: Individual sheet only

List Corner to be Indexed

Corner	Section	Twp.	Range
SW	18	94	13

Project Number: 2017-042

FB: Chickasaw County 6, Pgs. 41-42

Prepared by & Return to: Herold - Reicks Surveying, 10 East Main Street, New Hampton, IA 50659, Ph. 641-394-2725

United States Public Land Survey Corner Certificate

Land Survey Monument situated in
Section 18, Township 94 North, Range 14 West of the Fifth Principal Meridian, **Chickasaw** County, Iowa.
Not on file in the County Recorder's office.

This certificate is being prepared in compliance with Iowa Code Chapter 355.11 because:

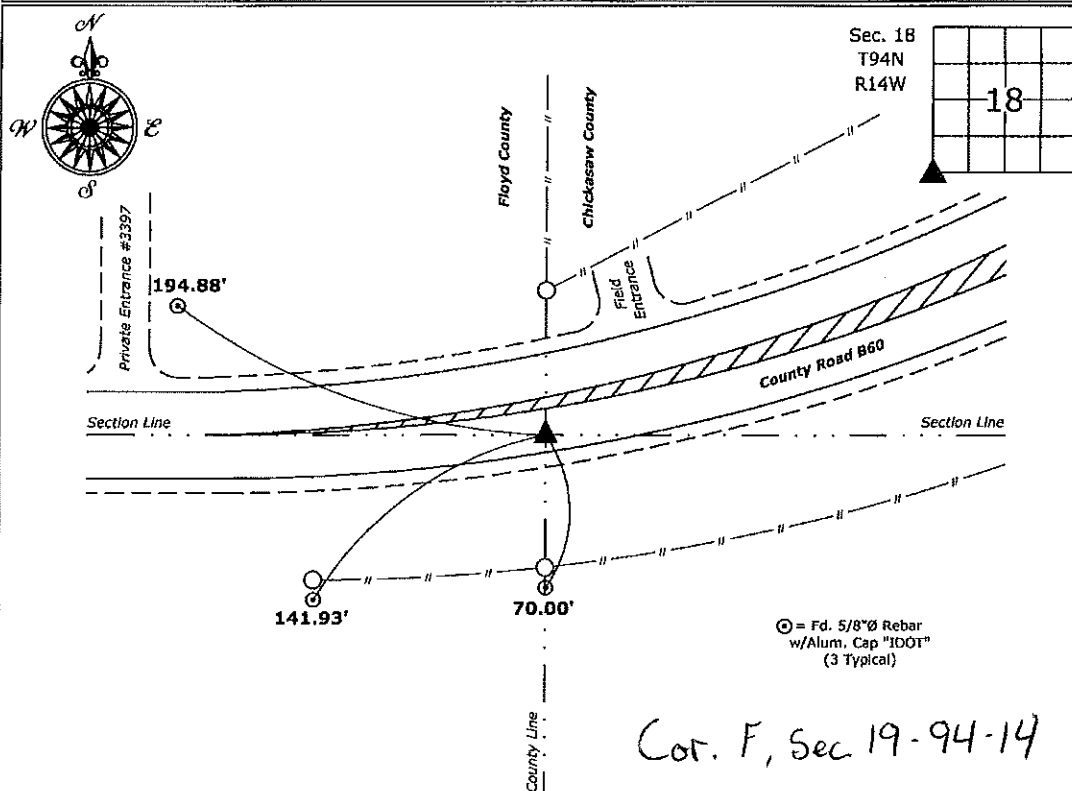
- ☒ There is no certificate on file for this corner.
☐ There are no longer three valid ties of record.
☐ There are changes to reference ties of record.
☐ There is change of monumentation of record.
☐ To clarify description of record monument (ties).

Monument Description and Remarks:

Southwest Corner: Fd. Survey Mark Nail w/Stainless Steel Washer "IDOT" with information obtained from Iowa DOT Highway Plans Project No. NHSN-218-9(94)--2R-19.

Plan View

(Show a minimum of three reference ties to durable physical objects, relevant monuments and physical conditions that will enable recovery of the corner.)



Southwest Corner of Section 18-94-14
Fd. Survey Mark Nail w/Stainless Steel Washer "IDOT"



I hereby certify that this land surveying document was prepared and the related survey work was performed by me or under my direct personal supervision and that I am a duly licensed Land Surveyor under the laws of the State of Iowa.
Kirk D. Reicks 12-30-16
Kirk D. Reicks Date:
License number 19211
My license renewal date is December 31, 2018.
Sheets covered by this seal: Individual sheet only

List Corner to be Indexed

Corner	Section	Twp.	Range
SW	18	94	14

Project Number: 2016-142

FB: Nashua 1, Pg. 26

FILED 2002-1930
RECORDER'S OFFICE
CHICKASAW COUNTY, IOWA

2002 AUG 9 AM 8 57

CINDY MESSERSMITH
COUNTY RECORDER

TEKIPPE ENGINEERING, P.C., 128 South Vine Street, West Union, Iowa 52176 Phone (563) 422-6131

UNITED STATES PUBLIC LAND SURVEY CORNER CERTIFICATE

OF

Land Survey Monuments situated in Section 18, Township 94 North, Range 14 West of the Fifth Principal Meridian, CHICKASAW County, Iowa.
Previously recorded in none in County Recorder's Office.
(book, page, document number, etc.)

(Show reason for preparing this certificate, the evidence and detailed procedures used in establishing the corner positions and monumentation found or placed.)

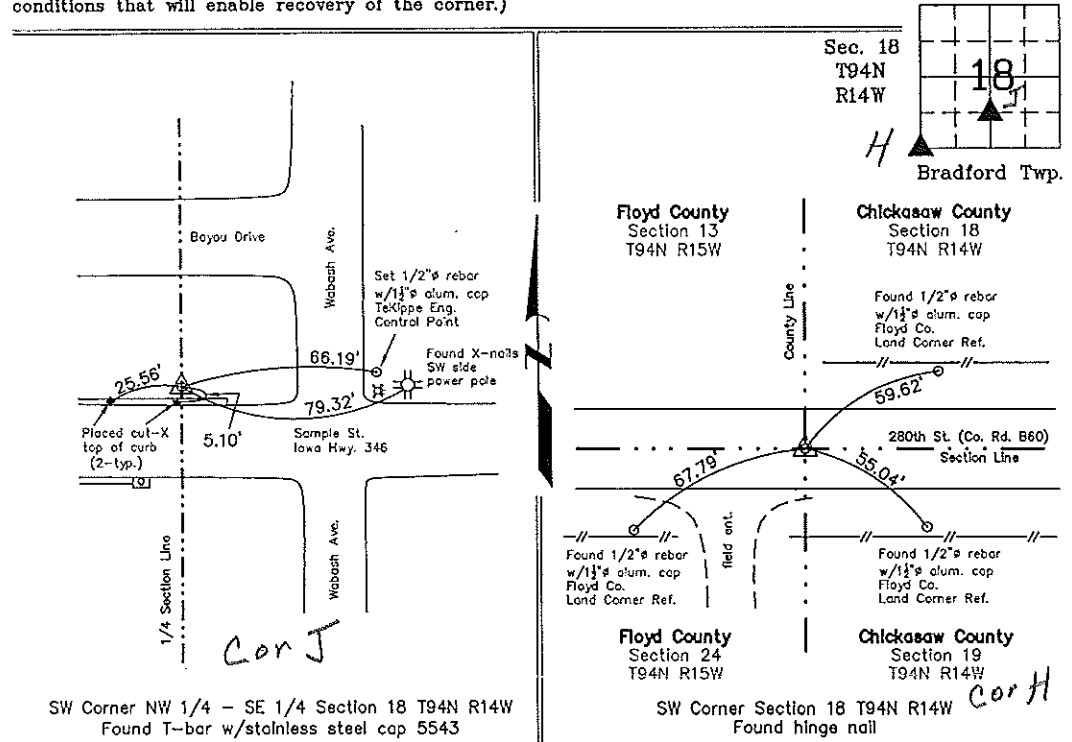
Monument Description and Remarks: SW Corner NW 1/4 - SE 1/4 Section 18 T94N R14W:
Found T-bar with stainless steel cap 5543 with information obtained from the Chickasaw County Engineer's Office in Field Book Bradford Twp. Corner Ties, Section 18, Corner 'A1'.

SW Corner Section 18 T94N R14W: Found hinge nail with information obtained from the Chickasaw County Engineer's Office in Field Book Bradford Twp. Corner Ties, Section 18, Corner 'H'.

PLAN - VIEW

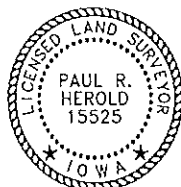
Project Number 02170.LS
FB. Nahsua 1 PG. 1-3

(Show a minimum of three reference ties to durable physical objects, relevant monuments and physical conditions that will enable recovery of the corner.)



SW Corner NW 1/4 - SE 1/4 Section 18 T94N R14W
Found T-bar w/stainless steel cap 5543

SW Corner Section 18 T94N R14W
Found hinge nail



I hereby certify that this land surveying document was prepared and the related survey work was performed by me or under my direct personal supervision and that I am a duly licensed Land Surveyor under the laws of the State of Iowa.

Paul R. Herold 8-8-02
Paul R. Herold Date
License number 15525
My license renewal date is December 31, 2002.
Sheets covered by this seal: Individual

List Corners to be Indexed			
Corners	Section	Twp.	Range
SW-NW-SE	18	94N	14W
SW	18	94N	14W

Filed 8-13-02
X:\Section Corners\Sec. 18\18-94-14ru.dwg

COUNTY ENGINEER'S
COPY

Chickasaw COUNTY
LAND SURVEY MONUMENT RECORD

Sec 19 T 94 N R 14 W

All items to be completed. Please print or type.

1. Type of Monument
(check one)

☒ Section Corner ☐ Bench Mark

☐ Quarter Corner ☐ Other _____

2. Description of Evidence found and location. *NW cor.*

3. Description of monument and/or accessories established by you to perpetuate the location of this point.

*Found corner and retied
as in sketch at right.*

*D. BUSS
J. DEENY
D. ANDERSON*

Date of Field Work 8/29/75

Signed *David Buss*
WHS & Co.

4. Sketch showing relative location of monument and reference points. Show supporting and/or contradictory evidence where applicable.

