

Section 18-94-14
 As set to in
 Engg. Tie Book

TeKIPPE ENGINEERING, P.C., 128 South Vine Street, West Union, Iowa 52175 Phone (319) 422-5131

UNITED STATES PUBLIC LAND SURVEY CORNER CERTIFICATE

OF 19

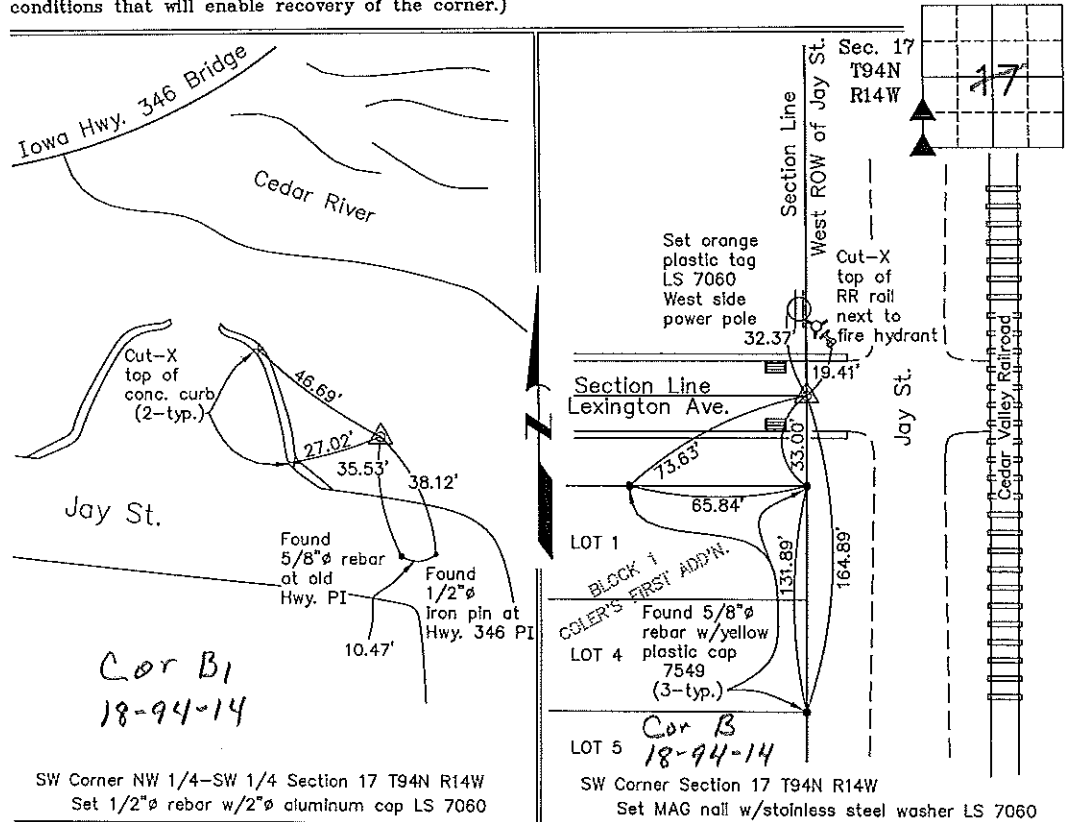
Land Survey Monuments situated in Section 17, Township 94 North, Range 14 West, of the Fifth Principal Meridian, CHICKASAW County, Iowa. Previously recorded in none in County Recorder's Office. (book, page, document number, etc.)

(Show reason for preparing this certificate, the evidence and detailed procedures used in establishing the corner positions and monumentation found or placed.)

Monument Description and Remarks: SW Corner NW 1/4-SW 1/4 Section 17 T94N R14W: Set 1/2"Ø rebar w/2"Ø aluminum cap IS 7060 equidistant and on line between the SW Corner and the calculated position of the W 1/4 Corner of Section 17.
SW Corner Section 17 T94N R14W: Set MAG nail w/stainless steel washer LS 7060 33' North of the NE Corner of Lot 1, Block 1, Coler's First Addition. This position is based on the Original Survey of Coler's First Addition, recorded in the Chickasaw County Recorder's Office on April 2, 1868, in Deeds Book K, Page 147.

PLAN - VIEW

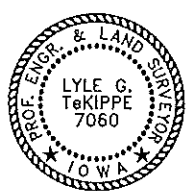
(Show a minimum of three reference ties to durable physical objects, relevant monuments and physical conditions that will enable recovery of the corner.)



Cor B1
 18-94-14

SW Corner NW 1/4-SW 1/4 Section 17 T94N R14W
 Set 1/2"Ø rebar w/2"Ø aluminum cap LS 7060

SW Corner Section 17 T94N R14W
 Set MAG nail w/stainless steel washer LS 7060



I hereby certify that this land surveying document was prepared and the related survey work was supervised by me or under my direct personal supervision and that I am a duly licensed Land Surveyor under the laws of the State of Iowa.

Lyle G. TeKippe 2-17-99
 Lyle G. TeKippe Date
 License number 7060
 My license renewal date is December 31, 2000.
 Sheets covered by this seal: Individual

List Corners to be Indexed			
Corners	Section	Twp.	Range
SW-NW-SW	17	94N	14W
Corner B1 18-94-14			
SW	17	94N	14W
Corner B-18-94-14			

170-346

Placed in tie Book
 2/22/99 "County Engineer's Copy"