

UNITED STATES PUBLIC LAND SURVEY CORNER CERTIFICATE

OF

Land Survey Monuments situated in Section 19, Township 94 North, Range 14 West, of the Fifth Principal Meridian, CHICKASAW County, Iowa.

Previously recorded in none in County Recorder's Office.  
(book, page, document number, etc.)

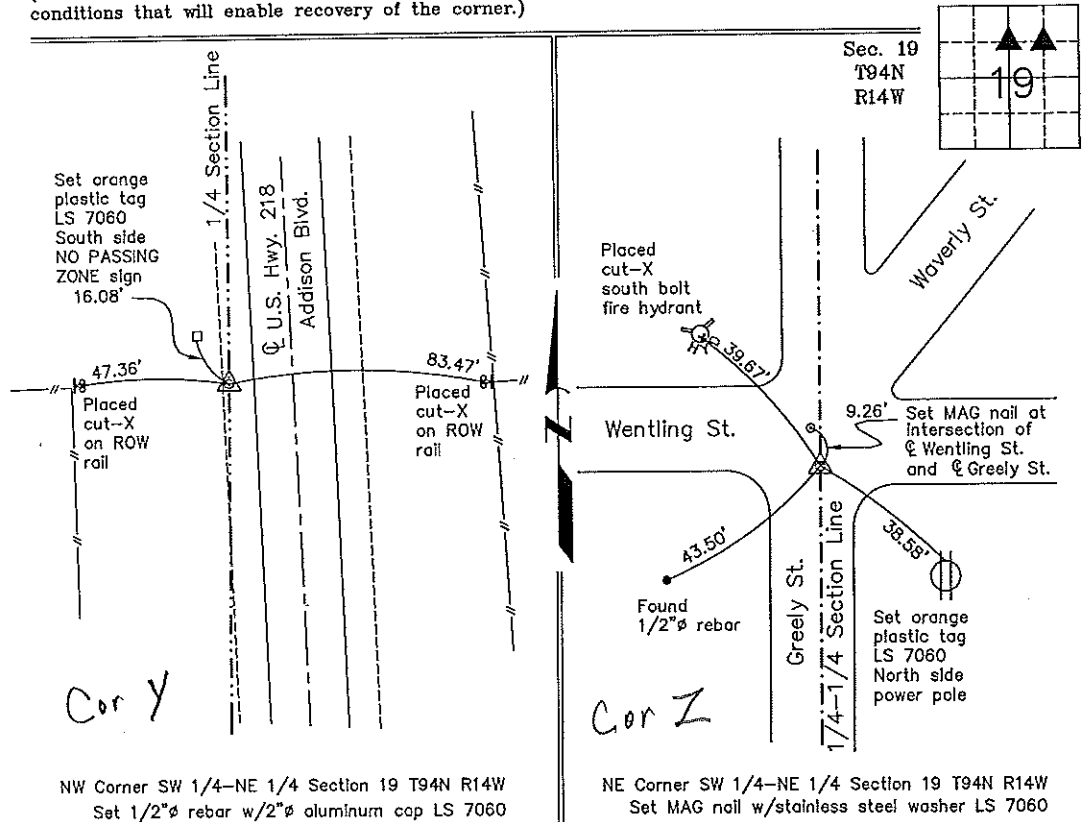
(Show reason for preparing this certificate, the evidence and detailed procedures used in establishing the corner positions and monumentation found or placed.)

Monument Description and Remarks: NW Corner SW 1/4-NE 1/4 Section 19 T94N R14W:  
Set 1/2"Ø rebar w/2"Ø aluminum cap LS 7060 equidistant and on line between the N 1/4 corner and the Center of Section 19.

NE Corner SW 1/4-NE 1/4 Section 19 T94N R14W: Set MAG nail w/stainless steel washer LS 7060 at the intersection of 1/4-1/4 section lines after the standard mathematical subdivision of the NE 1/4 of Section 19.

PLAN - VIEW

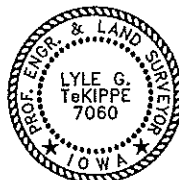
(Show a minimum of three reference ties to durable physical objects, relevant monuments and physical conditions that will enable recovery of the corner.)



NW Corner SW 1/4-NE 1/4 Section 19 T94N R14W  
Set 1/2"Ø rebar w/2"Ø aluminum cap LS 7060

NE Corner SW 1/4-NE 1/4 Section 19 T94N R14W  
Set MAG nail w/stainless steel washer LS 7060

I hereby certify that this land surveying document was prepared and the related survey work was performed by me or under my direct personal supervision and that I am a duly licensed Land Surveyor under the laws of the State of Iowa.



*Lyle G. TeKippe* 9-1-99  
Lyle G. TeKippe Date  
License number 7060  
My license renewal date is December 31, 2000.  
Sheets covered by this seal: Individual

List Corners to be Indexed			
Corners	Section	Twp.	Range
NW-SW-NE	19	94N	14W
NE-SW-NE	19	94N	14W

*Placed in Tee Book 9/20/99*