

UNITED STATES PUBLIC LAND SURVEY CORNER CERTIFICATE

OF

Land Survey Monuments situated in Section 17, Township 94 North, Range 14 West, of the Fifth Principal Meridian, CHICKASAW County, Iowa. Previously recorded in none in County Recorder's Office. (book, page, document number, etc.)

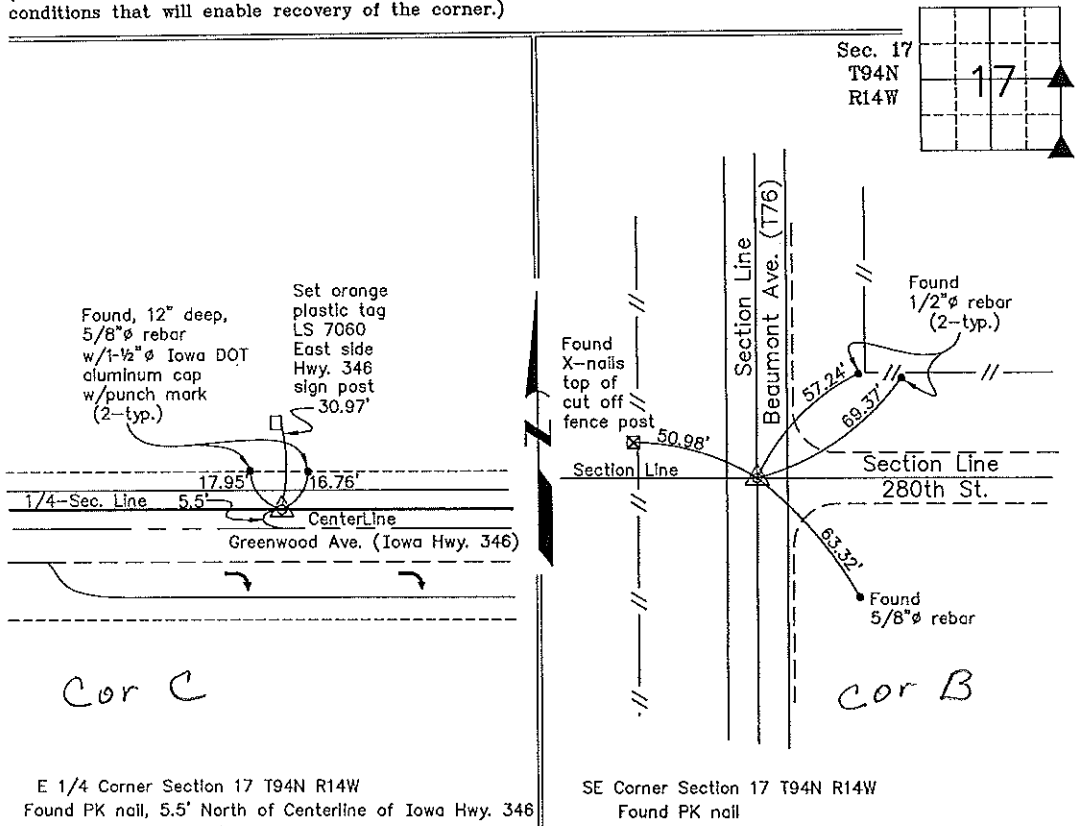
(Show reason for preparing this certificate, the evidence and detailed procedures used in establishing the corner positions and monumentation found or placed.)

Monument Description and Remarks: E 1/4 Corner Section 17 T94N R14W: Found PK nail, 5.5' North of centerline of Iowa Hwy. 346, with information obtained from Iowa Department of Transportation Corner Ties.

SE Corner Section 17 T94N R14W: Found PK nail with information obtained from the Chickasaw County Engineer's Office in Field Book "Bradford Twp. Corner Ties", Section 17, Corner "B".

PLAN - VIEW

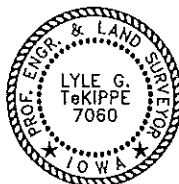
(Show a minimum of three reference ties to durable physical objects, relevant monuments and physical conditions that will enable recovery of the corner.)



E 1/4 Corner Section 17 T94N R14W
 Found PK nail, 5.5' North of Centerline of Iowa Hwy. 346

SE Corner Section 17 T94N R14W
 Found PK nail

I hereby certify that this land surveying document was prepared and the related survey work was performed by me or under my direct personal supervision and that I am a duly licensed Land Surveyor under the laws of the State of Iowa.



Lyle G. Tekippe 2-17-99
 Lyle G. Tekippe Date
 License number 7060
 My license renewal date is December 31, 2000.
 Sheets covered by this seal: Individual

List Corners to be Indexed

Corners	Section	Twp.	Range
---------	---------	------	-------

E 1/4	17	94N	14W
Corner C	17-94-14		
SE	17	94N	14W
Corner B	17-94-14		