

2002 MAR 22 AM 9 07

CINDY MESSERSMITH
 COUNTY RECORDER

TeKIPPE ENGINEERING, P.C., 128 South Vine Street, West Union, Iowa 52175 Phone (563) 422-5131

UNITED STATES PUBLIC LAND SURVEY CORNER CERTIFICATE

OF

Land Survey Monuments situated in Section 16, Township 94 North, Range 14 West of the Fifth Principal Meridian, CHICKASAW County, Iowa. Previously recorded in none in County Recorder's Office.
(book, page, document number, etc.)

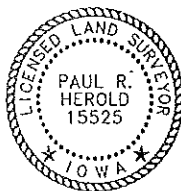
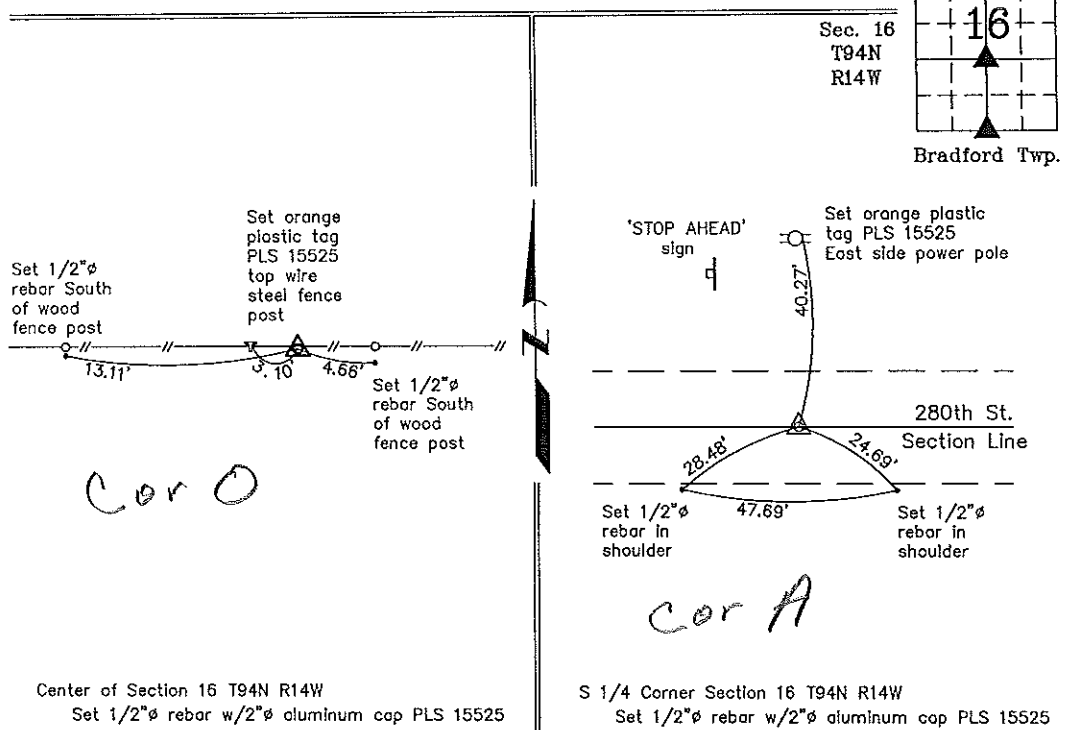
(Show reason for preparing this certificate, the evidence and detailed procedures used in establishing the corner positions and monumentation found or placed.)

Monument Description and Remarks: Center of Section 16 T94N R14W: Set 1/2"Ø rebar w/2"Ø aluminum cap PLS 15525 at the intersection of the 1/4 Section Lines.
S 1/4 Corner Section 16 T94N R14W: Set 1/2"Ø rebar w/2"Ø aluminum cap PLS 15525 by extending a line from the SW Corner through a point 33' West of the P.I. in Cheyenne Avenue (Record location of the 1/4 - 1/4 - 1/4 section corner position) by the amount of one third the distance between the SW Corner and the point 33' West of said P.I., and extended the distance to the East to establish the corner position.

PLAN - VIEW

169414MW.DWG Project Number 02034.LS
 FB. 461 PG. 69-76

(Show a minimum of three reference ties to durable physical objects, relevant monuments and physical conditions that will enable recovery of the corner.)



I hereby certify that this land surveying document was prepared and the related survey work was performed by me or under my direct personal supervision and that I am a duly licensed Land Surveyor under the laws of the State of Iowa.

Paul R. Herold 3-21-02
 Paul R. Herold Date
 License number 15525
 My license renewal date is December 31, 2002.
 Sheets covered by this seal: Individual

List Corners to be Indexed			
Corners	Section	Twp.	Range
Center	16	94N	14W
S 1/4	16	94N	14W

Filed 3-26-02

County Engineer's Copy