

Section 21-94-14
 As ref. to in
 Engr. Tie Book

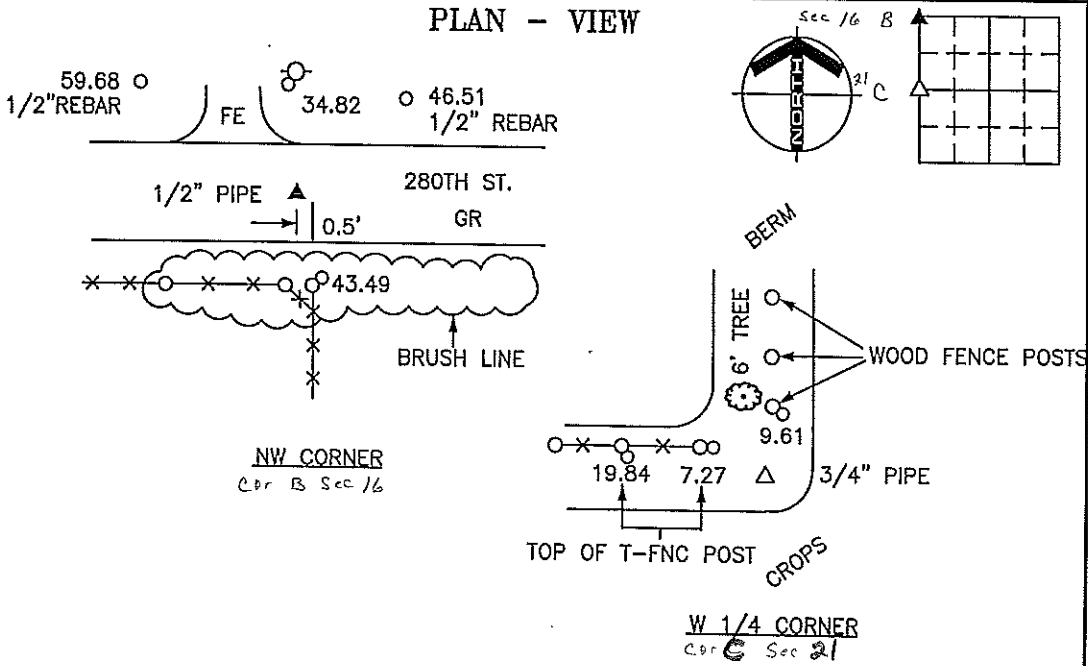
PREPARED BY: DARYL EIFFLER, 215 N ADAMS, MASON CITY, IOWA 50401, 641-424-6344

UNITED STATES PUBLIC LAND SURVEY CORNER CERTIFICATE OF

Land Survey Monuments situated in Section 22, Township 94 NORTH, Range 14 WEST, of the Fifth Principal Meridian, CHICKASAW County, Iowa
 Previously recorded in _____ DOES NOT APPLY in County Recorder's Office.
 (book, page, document number, etc.)

Monument Description and Remarks: NO CERTIFICATES OF RECORD FOR THESE CORNERS.
NW CORNER - FOUND 1/2" PIPE 0.3' DOWN USING CHICKASAW ENGINEERING DEPT. REFERENCE TIE SHEET. SET TIES AS SHOWN.
W 1/4 CORNER - DUG & PROBED AT PROBABLE LOCATION AND FOUND NOTHING. SET 3/4" PIPE MIDWAY AND ON-LINE BETWEEN NW CORNER AND SW CORNER WHICH MATCHES WITHIN 2' OF FENCE INTERSECTION WEST AND NORTH. SET TIES AS SHOWN.

PLAN - VIEW



LEGEND

- x-x-o - UTILITY POLE
- - - - - EXISTING FENCE, FENCE POST
- ▲ - FOUND LAND CORNER
- ● - SET LAND CORNER
- ○ - FOUND REFERENCE TIE
- ○ - SET REFERENCE TIES ARE A BRASS DISK STAMPED RLS 13804 UNLESS NOTED
- SRP - SURVEY REFERENCE POINT
- ACC - ASPHALT CEMENT CONCRETE SURFACING
- PCC - PORTLAND CEMENT CONCRETE SURFACING
- GR - GRAVEL SURFACING

ENGINEERS • ARCHITECTS
SURVEYORS • PLANNERS
LANDSCAPE ARCHITECTS
YAGGY COLBY ASSOCIATES
 215 NORTH ADAMS
 MASON CITY, IOWA 50401
 641-424-6344
 641-424-0351

FILE 941422

I HEREBY CERTIFY THAT THIS LAND SURVEYING DOCUMENT WAS PREPARED BY ME OR UNDER MY DIRECT PERSONAL SUPERVISION AND THAT I AM A DULY LICENSED LAND SURVEYOR UNDER THE LAWS OF THE STATE OF IOWA.

Daryl Eiffler
 DARYL EIFFLER

DATE: 12/22/00 LICENSE NO. 13804
 MY LICENSE RENEWAL DATE IS DECEMBER 31, 2000

2000-2309

SEAL

PROJECT NO. 7036

Corners	Section	Twp	Range
NW	22	94N	14W
B	16		
W 1/4	22	94N	14W
C	21		

Filed 3-20-01