



Prepared by & Return to: Herold - Reicks Surveying, 10 East Main Street, New Hampton, IA 50659, Ph. 641-394-2725

United States Public Land Survey Corner Certificate

Land Survey Monument situated in
 Section 23, Township 94 North, Range 14 West of the Fifth Principal Meridian, Chickasaw County, Iowa.
 On file in Document #2008-1681 in the County Recorder's office.

This certificate is being prepared in compliance with Iowa Code Chapter 355.11 because:

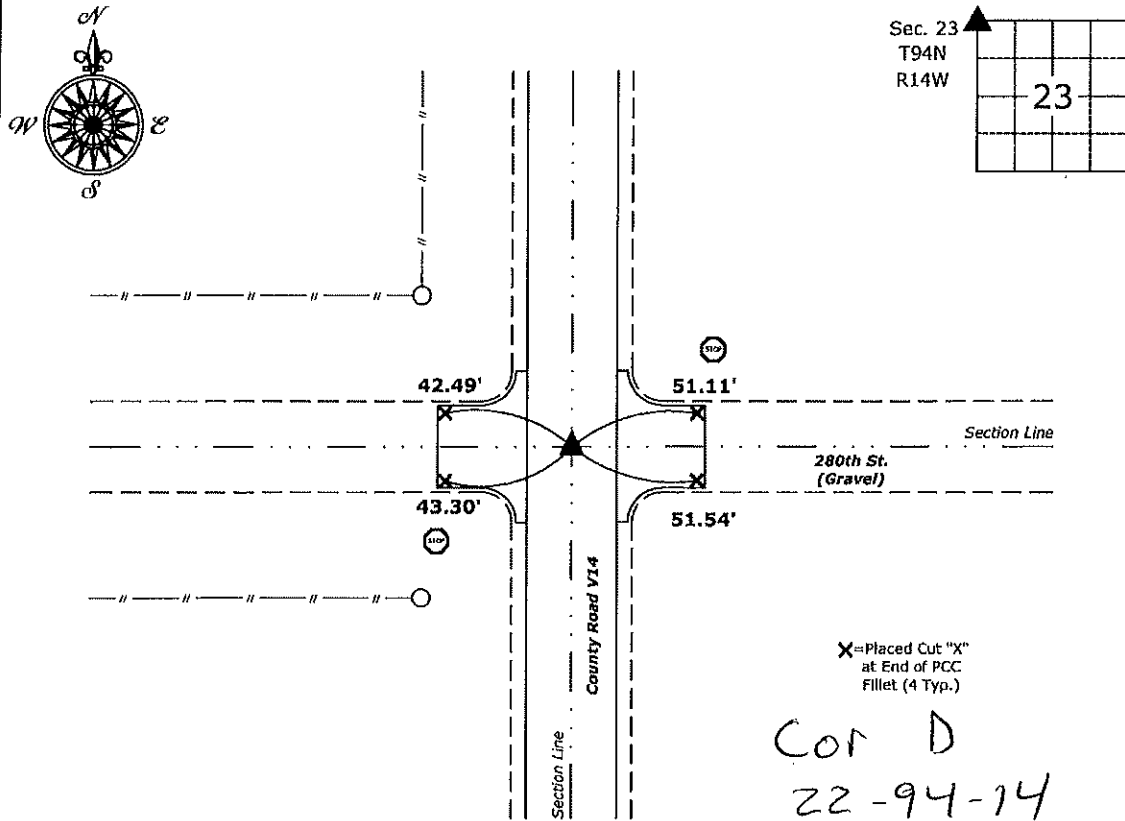
- There is no certificate on file for this corner.
- There are no longer three valid ties of record.
- There are changes to reference ties of record.
- There is change of monumentation of record.
- To clarify description of record monument (ties).

Monument Description and Remarks:

Northwest Corner: Found Lead Plug and Cut "X" with information obtained from the previously recorded Section Corner Certificate. Reset 1"Ø Bronze Survey Marker PLS 19211 with coordinates obtained prior to highway reconstruction. Corner was reset in conjunction with Project No. FM-CO19(88)--55-19.

Plan View

(Show a minimum of three reference ties to durable physical objects, relevant monuments and physical conditions that will enable recovery of the corner.)



Northwest Corner of Section 23-94-14
 Set 1"Ø Bronze Survey Marker PLS 19211



I hereby certify that this land surveying document was prepared and the related survey work was performed by me or under my direct personal supervision and that I am a duly licensed Land Surveyor under the laws of the State of Iowa.
Kirk D. Reicks 11-20-18
 Kirk D. Reicks Date:
 License number 19211
 My license renewal date is December 31, 2018.
 Sheets covered by this seal: Individual sheet only

List Corner to be Indexed			
Corner	Section	Twp.	Range
NW	23	94	14
Project Number: 2018-805			
FB: Chickasaw 8, Pgs. 72			

Chickasaw Co. Recorder
 Cindy Messersmith
Fee Book 2008-1681
 09/02/2008 @1130AM
 SCC SEC COR CERT
 Book: Page: # Pages: 1
 Total Fees: \$7.00

Section 15-94-14
 As ref. to in
 Eng. Fee Book

Herold - Recks Surveying, 25 1/2 East Main Street, Suite 204, New Hampton, IA 50659, Ph. 641-394-2725

UNITED STATES PUBLIC LAND SURVEY CORNER CERTIFICATE

Land Survey Monuments situated in Section ¹⁵ 23, Township 94 North, Range 14 West of the Fifth Principal Meridian, Chickasaw County, Iowa. Both previously recorded in Bk. 168, Pg. 174, in the Chickasaw County Recorder's office.

This certificate is being prepared in compliance with Iowa Code Chapter 355.11 because:

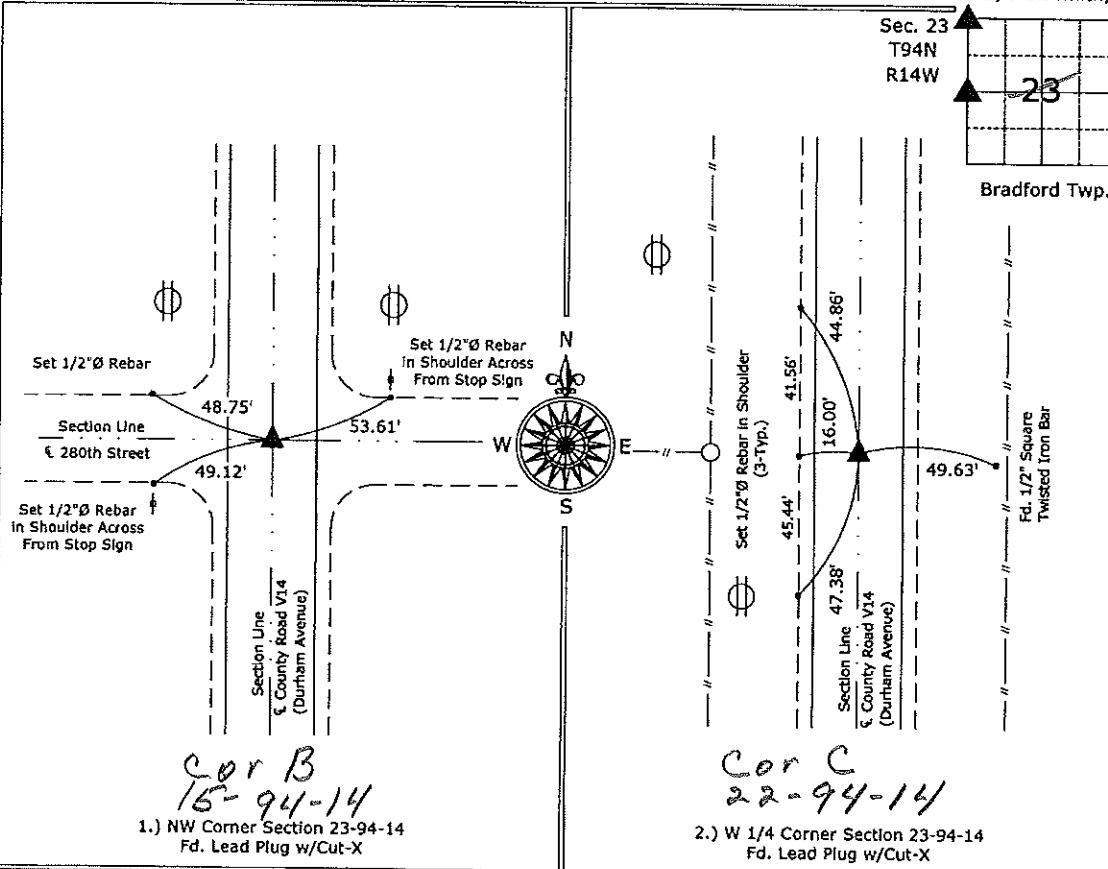
- There is no certificate on file for this corner.
- There are no longer three valid ties of record.
- There are changes to reference ties of record.
- There is change of monumentation of record.
- To clarify description of record monument (ties).

Monument Description and Remarks:

- 1.) NW Corner Section 23-94-14: Fd. Lead Plug w/Cut-X from information on the previous Section Corner Certificate, the monument matches that of record and the distances to adjacent corners also confirm the monument, all of the ties on the previous certificate have been destroyed.
- 2.) W 1/4 Corner Section 23-94-14: Fd. Lead Plug w/Cut-X from information on the previous Section Corner Certificate, the monument matches that of record and the distances to adjacent corners also confirm the monument, all of the ties on the previous certificate have been destroyed and one original tie not shown on the previous certificate was recovered.

PLAN - VIEW

(Show a minimum of three reference ties to durable physical objects, relevant monuments and physical conditions that will enable recovery of the corner.)



Cor B
 15-94-14
 1.) NW Corner Section 23-94-14
 Fd. Lead Plug w/Cut-X

Cor C
 22-94-14
 2.) W 1/4 Corner Section 23-94-14
 Fd. Lead Plug w/Cut-X



I hereby certify that this land surveying document was prepared and the related survey work was performed by me or under my direct personal supervision and that I am a duly licensed Land Surveyor under the laws of the State of Iowa.

Paul R. Herold 8-29-08
 Paul R. Herold Date:

License number 15525
 My license renewal date is December 31, 2008.
 Sheets covered by this seal: Individual sheet only

List Corners to be Indexed			
Corners	Section	Twp.	Range
NW	23	94	14
W 1/4	23	94	14

Project Number: 2008-085
 FB: Chickasaw County 1, Pgs. 76-77

UNITED STATES PUBLIC LAND SURVEY CORNER CERTIFICATE

Section 15-94-14
 As ref. to in
 Engr. Tie Book

Land Survey Monuments situated in Section 22 15, Township 94 North, Range 14 West, of the Fifth Principal Meridian, Chickasaw County, Iowa.

Previously recorded in N/A in County Recorder's Office.
 (book, page, document number, etc.)

(Show reason for preparing this certificate, the evidence and detailed procedures used in establishing the corner positions and monumentation found or placed.)

Monument Description and Remarks: Found 1" iron pin 2' deep in center of road and 40' north of South Row fence at North 1/4 corner.
Found lead plug in paving 4.3' west of centerline at NE corner.
Found lead plug near centerline of paving at East 1/4 corner.

PLAN - VIEW

(Show a minimum of three reference ties to durable physical objects, relevant monuments and physical conditions that will enable recovery of the corner)

39.75' to tag in Power pole North
 44.50' to " " " " NW
 40.75' " " " wood post South

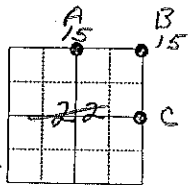
N 1/4 COR.
 RAISED WITH 1/2" rebar.

Cor A
 15-94-14

NE CORNER

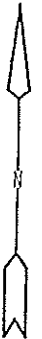
62.50' "x" nails in Power Pole NW
 68.62' to tag in wood post SW
 58.90' to "x" nails in power pole Northeast

Cor C



Cor B
 15-94-14

50.95' to "x" nails in wood post NE
 57.40' "x" nails wood post SE
 50.15' steel cor. post to west



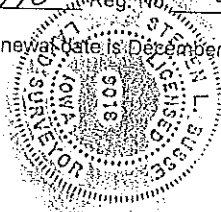
I hereby certify that the survey work was completed and this land surveying document was prepared by me or under my direct personal supervision and that I am a duly licensed land surveyor under the laws of the state of Iowa

Signature: Steve Busse
 Name typed or printed STEVE BUSSE

Date: 7/13/98 Reg. No. 9018

My license renewal date is December 31, 1998

SEAL



Corners	List Corners to be Indexed		
	Section	Twp	Range
N 1/4 COR.	22	94	14
NE COR.	22	94	14
E 1/4 COR.	22	94	14