

Section 23-94-14
 As ref. to in
 Engr. Tie Book

FILED 2003-3753
 RECORDER'S OFFICE
 CHICKASAW COUNTY, IOWA

2003 DEC 19 AM 8 53

CINDY MESSERSMITH
 COUNTY RECORDER

TeKIPPE ENGINEERING, P.C., 128 South Vine Street, West Union, Iowa 52175 Phone (563) 422-6131

CORRECTIVE
UNITED STATES PUBLIC LAND SURVEY CORNER CERTIFICATE

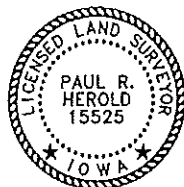
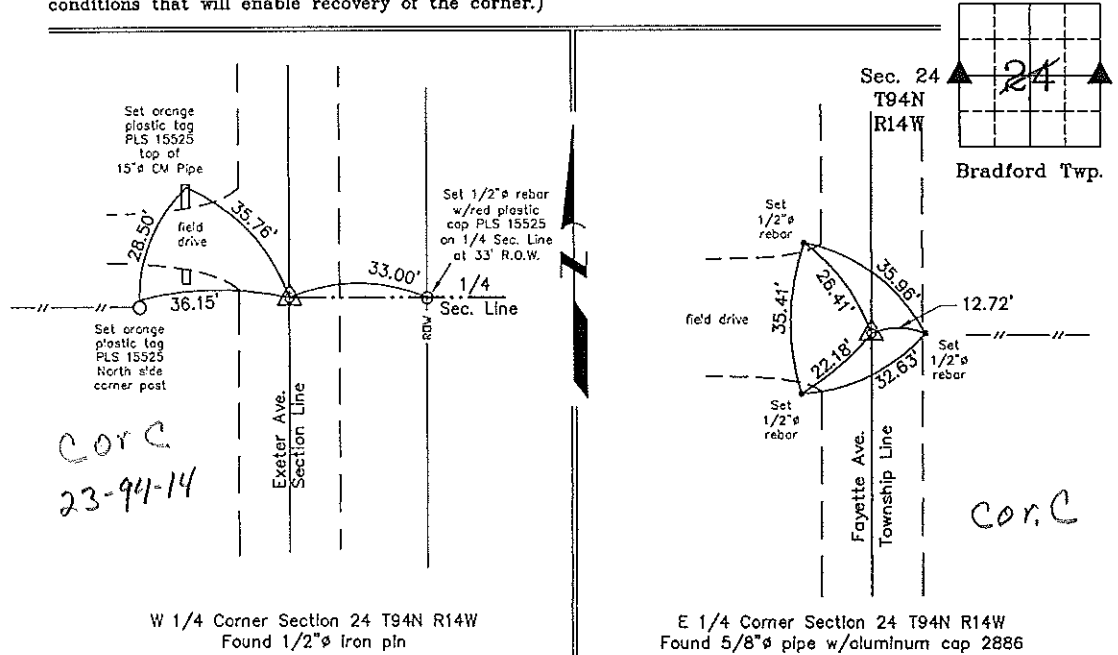
OF ²³
 Land Survey Monuments situated in Section 24, Township 94 North, Range 14 West of the Fifth Principal Meridian, CHICKASAW County, Iowa. Previously recorded in 2003-3668 in County Recorder's Office.
 (book, page, document number, etc.)

(Show reason for preparing this certificate, the evidence and detailed procedures used in establishing the corner positions and monumentation found or placed.)

Monument Description and Remarks: Corrective of previous Section Corner Certificate Document # 2003-3668: A distance to a reference tie for the E 1/4 Corner had been omitted. W 1/4 Corner Section 24 T94N R14W: Found 1/2"Ø iron pin with information obtained from the Chickasaw County Engineer's Office in Field Book Bradford Twp. Corner Ties, Section 23, Corner 'C'. E 1/4 Corner Section 24 T94N R14W: Found 5/8"Ø pipe w/aluminum cap 2886 with information obtained from the previous Section Corner Certificate recorded in the Chickasaw County Recorder's Office in Deeds Book 169, Page 350. All previous reference ties were missing. Three reference ties were added.

PLAN - VIEW

(Show a minimum of three reference ties to durable physical objects, relevant monuments and physical conditions that will enable recovery of the corner.)



I hereby certify that this land surveying document was prepared and the related survey work was performed by me or under my direct personal supervision and that I am a duly licensed Land Surveyor under the laws of the State of Iowa.

Paul R. Herold 12-18-03
 Paul R. Herold Date
 License number 15525
 My license renewal date is December 31, 2004.
 Sheets covered by this seal: Individual

| List Corners to be Indexed | | | |
|----------------------------|---------|------|-------|
| Corners | Section | Twp. | Range |
| W 1/4 | 24 | 94N | 14W |
| E 1/4 | 24 | 94N | 14W |

X:\Section Corners\Sec. 24\24-94-14ko.dwg
 Project Number 03218.LS
 FB. 46K PG. 37-38

FILED 2003-3668
 RECORDER'S OFFICE
 CHICKASAW COUNTY, IOWA
 2003 DEC 9 AM 8 52
 CINDY MESSERSMITH
 COUNTY RECORDER

TeKIPPE ENGINEERING, P.C., 128 South Vine Street, West Union, Iowa 52175 Phone (563) 422-6131

UNITED STATES PUBLIC LAND SURVEY CORNER CERTIFICATE

OF

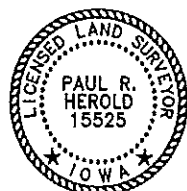
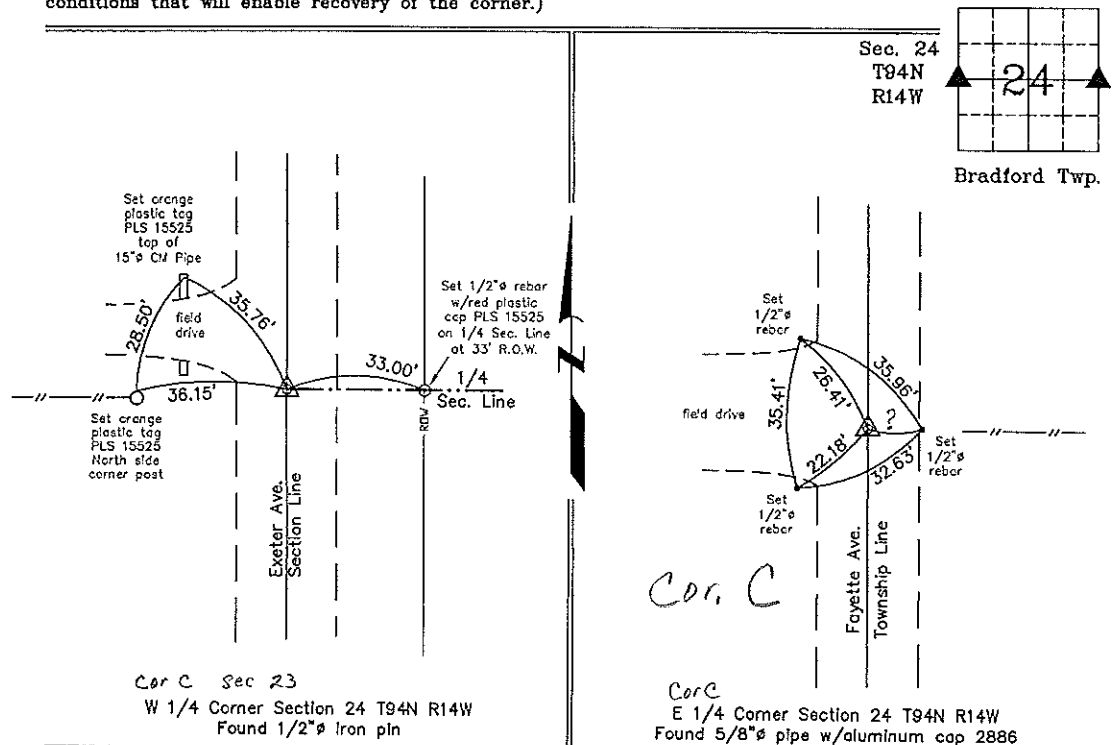
Land Survey Monuments situated in Section 24, Township 94 North, Range 14 West of the Fifth Principal Meridian, CHICKASAW County, Iowa. Previously recorded in (1) none (2) Bk 169 Pg 350 in County Recorder's Office.
(book, page, document number, etc.)

(Show reason for preparing this certificate, the evidence and detailed procedures used in establishing the corner positions and monumentation found or placed.)

Monument Description and Remarks: (1) W 1/4 Corner Section 24 T94N R14W: Found 1/2"Ø iron pin with information obtained from the Chickasaw County Engineer's Office in Field Book Bradford Twp. Corner Ties, Section 23, Corner 'C'.
(2) E 1/4 Corner Section 24 T94N R14W: Found 5/8"Ø pipe w/aluminum cap 2886 with information obtained from the previous Section Corner Certificate recorded in the Chickasaw County Recorder's Office in Deeds Book 169, Page 350. All previous reference ties were missing. Three reference ties were added.

PLAN - VIEW

(Show a minimum of three reference ties to durable physical objects, relevant monuments and physical conditions that will enable recovery of the corner.)



I hereby certify that this land surveying document was prepared and the related survey work was performed by me or under my direct personal supervision and that I am a duly licensed Land Surveyor under the Laws of the State of Iowa.

Paul R. Herold 12-8-03
 Paul R. Herold Date

License number 15525
 My license renewal date is December 31, 2004.
 Sheets covered by this seal: Individual

| List Corners to be Indexed | | | |
|----------------------------|---------|------|-------|
| Corners | Section | Twp. | Range |
| W 1/4 | 24 | 94N | 14W |
| E 1/4 | 24 | 94N | 14W |

X:\Section Corners\Sec. 24\24-94-14ko.dwg
 Project Number 03218.LS
 FB. 48K PG. 37-38