

Section 14-94-14
As ref. to in
Engr. Tie Book

Chickasaw Co. Recorder
Cindy Messersmith
Fee Book 2008-1680
09/02/2008 8:11:27AM
SCC SEC COR CERT
Book: Page: # Pages: 1
Total Fees: \$7.00

Herold - Reicks Surveying, 25 1/2 East Main Street, Suite 204, New Hampton, IA 50659, Ph. 641-394-2725

UNITED STATES PUBLIC LAND SURVEY CORNER CERTIFICATE

Land Survey Monuments situated in Section 23, Township 94 North, Range 14 West of the Fifth Principal Meridian, Chickasaw County, Iowa., 2.) previously recorded as Doc. #2005-1081, in the Chickasaw County Recorder's office, 1.) Previously not recorded.

This certificate is being prepared in compliance with Iowa Code Chapter 355.11 because:

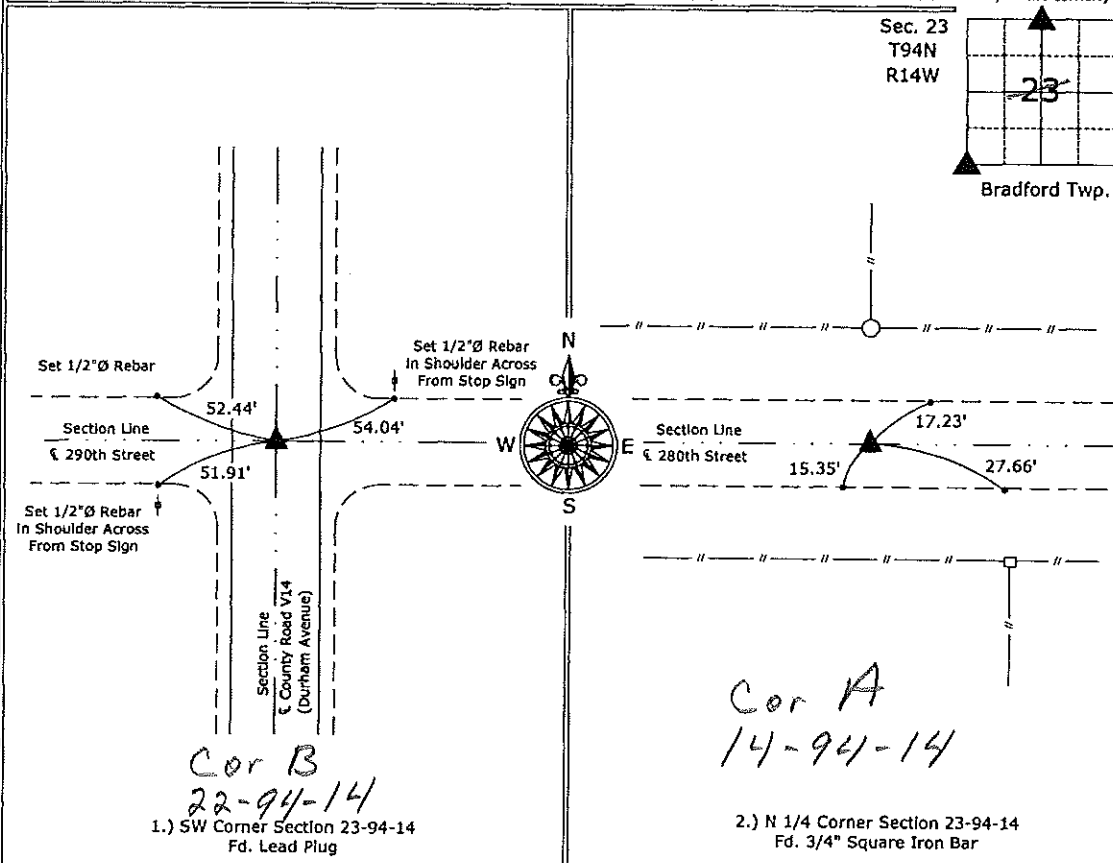
- 1. There is no certificate on file for this corner.
- 2. There are no longer three valid ties of record.
- There are changes to reference ties of record.
- There is change of monumentation of record.
- 2. To clarify description of record monument (ties).

Monument Description and Remarks:

- 1.) SW Corner Section 23-94-14: Fd. Lead Plug from information obtained from the County Engineer's Office in Field Book, Bradford Twp. Corner Ties, Section 22, Corner "B", Note: the Lead Plug is beneath a large tar patch on Centerline.
- 2.) N 1/4 Corner Section 23-94-14: Fd. 3/4" Square Iron Bar from information on the previous Section Corner Certificate, the monument does not match the description on the previous certificate, that description stated that it was a 1/2"Ø Iron Pin, the top of the monument could be mistaken for that, however after close examination that description was found to be incorrect, the distances to adjacent corners confirm the monument, however all of the ties on the previous certificate have been destroyed, established three new ties.

PLAN - VIEW

(Show a minimum of three reference ties to durable physical objects, relevant monuments and physical conditions that will enable recovery of the corner.)



I hereby certify that this land surveying document was prepared and the related survey work was performed by me or under my direct personal supervision and that I am a duly licensed Land Surveyor under the laws of the State of Iowa.

Paul R. Herold 8-29-08
Paul R. Herold Date:
License number 15525
My license renewal date is December 31, 2008.
Sheets covered by this seal: Individual sheet only

List Corners to be Indexed			
Corners	Section	Twp.	Range
SW	23	94	14
N 1/4	23	94	14

Project Number: 2008-085
FB: Chickasaw County 1, Pgs. 76-77

File: S:\Projects\2008\2008-085\dwg\2008-085.dwg, 8/18/2008 10:00:37

Section 14-94-14
 As ref. to in
 Engr. Tie Book

FILED 2005-1081
 RECORDER'S OFFICE
 CHICKASAW COUNTY, IOWA
 2005 JUN 6 AM 9 54
 CINDY MESSERSMITH
 COUNTY RECORDER

TeKIPPE ENGINEERING, P.C., 128 South Vine Street, West Union, Iowa 52175 Phone (563) 422-5131

UNITED STATES PUBLIC LAND SURVEY CORNER CERTIFICATE

OF 14

Land Survey Monuments situated in Section 23, Township 94 North, Range 14 West of the Fifth Principal Meridian, CHICKASAW County, Iowa.

Previously recorded in none in County Recorder's Office.
(book, page, document number, etc.)

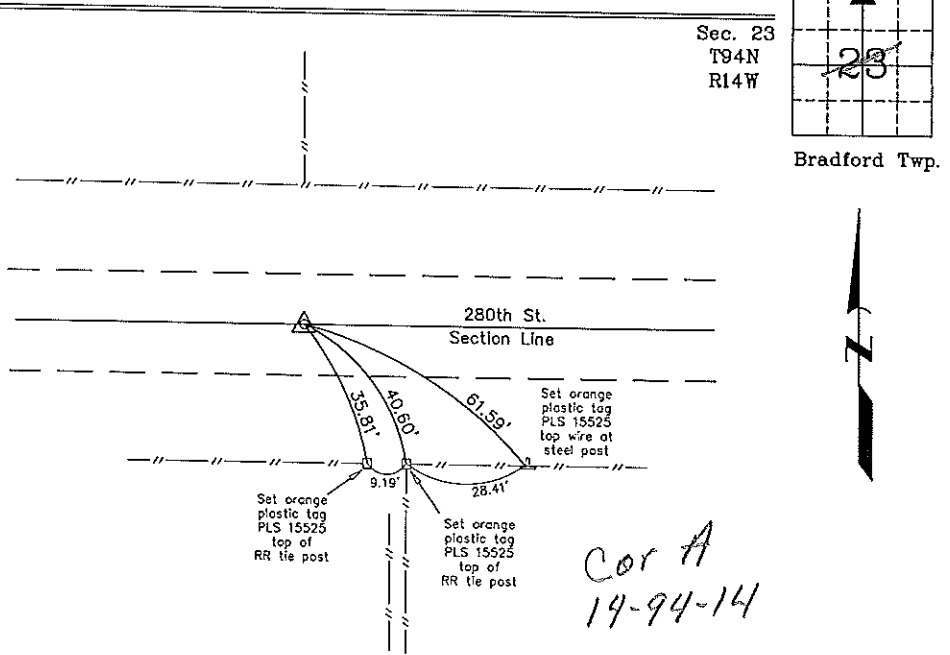
(Show reason for preparing this certificate, the evidence and detailed procedures used in establishing the corner positions and monumentation found or placed.)

Monument Description and Remarks: N 1/4 Corner Section 23 T94N R14W: Found 1/2"Ø iron pin with information obtained from a Survey and Plat made by L.P. Erdman recorded in the Chickasaw County Recorder's Office September 27, 1976 in Book 112, Page 245.

PLAN - VIEW

Cor A Sec 14

(Show a minimum of three reference ties to durable physical objects, relevant monuments and physical conditions that will enable recovery of the corner.)



N 1/4 Corner Section 23 T94N R14W
 Found 1/2"Ø Iron pin



I hereby certify that this land surveying document was prepared and the related survey work was performed by me or under my direct personal supervision and that I am a duly licensed Land Surveyor under the laws of the State of Iowa.

Paul R. Herold 6-3-05
 Paul R Herold Date

License number 15525
 My license renewal date is December 31, 2006.
 Sheets covered by this seal: Individual

Corners	List Corners to be Indexed		
	Section	Twp.	Range
N 1/4	23	94N	14W

Project Number 05105.1S
 FB. Nashua #1 PG. 27-28
 X:\Section Corners\Sec. 23\23-94-14c.dwg