

Prepared by & Return to: Herold - Recks Surveying, 10 East Main Street, New Hampton, IA 50655, Ph. 641-394-2725

United States Public Land Survey Corner Certificate

Land Survey Monument situated in
 Section 13, Township 94 North, Range 14 West of the Fifth Principal Meridian, Chickasaw County, Iowa.
 Not on file in the County Recorder's office.

This certificate is being prepared in compliance with Iowa Code Chapter 355.11 because:

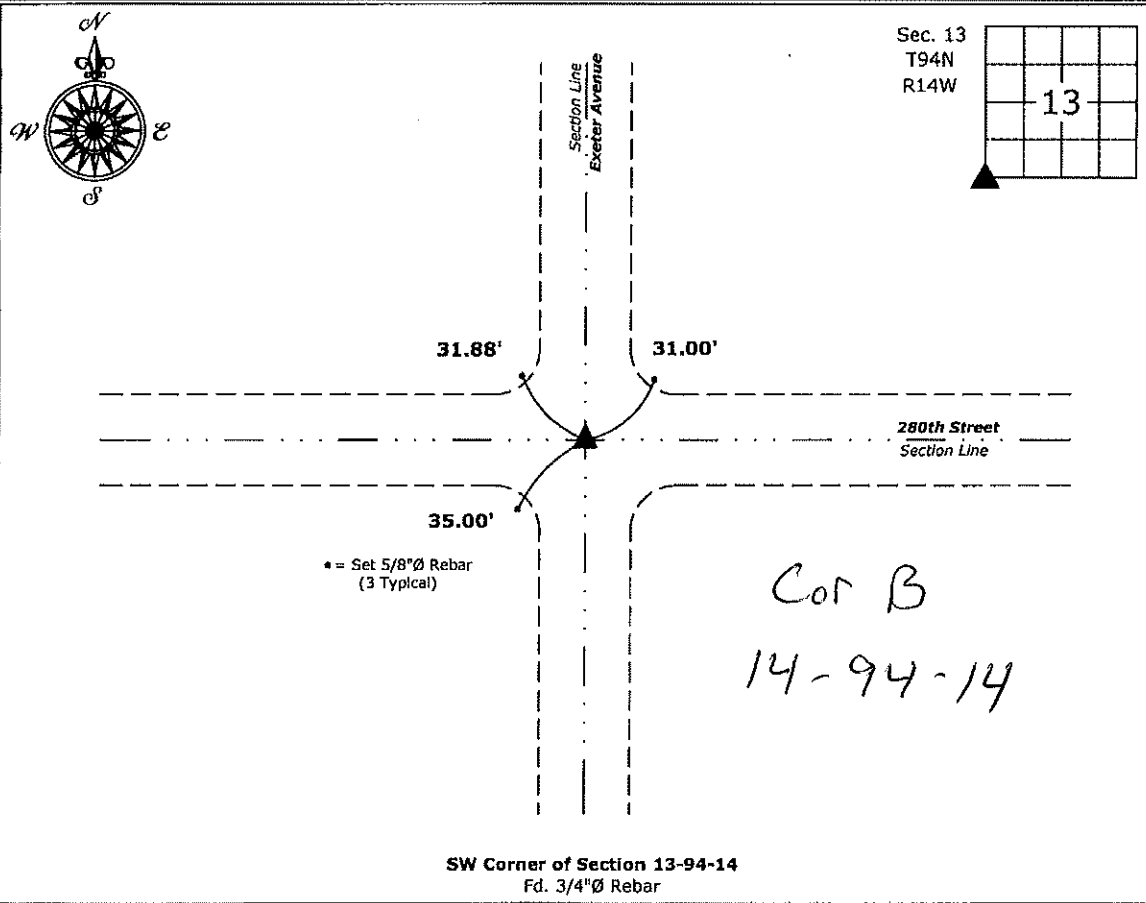
- There is no certificate on file for this corner.
- There are no longer three valid ties of record.
- There are changes to reference ties of record.
- There is change of monumentation of record.
- To clarify description of record monument (ties).

Monument Description and Remarks:

SW Corner: Found 3/4"Ø Rebar with information obtained from the County Engineer's Office in Field Book Bradford Township Corner Ties, Section 14, Corner "B"

Plan View

(Show a minimum of three reference ties to durable physical objects, relevant monuments and physical conditions that will enable recovery of the corner.)



SW Corner of Section 13-94-14
 Fd. 3/4"Ø Rebar



I hereby certify that this land surveying document was prepared and the related survey work was performed by me or under my direct personal supervision and that I am a duly licensed Land Surveyor under the laws of the State of Iowa.

Paul R. Herold 1-21-19
 Paul R. Herold Date:
 License number 15525
 My license renewal date is December 31, 2020.
 Sheets covered by this seal: Individual sheet only

List Corner to be Indexed

Corner	Section	Twp.	Range
SW	13	94	14

Project Number: 2018-148
 FB: Chickasaw County 8, Pg. 75