



Prepared by & Return to: Herold - Recks Surveying, 10 East Main Street, New Hampton, IA 50659, Ph. 641-394-2725

### United States Public Land Survey Corner Certificate

Land Survey Monument situated in  
 Section 13, Township 94 North, Range 14 West of the Fifth Principal Meridian, Chickasaw County, Iowa.  
 On file in Book 153, Page 393 in the County Recorder's office.

This certificate is being prepared in compliance with Iowa Code Chapter 355.11 because:

- There is no certificate on file for this corner.
- There are no longer three valid ties of record.
- There are changes to reference ties of record.
- There is change of monumentation of record.
- To clarify description of record monument (ties).

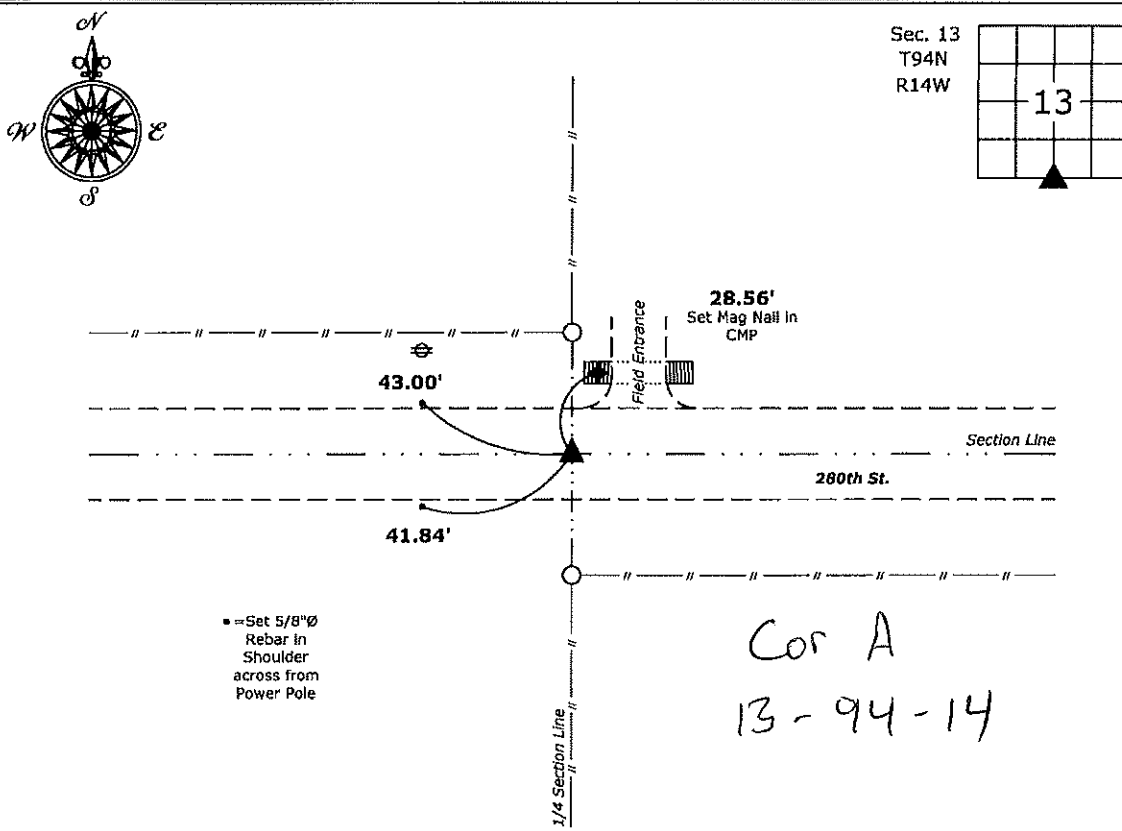
**Monument Description and Remarks:**

**South 1/4 Corner:** Found 5/8"Ø rebar with information obtained from the previously recorded Section Corner Certificate.

All of the previous ties were missing, established new ties in order to perpetuate the corner position.

### Plan View

(Show a minimum of three reference ties to durable physical objects, relevant monuments and physical conditions that will enable recovery of the corner.)



South 1/4 Corner of Section 13-94-14  
 Found 5/8"Ø rebar



I hereby certify that this land surveying document was prepared and the related survey work was performed by me or under my direct personal supervision and that I am a duly licensed Land Surveyor under the laws of the State of Iowa.

*Paul R. Herold* 1-28-19  
 Paul R. Herold Date:  
 License number 15525  
 My license renewal date is December 31, 2020.  
 Sheets covered by this seal: Individual sheet only

List Corner to be Indexed			
Corner	Section	Twp.	Range
S 1/4	13	94	14

Project Number: 2018-148  
 FB: Chickasaw 8, Pgs. 75-76

# UNITED STATES PUBLIC LAND SURVEY CORNER CERTIFICATE

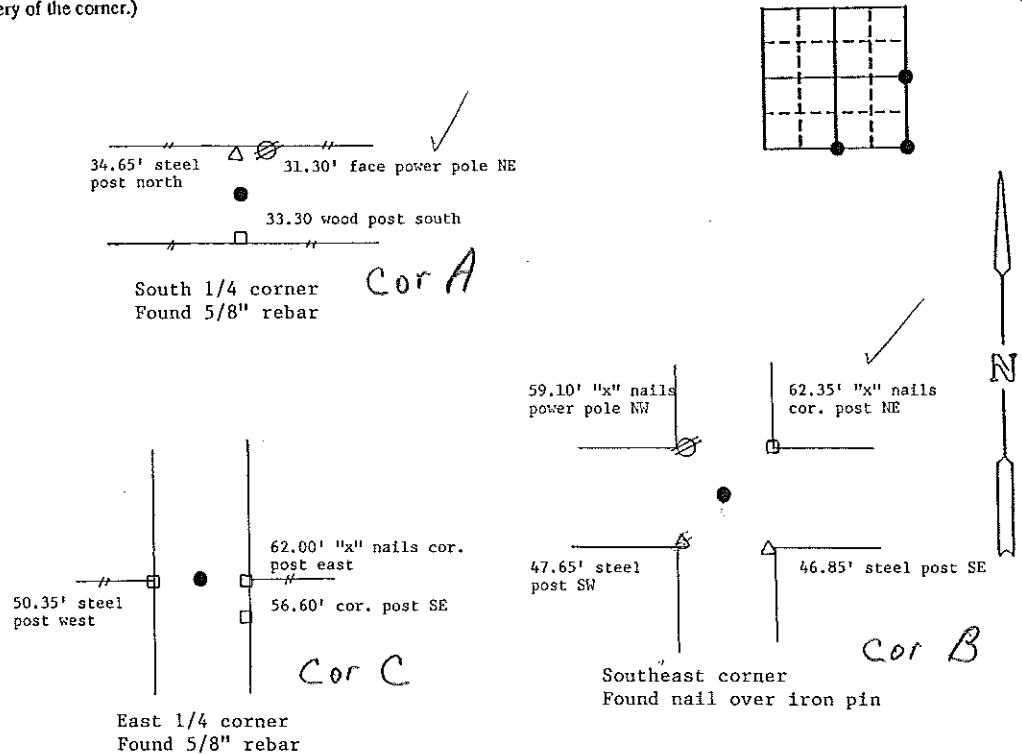
OF

Land Survey Monuments situated in Section 13, Township 94 North, Range 14 West, of the Fifth Principal Meridian, Chickasaw County, Iowa. Previously recorded in N/A in County Recorder's Office.

(Show reason for preparing this certificate, the evidence and detailed procedures used in establishing the corner positions and monumentation found or placed.)  
 Monument Description and Remarks: Found corners as listed below.

### PLAN - VIEW

(Show a minimum of three reference ties to durable physical objects, relevant monuments and physical conditions that will enable recovery of the corner.)



I hereby certify that the survey work was completed and this certificate was prepared by me or under my direct personal supervision and that I am a duly registered land surveyor under the laws of the state of Iowa.

Signature: Steve Busse  
 Name typed or printed: STEVE BUSSE  
 Date: 12/2/93 Reg. No. 9018

MY REGISTRATION IS SUBJECT TO RENEWAL DEC. 31, 1994

SEAL

Comers	List Corners to be Indexed Section	Twp	Range
SE cor.	13	94	14 B-13-94
South 1/4 cor.	13	94	14 A-13-94
East 1/4 cor.	13	94	14 C-13-94

*Placed in file book 12/13/93*