

UNITED STATES PUBLIC LAND SURVEY CORNER CERTIFICATE

OF

Land Survey Monuments situated in Section 26, Township 94 North, Range 1A West, of the Fifth Principal Meridian, CHICKASAW County, Iowa. Previously recorded in NONE in County Recorder's Office.

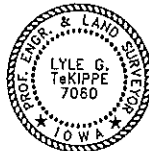
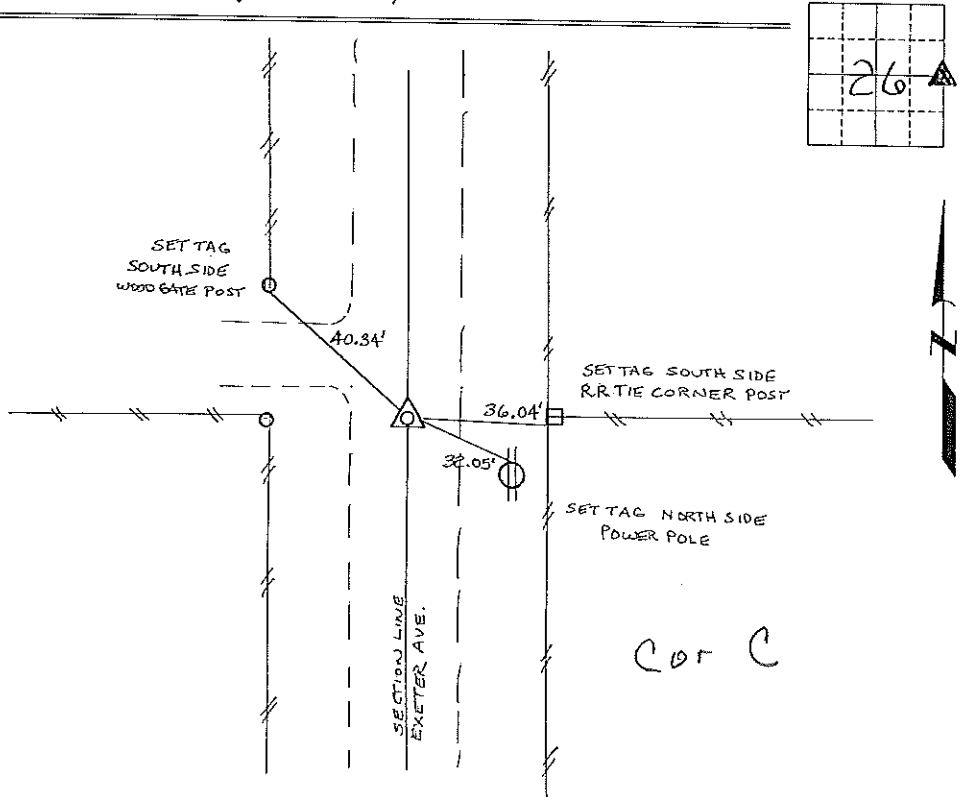
(book, page, document number, etc.)

(Show reason for preparing this certificate, the evidence and detailed procedures used in establishing the corner positions and monumentation found or placed.)

Monument Description and Remarks: E 1/4 CORNER SECTION 26 T 94 N R 1A W :
FOUND 1/2" Ø REBAR, FROM INFORMATION OBTAINED FROM THE COUNTY ENGINEERS OFFICE, IN FIELD BOOK "BRADFORD TWP. CORNER TIES."

PLAN - VIEW

(Show a minimum of three reference ties to durable physical objects, relevant monuments and physical conditions that will enable recovery of the corner.)



I hereby certify that this land surveying document was prepared and the related survey work was performed by me or under my direct personal supervision and that I am a duly licensed Land Surveyor under the laws of the State of Iowa.

Lyle G. TeKippe 8-22-97
Lyle G. TeKippe Date
License number 7080
My license renewal date is December 31, 1998.
Sheets covered by this seal: individual

Corners	Section	Twp.	Range
E 1/4	26	94 N	1A W
Cor C	26	94-14	

Placed in tie book 8/25/97

165-64

County Engineer's Office