

Section 23-94-14  
 As ref. to in  
 Engr Tie Book

TeKIPPE ENGINEERING, P.C., 128 South Vine Street, West Union, Iowa 52175 Phone (319) 422-5131

UNITED STATES PUBLIC LAND SURVEY CORNER CERTIFICATE

OF 23

Land Survey Monuments situated in Section 26, Township 94 North, Range 14 West, of the Fifth Principal Meridian, CHICKASAW County, Iowa. Previously recorded in NONE in County Recorder's Office.

(book, page, document number, etc.)

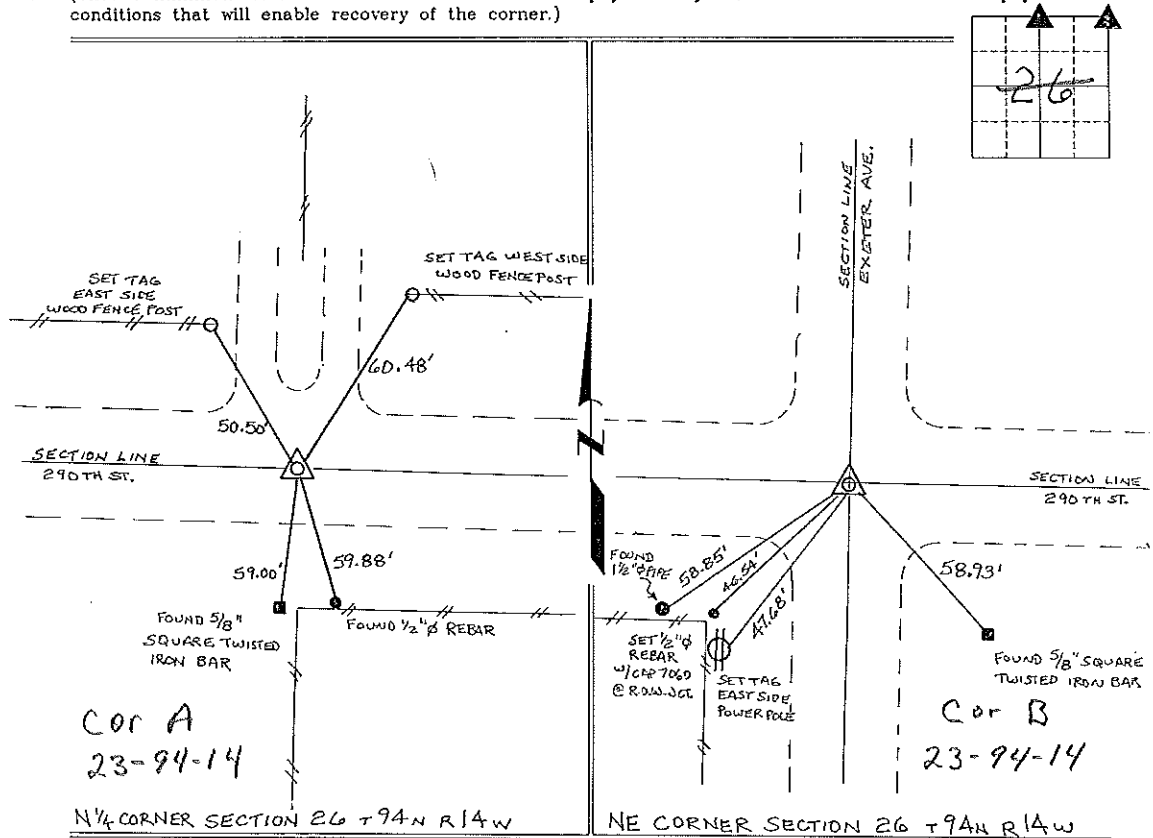
(Show reason for preparing this certificate, the evidence and detailed procedures used in establishing the corner positions and monumentation found or placed.)

Monument Description and Remarks: N 1/4 CORNER SECTION 26 T 94 N R 14 W: FOUND 1/2" Ø REBAR w/ CAP 10793, SHOWN AS SET ON A SURVEY AND PLAT MADE BY TERRY D. VAN LANINGHAM, RECORDED DECEMBER 27, 1995, DEEDS BOOK 157, PAGES 348-349.

NE CORNER SECTION 26 T 94 N R 14 W: FOUND 1/2" Ø REBAR FROM INFORMATION ON ABOVE SURVEY, NO SECTION CORNER CERTIFICATE ON FILE FOR EITHER CORNER.

PLAN - VIEW

(Show a minimum of three reference ties to durable physical objects, relevant monuments and physical conditions that will enable recovery of the corner.)

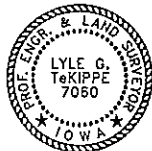


COR A  
 23-94-14

COR B  
 23-94-14

N 1/4 CORNER SECTION 26 T 94 N R 14 W

NE CORNER SECTION 26 T 94 N R 14 W



I hereby certify that this land surveying document was prepared and the related survey work was performed by me or under my direct personal supervision and that I am a duly licensed Land Surveyor under the laws of the State of Iowa.

*Lyle G. TeKippe* 8-22-97  
 Lyle G. TeKippe Date  
 License number 7080  
 My license renewal date is December 31, 1998.  
 Sheets covered by this seal: Individual

List Corners to be Indexed			
Corners	Section	Twp.	Range
N 1/4	26	94 N	14 W
Cor A	23-94-14		
NE	26	94 N	14 W
Cor B	23-94-14		

Placed in Tie Book 8/23/97

105-65

"County Engineer's Copy"