

Chickasaw Co. Recorder
 Cindy Messersmith
 Fee Book 2010-1489
 10/01/2010 @0419PM
 SCC SEC COR CERT # Pages: 1
 Book: Page: Total Fees: \$9.00

TeKIPPE ENGINEERING, P.C., 128 South Vine Street, West Union, Iowa 52176 Phone (563) 422-5131

UNITED STATES PUBLIC LAND SURVEY CORNER CERTIFICATE
 OF 34

Land Survey Monuments situated in Section 27, Township 94 North, Range 11 West of the Fifth Principal Meridian, Chickasaw County, Iowa.
 Previously recorded in none in County Recorder's Office.
 (book, page, document number, etc.)

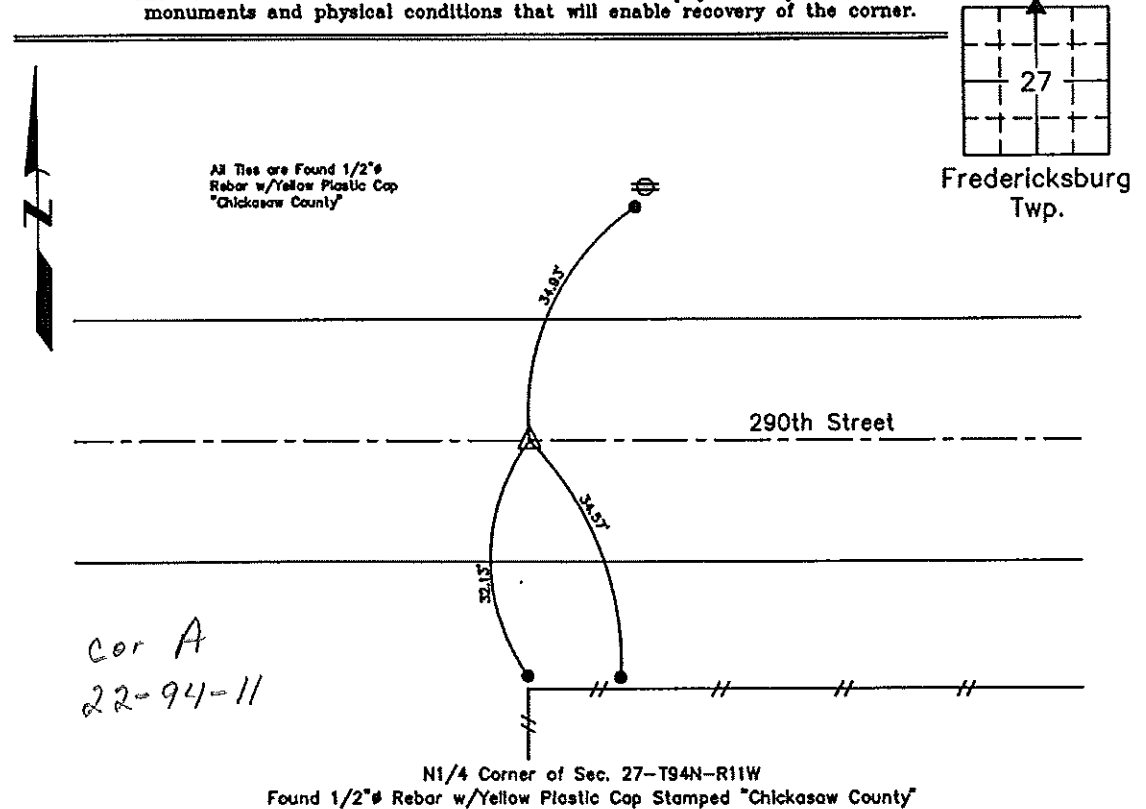
(Show reason for preparing this certificate, the evidence and detailed procedures used in establishing the corner positions and monumentation found or placed.)

Monument Description and Remarks: N1/4 Corner of Section 27-T94N-R11W:
 Found 1/2" # rebar with yellow plastic cap stamped Chickasaw County from ties on file in the Chickasaw County Engineer's office, New Hampton, Iowa. Accepted the found monument as the N1/4 Corner of the Section.

PLAN VIEW

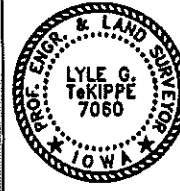
Project Number 101008LS
 Field Book: 46M, Page 71

Show a minimum of three reference ties to durable physical objects, relevant monuments and physical conditions that will enable recovery of the corner.



Cor A
 22-94-11

N1/4 Corner of Sec. 27-T94N-R11W
 Found 1/2" # Rebar w/Yellow Plastic Cap Stamped "Chickasaw County"

 <p>I hereby certify that this land surveying document was prepared and the related survey work was performed by me or under my direct personal supervision and that I am a duly licensed Land Surveyor under the laws of the State of Iowa.</p> <p><i>Lyle G. TeKippe</i> 9-29-10 Lyle G. TeKippe Date</p> <p>License Number 7060 My license renewal date is December 31, 2010. Sheets covered by this seal: Individual</p>	List Corners to be Indexed										
	<table border="1"> <thead> <tr> <th>Corners</th> <th>Section</th> <th>Twp.</th> <th>Range</th> </tr> </thead> <tbody> <tr> <td>N1/4</td> <td>27</td> <td>94N</td> <td>11W</td> </tr> </tbody> </table>	Corners	Section	Twp.	Range	N1/4	27	94N	11W		
Corners	Section	Twp.	Range								
N1/4	27	94N	11W								

X:\Section Corners\Sec. 27\27-94-11C.dwg

Section 22-94-14
 As ref. to in
 Engr. Tie Book

FILED 2003-2345
 RECORDER'S OFFICE
 CHICKASAW COUNTY, IOWA
 2003 JUL 25 AM 9 07
 CINDY MESSERSMITH
 COUNTY RECORDER

TEKIPPE ENGINEERING, P.C., 128 South Vine Street, West Union, Iowa 52176 Phone (563) 422-5131

UNITED STATES PUBLIC LAND SURVEY CORNER CERTIFICATE

OF 22
 Land Survey Monuments situated in Section 27, Township 94 North, Range 14 West of the Fifth Principal Meridian, CHICKASAW County, Iowa.
 Previously recorded in none in County Recorder's Office.
(book, page, document number, etc.)

(Show reason for preparing this certificate, the evidence and detailed procedures used in establishing the corner positions and monumentation found or placed.)

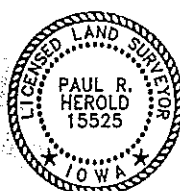
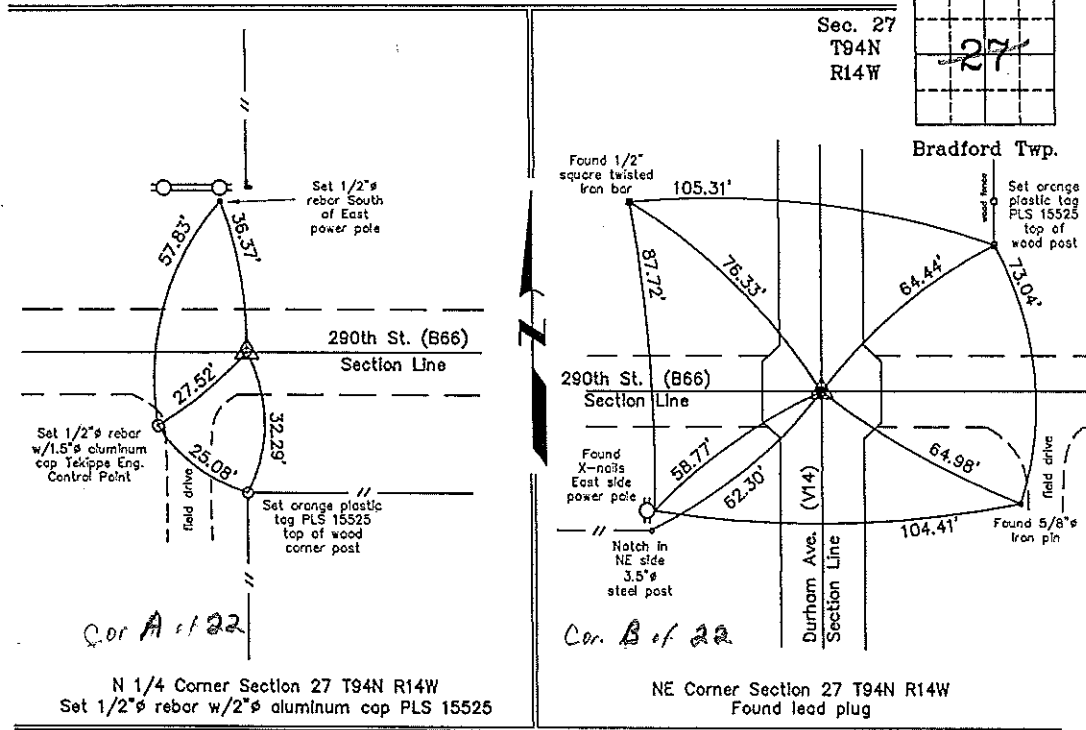
Monument Description and Remarks: N 1/4 Section 27 T94N R14W: Set 1/2" rebar w/2" aluminum cap PLS 15525 on the centerline of the county road on a line between the 1/4 Section Line fences.

NE Corner Section 27 T94N R14W: Found lead plug with information obtained from the Chickasaw County Engineer's Office in Field Book Bradford Twp. Corner Ties, Section 22, Corner 'B'.

PLAN - VIEW

Project Number 08140.LS
 FB. 48K PG. 13-14

(Show a minimum of three reference ties to durable physical objects, relevant monuments and physical conditions that will enable recovery of the corner.)



I hereby certify that this land surveying document was prepared and the related survey work was performed by me or under my direct personal supervision and that I am a duly licensed Land Surveyor under the laws of the State of Iowa.

Paul R. Harold 7-24-03
 Paul R. Harold Date
 License number 15525
 My license renewal date is December 31, 2004.
 Sheets covered by this seal: Individual

List Corners to be Indexed			
Corners	Section	Twp.	Range
N 1/4	27	94N	14W
NE	27	94N	14W

Filed 7-28-03
 X:\Section Corners\Sec. 27\27-94-14ce.dwg

County Engineer's
 Copies