

Instrument #: 2018-1916
 11/21/2018 09:43:44 AM Total Pages: 1
 SCC SECTION CORNER CERTIFICATES
 Recording Fee: \$ 7.00
 Shirley Troyna, Recorder, Chickasaw County Iowa



Prepared by & Return to: Herold - Reicks Surveying, 10 East Main Street, New Hampton, IA 50659, Ph. 641-334-2725

United States Public Land Survey Corner Certificate

Land Survey Monument situated in
 Section 23, Township 94 North, Range 14 West of the Fifth Principal Meridian, Chickasaw County, Iowa.
 On file in Document #2008-1680 in the County Recorder's office.

This certificate is being prepared in compliance with Iowa Code Chapter 355.11 because:

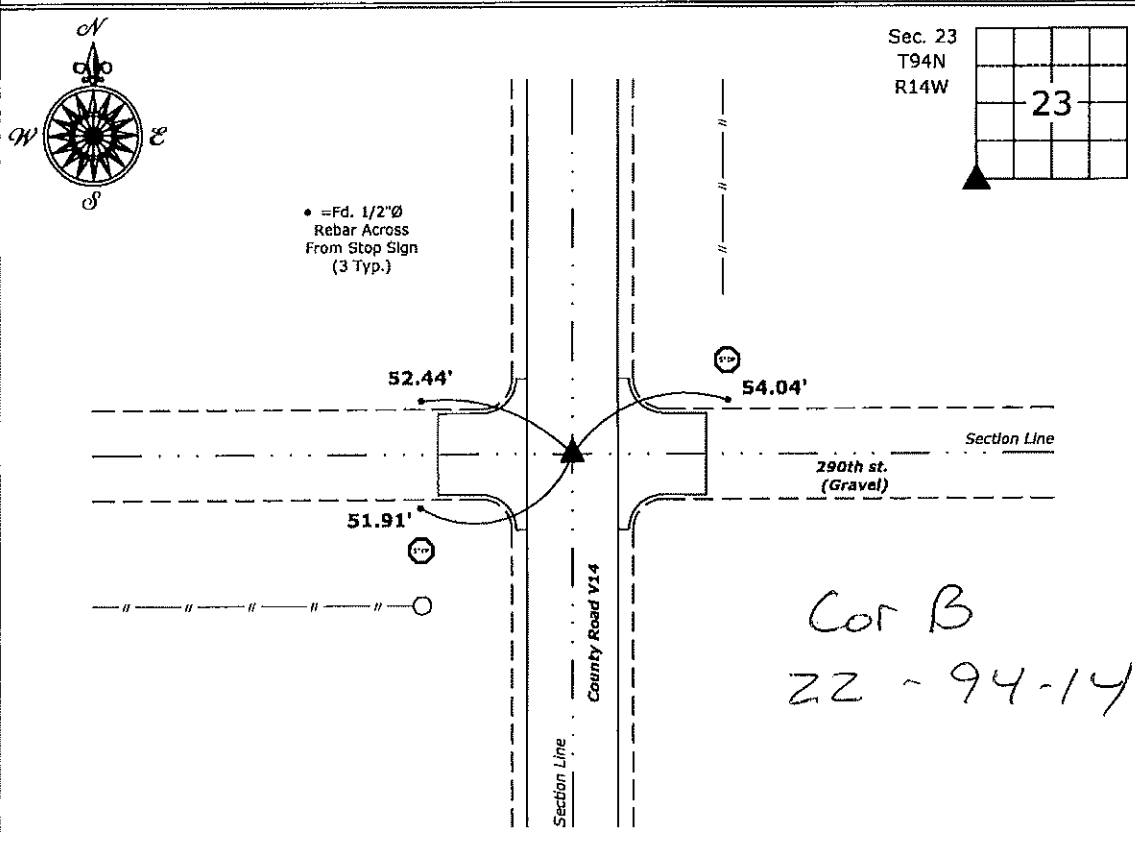
- There is no certificate on file for this corner.
- There are no longer three valid ties of record.
- There are changes to reference ties of record.
- There is change of monumentation of record.
- To clarify description of record monument (ties).

Monument Description and Remarks:

Southwest Corner: Found Lead Plug and Cut "X" with information obtained from the previously recorded Section Corner Certificate. Reset 1"Ø Bronze Survey Marker PLS 19211 with coordinates obtained prior to highway reconstruction. Corner was reset in conjunction with Project No. FM-CO19(88)--55-19.

Plan View

(Show a minimum of three reference ties to durable physical objects, relevant monuments and physical conditions that will enable recovery of the corner.)



Southwest Corner of Section 23-94-14
 Set 1"Ø Bronze Survey Marker PLS 19211



I hereby certify that this land surveying document was prepared and the related survey work was performed by me or under my direct personal supervision and that I am a duly licensed Land Surveyor under the laws of the State of Iowa.
Kirk D. Reicks 11-20-18
 Kirk D. Reicks Date:
 License number 19211
 My license renewal date is December 31, 2018.
 Sheets covered by this seal: Individual sheet only

List Corner to be Indexed			
Corner	Section	Twp.	Range
SW	23	94	14
Project Number: 2018-805			
FB: Chickasaw 8, Pgs. 72			

File: S:_CSD Projects\County Systems\CHICKASAW\CHICK-46.dwg, 11/20/2018 12:50:06 PM

Chickasaw Co. Recorder
 Cindy Messersmith
Fee Book 2008-1680
 09/02/2008 @11:27AM
 SCC: SEC COR CERT
 Book: Page: # Pages: 1
 Total Fees: \$7.00

Section 14-94-14
 As ref. to in
 Engr. Tie Book

Herold - Recks Surveying, 25 1/2 East Main Street, Suite 204, New Hampton, IA 50659, Ph. 641-394-2725

UNITED STATES PUBLIC LAND SURVEY CORNER CERTIFICATE

Land Survey Monuments situated in Section 23, Township 94 North, Range 14 West of the Fifth Principal Meridian, Chickasaw County, Iowa., 2.) previously recorded as Doc. #2005-1081, in the Chickasaw County Recorder's office, 1.) Previously not recorded.

This certificate is being prepared in compliance with Iowa Code Chapter 355.11 because:

- 1. There is no certificate on file for this corner.
- 2. There are no longer three valid ties of record.
- There are changes to reference ties of record.
- There is change of monumentation of record.
- 2. To clarify description of record monument (ties).

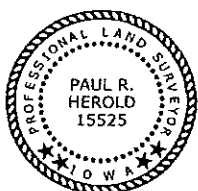
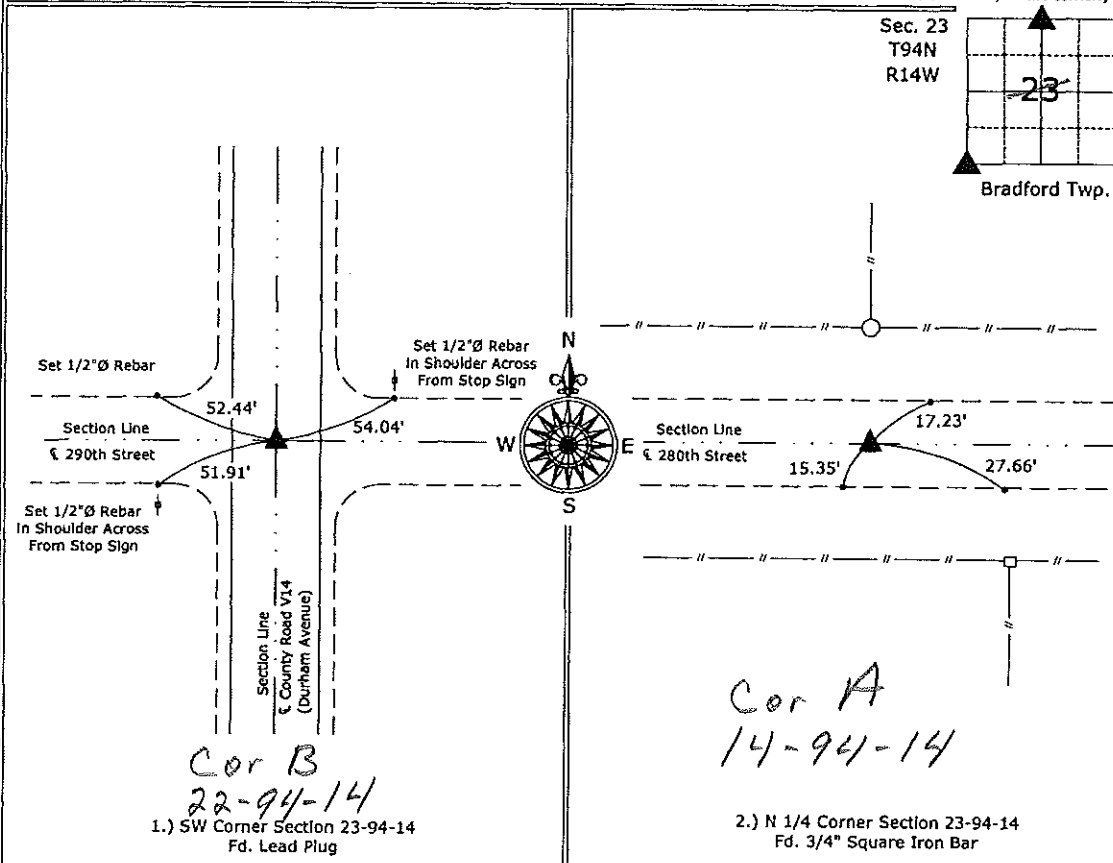
Monument Description and Remarks:

1.) SW Corner Section 23-94-14: Fd. Lead Plug from information obtained from the County Engineer's Office in Field Book, Bradford Twp. Corner Ties, Section 22, Corner "B", Note: the Lead Plug is beneath a large tar patch on Centerline.

2.) N 1/4 Corner Section 23-94-14: Fd. 3/4" Square Iron Bar from information on the previous Section Corner Certificate, the monument does not match the description on the previous certificate, that description stated that it was a 1/2"Ø Iron Pin, the top of the monument could be mistaken for that, however after close examination that description was found to be incorrect, the distances to adjacent corners confirm the monument, however all of the ties on the previous certificate have been destroyed, established three new ties.

PLAN - VIEW

(Show a minimum of three reference ties to durable physical objects, relevant monuments and physical conditions that will enable recovery of the corner.)



I hereby certify that this land surveying document was prepared and the related survey work was performed by me or under my direct personal supervision and that I am a duly licensed Land Surveyor under the laws of the State of Iowa.

Paul R. Herold 8-29-08
 Paul R. Herold Date:

License number 15525
 My license renewal date is December 31, 2008.
 Sheets covered by this seal: Individual sheet only

List Corners to be Indexed			
Corners	Section	Twp.	Range
SW	23	94	14
N 1/4	23	94	14

Project Number: 2008-085
 FB: Chickasaw County 1, Pgs. 76-77

File: S:\Projects\2008\2008-085\dwg\2008-085.dwg, 8/18/2008 10:00:37

Section 22-94-14
 As ref. to in
 Engr. Tie Book

FILED 2003-2345
 RECORDER'S OFFICE
 CHICKASAW COUNTY, IOWA
 2003 JUL 25 AM 9 07
 CINDY MESSERSMITH
 COUNTY RECORDER

TekIPPE ENGINEERING, P.C., 128 South Vine Street, West Union, Iowa 52176 Phone (563) 422-5131

UNITED STATES PUBLIC LAND SURVEY CORNER CERTIFICATE

OF 22
 Land Survey Monuments situated in Section 27, Township 94 North, Range 14 West of the Fifth Principal Meridian, CHICKASAW County, Iowa.
 Previously recorded in none in County Recorder's Office.
 (book, page, document number, etc.)

(Show reason for preparing this certificate, the evidence and detailed procedures used in establishing the corner positions and monumentation found or placed.)

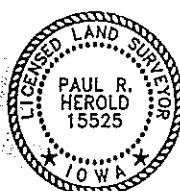
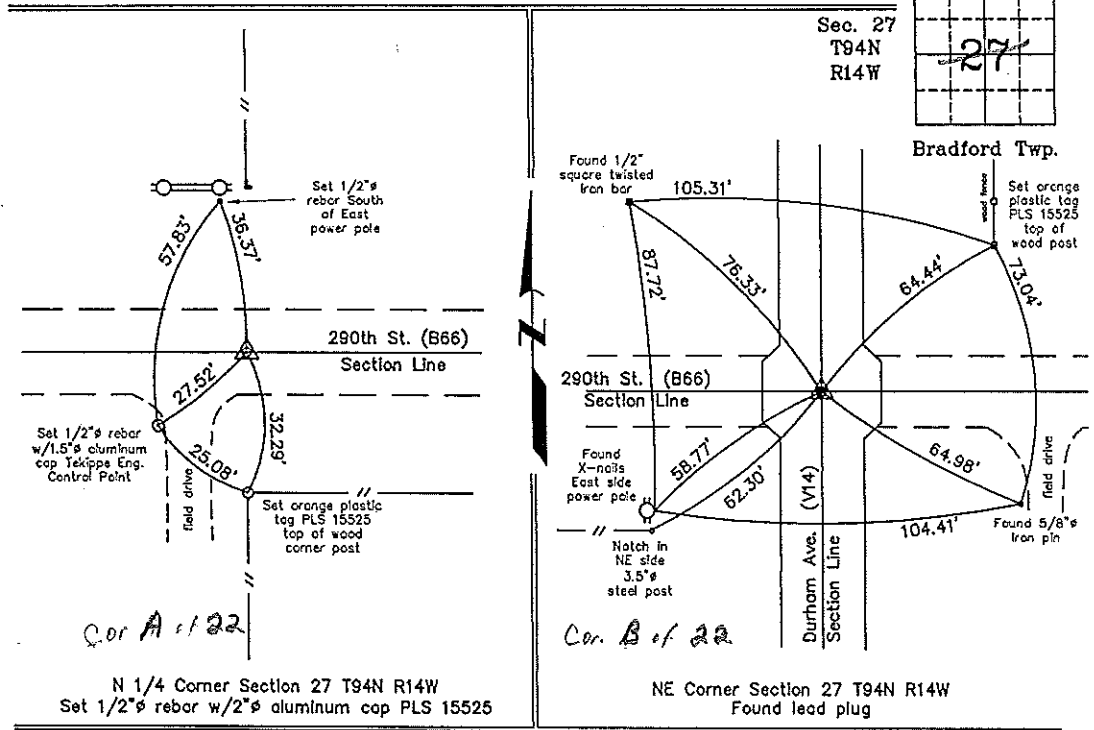
Monument Description and Remarks: N 1/4 Section 27 T94N R14W: Set 1/2" rebar w/2" aluminum cap PLS 15525 on the centerline of the county road on a line between the 1/4 Section Line fences.

NE Corner Section 27 T94N R14W: Found lead plug with information obtained from the Chickasaw County Engineer's Office in Field Book Bradford Twp. Corner Ties, Section 22, Corner 'B'.

PLAN - VIEW

Project Number 08140.LS
 FB. 48K PG. 13-14

(Show a minimum of three reference ties to durable physical objects, relevant monuments and physical conditions that will enable recovery of the corner.)



I hereby certify that this land surveying document was prepared and the related survey work was performed by me or under my direct personal supervision and that I am a duly licensed Land Surveyor under the laws of the State of Iowa.
 Paul R. Harold Date 7-24-03
 License number 15525
 My license renewal date is December 31, 2004.
 Sheets covered by this seal: Individual

List Corners to be Indexed			
Corners	Section	Twp.	Range
N 1/4	27	94N	14W
NE	27	94N	14W

Filed 7-28-03
 X:\Section Corners\Sec. 27\27-94-14ce.dwg

County Engineer's
 Copies