

Section 21-94-14
 As ref. to in
 Engg. Tie Book

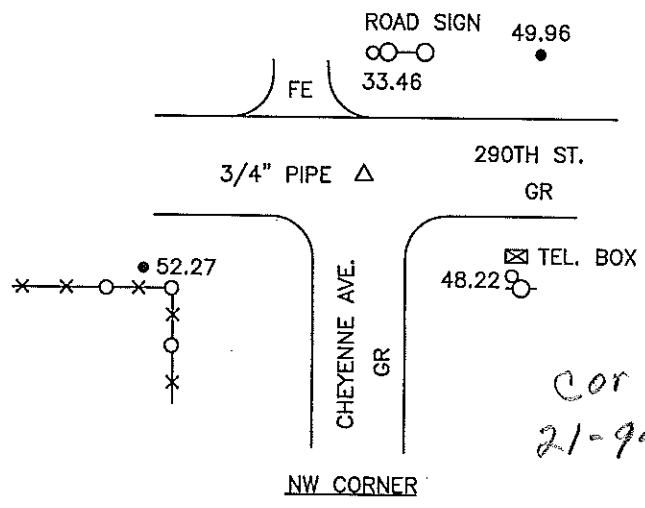
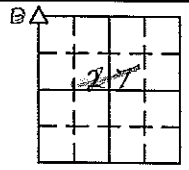
PREPARED BY: DARYL EIFFLER, 215 N ADAMS, MASON CITY, IOWA 50401, 641-424-6344

UNITED STATES PUBLIC LAND SURVEY CORNER CERTIFICATE OF

Land Survey Monuments situated in Section 27²¹, Township 94 NORTH, Range 14 WEST, of the Fifth Principal Meridian, CHICKASAW County, Iowa
 Previously recorded in DOES NOT APPLY in County Recorder's Office.
(book, page, document number, etc.)

Monument Description and Remarks: NO CERTIFICATE OF RECORD FOR THIS CORNER.
NW CORNER - SET 3/4" PIPE USING CHICKASAW ENGINEERING DEPT. REFERENCE TIES.
SET ADDITIONAL TIES AS SHOWN.

PLAN - VIEW



cor B
 21-94-14

LEGEND

- - UTILITY POLE
- x-x-○-x- - EXISTING FENCE, FENCE POST
- ▲ - FOUND LAND CORNER
- △ - SET LAND CORNER
- - FOUND 1/2" SQUARE PIN
- - SET REFERENCE TIES ARE A BRASS DISK STAMPED RLS 13804 UNLESS NOTED
- SRP - SURVEY REFERENCE POINT
- ACC - ASPHALT CEMENT CONCRETE SURFACING
- PCC - PORTLAND CEMENT CONCRETE SURFACING
- GR - GRAVEL SURFACING

YAGGY COLBY ASSOCIATES
 ENGINEERS • ARCHITECTS
 SURVEYORS • PLANNERS
 LANDSCAPE ARCHITECTS
 215 NORTH ADAMS
 MASON CITY, IOWA 50401
 641-424-6344
 641-424-0351

FILE 941427

I HEREBY CERTIFY THAT THIS LAND SURVEYING DOCUMENT WAS PREPARED BY ME OR UNDER MY DIRECT PERSONAL SUPERVISION AND THAT I AM A DULY LICENSED LAND SURVEYOR UNDER THE LAWS OF THE STATE OF IOWA.

Daryl Effler
 DARYL EIFFLER

DATE: 12/22/00 LICENSE NO. 13804
 MY LICENSE RENEWAL DATE IS DECEMBER 31, 2000

SEAL

PROJECT NO. 7036

Corners	List Corners to be Indexed		
	Section	Twp	Range
NW	27	94N	14W
B	21	94	14

Filed 3-20-01

2000-2310