

Chickasaw Co. Recorder
 Cindy Messersmith
Fee Book 2016-1733
 12/27/2016 @0932AM
 SCC SEC COR CERT # Pages: 1
 Book: Page: \$7.00
 Total Fees:

PREPARED BY: BRIAN J. DIEHL LS 13844 10 SUMAC MASON CITY, IOWA 50401 -- (641) 512-8004

SLSI 9-00

UNITED STATES PUBLIC LAND SURVEY CORNER CERTIFICATE

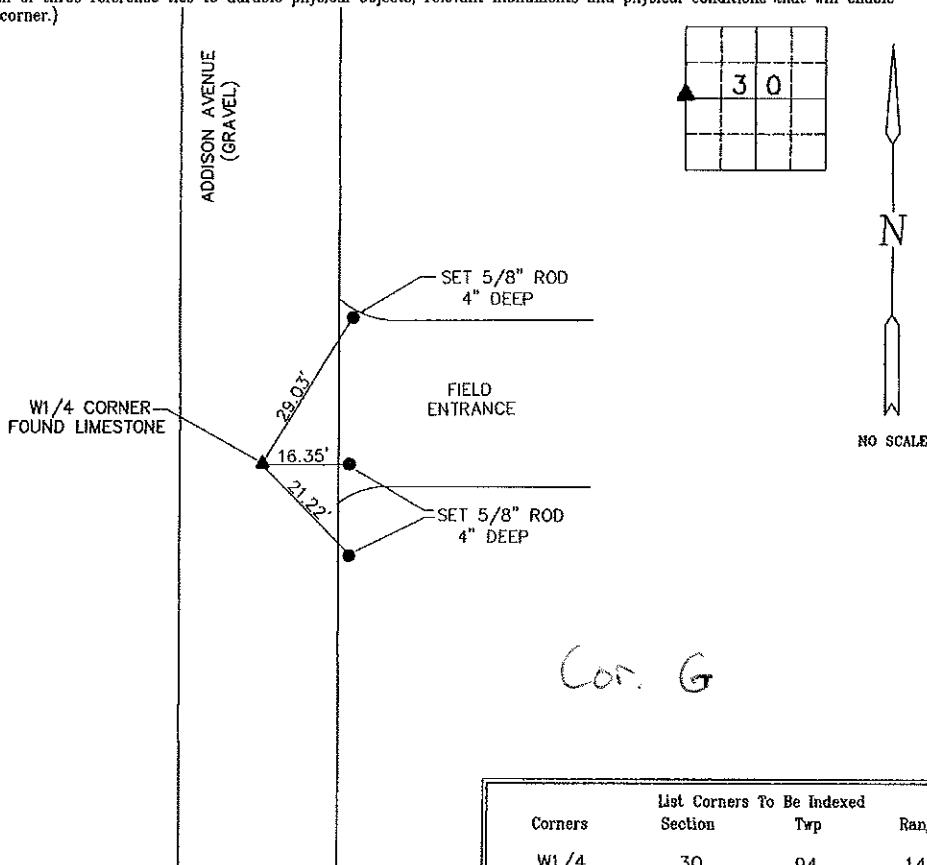
Land Survey Monuments Situated in Section 30, Township 94N, Range 14W, of the Fifth Principle Meridian, CHICKASAW County, Iowa
 Previously Recorded in NO RECORD CERTIFICATE in County Recorder's Office
(book, page, document number, etc.)

(Show reason for preparing this certificate, the evidence and detailed procedures used in establishing the corner positions and monumentation found or placed.)

Monument Description and Remarks: W1/4 CORNER - FLOYD AND CHICKASAW
COUNTIES BOTH SHOW STONE FOR CORNER BUT LOCATION NOT DETERMINED.
LOCATED SW CORNER AND NW CORNER. SPLIT DISTANCE AND DUG 2' X 4"
HOLE 1.5' DEEP. PROBED AND FOUND CHISELED LIMESTONE 3.5' DEEPER.
PAINTED HIGH POINT AND SET 5/8" ROD WITH BLUE L.S. CAP NO 13644
OVER STONE. ROD IS 0.6' DEEP.

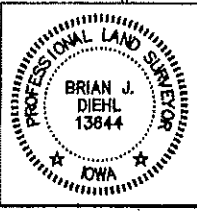
PLAN-VIEW

(Show a minimum of three reference ties to durable physical objects, relevant monuments and physical conditions that will enable recovery of the corner.)



Corners	List Corners To Be Indexed		
	Section	Trp	Range
W1/4	30	94	14

BRIAN J. DIEHL, P.L.S.
 LAND SURVEYING SERVICES
 10 SUMAC
 MASON CITY, IA 50401
 641-512-8004
 brianjdiehlpls@gmail.com



I hereby certify that this land surveying document was prepared and the related survey work was performed by me or under my direct personal supervision and that I am a duly licensed Professional Land Surveyor under the laws of the State of Iowa.

[Signature]
 Brian J. Diehl
 License number 13844
 Date December 23, 2016
 My license renewal date is December 31, 2017
 Sheets covered by this set: 1

Section 24-94-14
 As ref. to in
 Engg. Tie Book

SLSI 9-90

UNITED STATES PUBLIC LAND SURVEY CORNER CERTIFICATE

OF 24

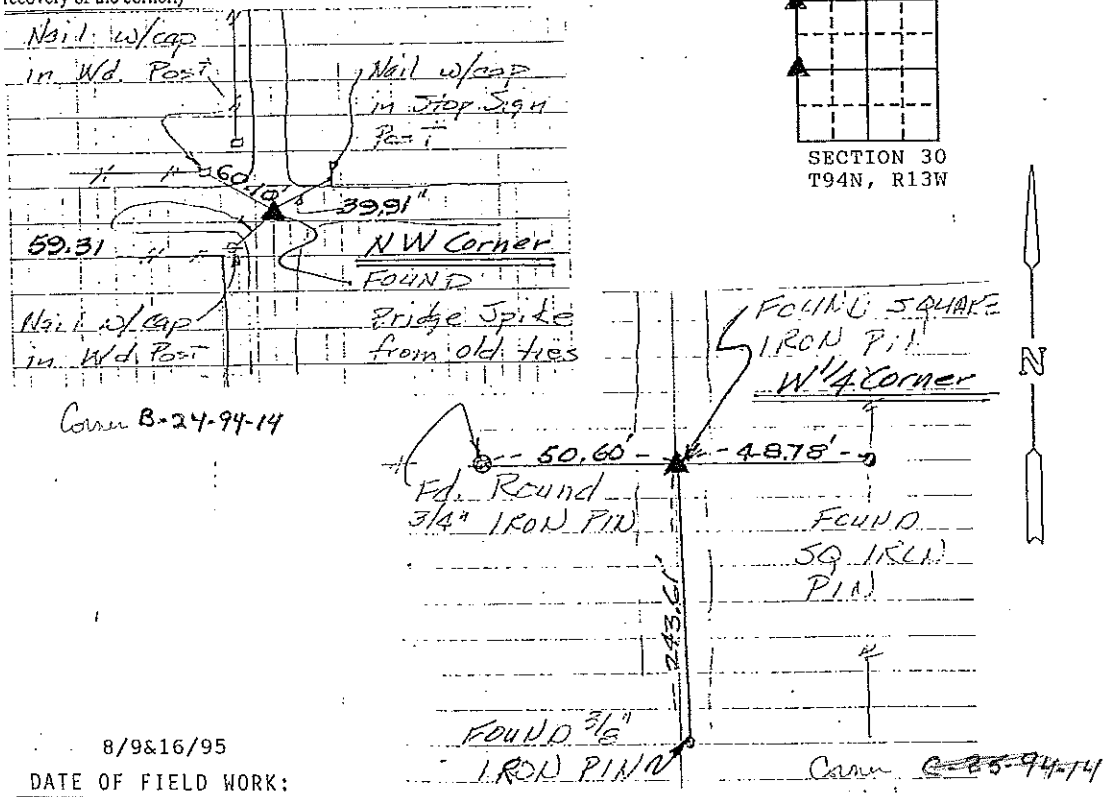
Land Survey Monuments situated in Section Thirty (30), Township 94 North, Range 13 West, of the Fifth Principal Meridian, Chickasaw County, Iowa. Previously recorded in _____ in County Recorder's Office.

(Show reason for preparing this certificate, the evidence and detailed procedures used in establishing the corner positions and monumentation found or placed.)

Monument Description and Remarks: Found bridge spike at NW Corner using ties from County Engineer's Office. Found square iron pin and ties at W 1/4 Corner.

PLAN - VIEW

(Show a minimum of three reference ties to durable physical objects, relevant monuments and physical conditions that will enable recovery of the corner.)

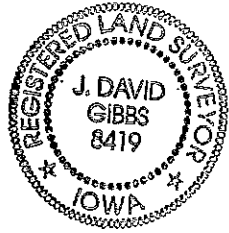


8/9&16/95
 DATE OF FIELD WORK:

I hereby certify that the survey work was completed and this certificate was prepared by me or under my direct personal supervision and that I am a duly registered land surveyor under the laws of the state of Iowa.
 Signature: J. David Gibbs
 Name typed or printed: J. David Gibbs
 Date: 8/22/95 Reg. No. 8419

Corners	Section	Twp	Range
NW	30	94N	13W
W 1/4	30	94N	13W

Err C 25-94-14



SEAL

Placed in
 tie book 8/24/95