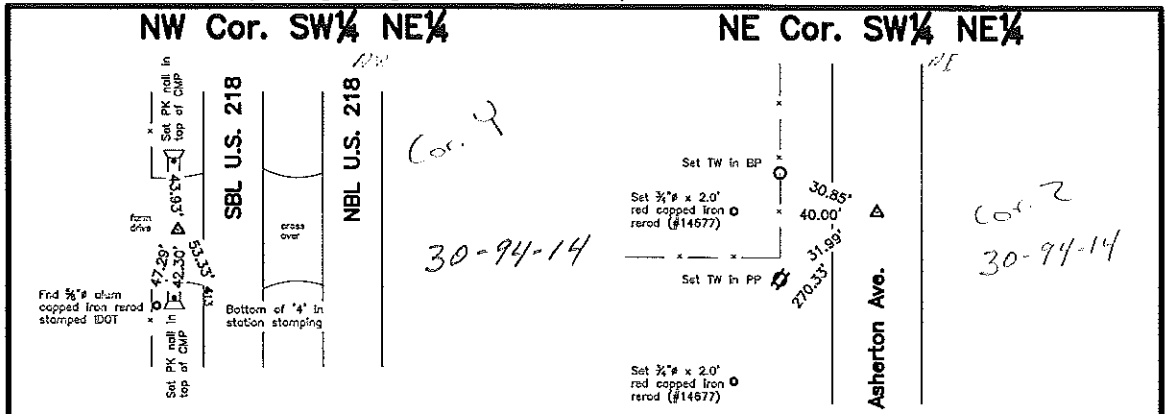


2009-1312



Monument Description, Remarks, and Plan View:

NW Cor. SW 1/4 NE 1/4 - History of Corner =
 1999, May 21 - 'Calculated Position' per Co Rec's Book 171 Page 456.
 2008, Dec. 22 - Preliminary Plat of Smith's Country Acres Addition indicates usage of corner, but not type of monumentation.
 Previous and current Co Engr's ties do not indicate that corner is monumented.

Corner Recovery =
 Searched area with a metal detector and found nothing. Since there is no available County record of this corner being monumented, set a 3/4" x 4.0' aluminum capped iron rerod (#14677) stamped '1/4-1/4 COR' at point on-line and equidistance between the NE 1/4 Corner and the Center and used it as the correct corner. Rerod is flush. All ties are plumb distance.

This certificate is being prepared because there are no certificates on file for this corner.

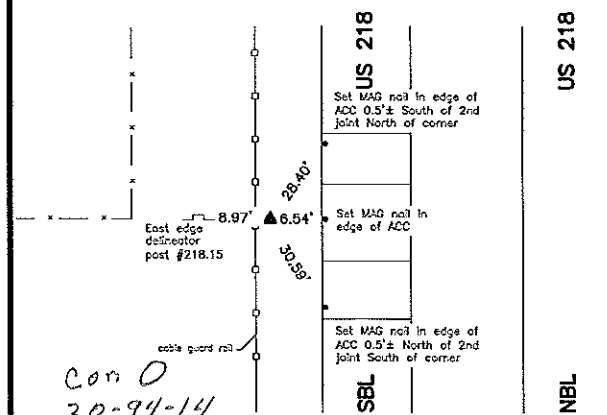
Monument Description, Remarks, and Plan View:

NE Cor. SW 1/4 NE 1/4 - History of Corner =
 1999, May 21 - 'Calculated Position' per Co Rec's Book 171 Page 456.
 2008, Dec. 22 - Preliminary Plat of Smith's Country Acres Addition indicates usage of corner, but not type of monumentation.
 Previous and current Co Engr's ties do not indicate that corner is monumented.

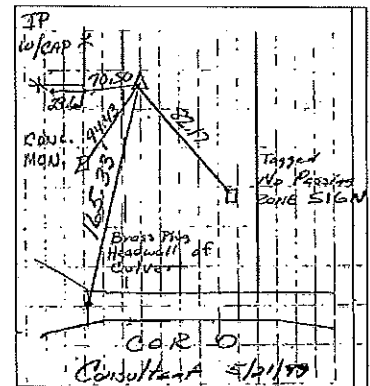
Corner Recovery =
 Searched area with a metal detector and found nothing. Since there is no available County record of this corner being monumented, set a 'Survey Mark' nail at the intersection of straight lines between opposite 1/4-1/4 corners of the NE 1/4 and used it as the correct corner. Nail is in apparent centerline of traveled surface of ACC road North-South and 4.5' North of fenceline West. All ties are plumb distance.

This certificate is being prepared because there are no certificates on file for this corner.

Center



CO ENGR'S RECORD TIES



Monument Description, Remarks, and Plan View:

Center - History of Corner =
 1958, Feb. 27 - Property Plat of Co Road Proj. F-76(4) in Co Aud's file indicates usage of corner but not type of monumentation.
 1958, Mar. 4 - Property Plat of Co Road Proj. F-76(4) in Co Aud's file indicates usage of corner but not type of monumentation.
 1958, Mar. 6 - Property Plat of Co Road Proj. F-76(4) in Co Aud's file indicates usage of corner but not type of monumentation.
 1958, Mar. 13 - Property Plat of Co Road Proj. F-76(4) in Co Aud's file indicates usage of corner but not type of monumentation.
 1966, Feb. - Strip Map for Hwy 218 in Co Aud's file indicates usage of corner but not type of monumentation.
 1991, Sep. 16 - Co Rec's Book 148 Pages 120 and 195 indicates usage of corner but not type of monumentation.
 1997, Aug. 25 - 'Fd. 5/8" rebar' per Iowa DOT District 2 Office Field Book Page 3.
 1999, May 21 - 'Fd. 5/8" Iron Pin' per Co Rec's Book 171 Page 456.
 1999, May 21 - 'Found 3/4" iron pin' per Co Rec's Book 171 Page 461.
 2000, Dec. 21 - 'FOUND 5/8" REBAR' per Co Rec's Doc. #2001-1276.
 2001, Jun. 7 - 'FOUND 5/8" REBAR' per Co Rec's Doc. #2001-2461.
 2005, Sep. - 'SET 5/8" IRON PIN' per unrecorded U.S.P.L.S. Cor. Cert. by L.S. 10898 obtained from Iowa DOT District 2 Office.
 2008, Dec. 22 - Preliminary Plat of Smith's Country Acres Addition indicates usage of corner, but not type of monumentation.
 Previous Co Engr's ties do not indicate that corner is monumented.
 Current Co Engr's ties indicate that corner is monumented with 'found 3/4" IP' on May 21, 1999 with ties as shown above.

Corner Recovery =
 Searched area with a metal detector, excavated a 1.0' x 1.5' deep hole. Found an orange painted 5/8" iron rerod, 1.3' deep at 20.5' West of apparent centerline seam of ACC road South (SBL US 218) and in-line with fenceline West. Location of monument found matches that of unrecorded certificates, monument found matches that of unrecorded certificate. Therefore, used rerod as the correct corner. All ties are plumb distance.

This certificate is being prepared because there are no longer three valid ties of record and there is a change to monumentation of record.

Legend

- BC = Nail with Bottle Cap
- BP = Brace Post
- CP = Corner Post
- CMP = Corrugated Metal Pipe
- CM = 4" Sq Concrete Monument with 1/2" Iron rerod in center (tie to rerod)
- CX = Cut 'X'
- GP = Gate Post
- ID = Inside Diameter
- OD = Outside Diameter
- PP = Power Pole
- PW = Nail with Plastic Washer
- RCP = Reinforced Concrete Pipe
- RH = Red Head (Nail in wire)
- ROW = Right of Way
- RW = Nail with Reflective Round Washer
- R/W = Iron ROW Nail
- SFP = Steel 'T' Post
- SW = Nail with Square Metal Washer
- TP = Telephone Pedestal
- TW = Nail with Round Metal Washer
- WFP = Wood Fence Post
- X = X Nails



UNITED STATES PUBLIC LAND SURVEY CORNER CERTIFICATE

OF

Land Survey Monuments situated in Section 30, Township 94 North, Range 14 West, of the Fifth Principal Meridian, CHICKASAW County, Iowa.

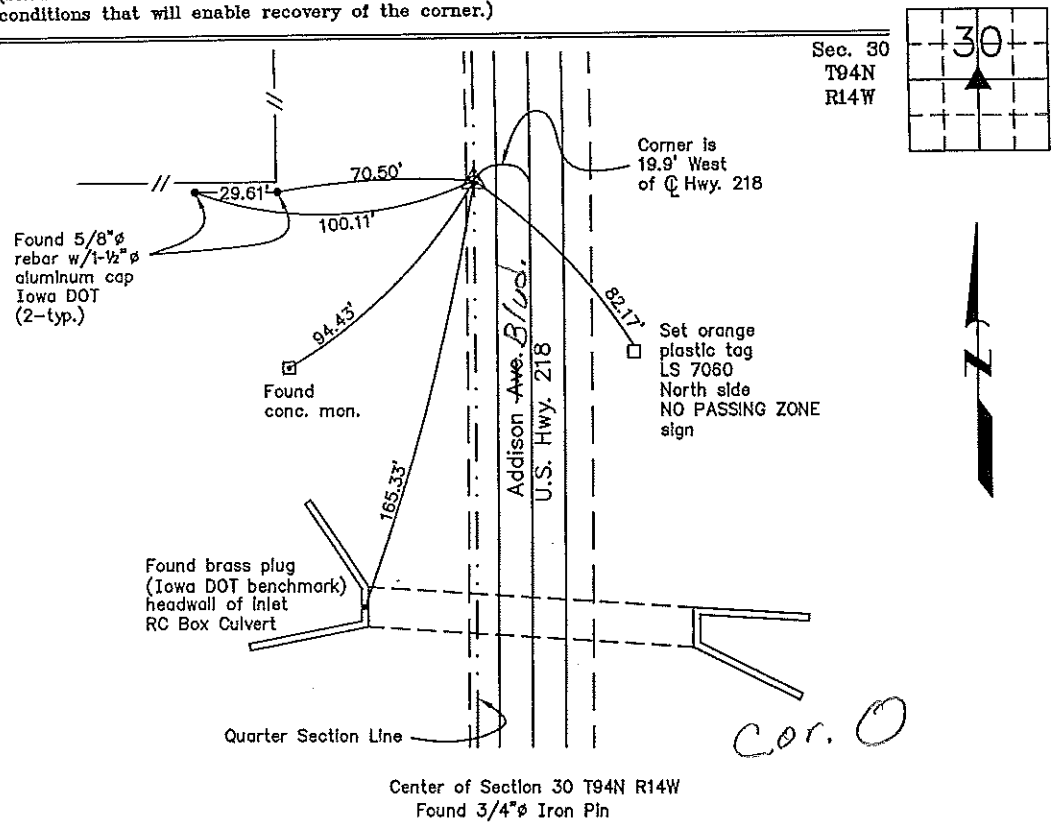
Previously recorded in none in County Recorder's Office.
(book, page, document number, etc.)

(Show reason for preparing this certificate, the evidence and detailed procedures used in establishing the corner positions and monumentation found or placed.)

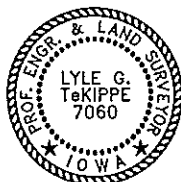
Monument Description and Remarks: Center of Section 30 T94N R14W: Found 3/4" ϕ iron pin with information obtained from Iowa Department of Transportation as-built plans for U.S. Hwy. 218 Project #F 76 (1).

PLAN - VIEW

(Show a minimum of three reference ties to durable physical objects, relevant monuments and physical conditions that will enable recovery of the corner.)



Center of Section 30 T94N R14W
Found 3/4" ϕ Iron Pin



I hereby certify that this land surveying document was prepared and the related survey work was performed by me or under my direct personal supervision and that I am a duly licensed Land Surveyor under the laws of the State of Iowa.

Lyle G. TeKippe 5-21-99
Lyle G. TeKippe Date
License number 7060
My license renewal date is December 31, 2000.
Sheets covered by this seal: Individual

List Corners to be Indexed			
Corners	Section	Twp.	Range
Center	30	94N	14W

Corner O 30-94-14
Placed in tie Book
5/26/99

171-461

County Engineer's Copy