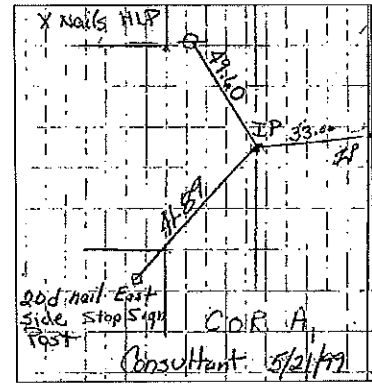
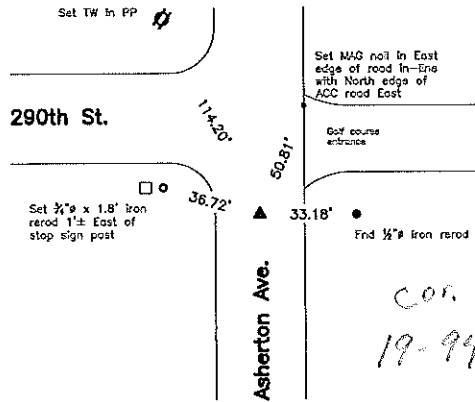


2009-1312

Sec. 19-94-14  
As ref. to in  
Engr Tie Book

### NE Cor. NW¼ NE¼

### CO ENGR'S RECORD TIES



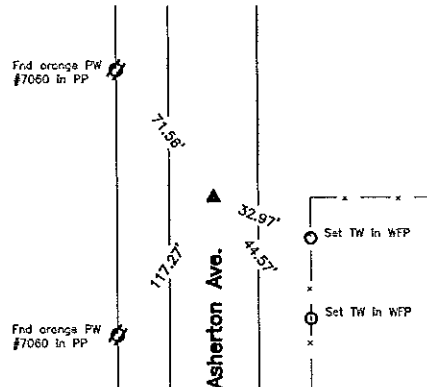
#### Monument Description, Remarks, and Plan View:

NE Cor. NW¼ NE¼ - History of Corner =  
 1998, Feb - 'Fd. hinge nail' per Iowa DOT District 2 Office Field Book Page 6.  
 1999, May 21 - 'Fd. Hinge Nail' per Co Rec's Book 171 Page 456.  
 1999, May 21 - 'Found hinge nail' per Co Rec's Book 171 Page 460.  
 2000, Aug. 28 - 'Fd. Hinge Nail' per Co Rec's Doc. #2000-1801.  
 2000, Oct. 31 - 'FOUND HINGE NAIL' per Co Rec's Doc. #2000-2207.  
 2001, May 01 - 'Found hinge nail' per Co Rec's Doc. #2001-0853.  
 2001, Oct. 31 - 'Found Hinge Nail' per Co Rec's Doc. #2003-1869.  
 2008, Oct. 16 - 'Fd. Hinge Nail' per Co Rec's Doc. #2009-0297.  
 Previous and current Co Engr's ties do not indicate type of monumentation with ties as shown above.

Corner Recovery =  
 Searched area with a metal detector, excavated 0.4' x 0.3' deep hole at magnetic reading. Found an Iron concrete nail, 0.2' deep, tied out and removed nail as this monument does not match record. Continued excavating to 0.5' deep and found a 1/2" iron pin, 0.4' deep in apparent centerline of traveled surface of ACC road North-South and in-line with fenceline remnants East. Location of monument found matches that of record and one remaining record tie is within reason. Therefore, used pin as the correct corner. All ties are plumb distance.  
 Note: Nail was S02°22'55"W, 0.09' from that of pin.

This certificate is being prepared because there are no longer three valid ties of record and there is a change to monumentation of record.

### SE Cor. SW¼ NE¼



Cor Q  
30-94-14

#### Monument Description, Remarks, and Plan View:

SE Cor. SW¼ NE¼ - History of Corner =  
 1999, May 21 - 'Set Mag-Nail W/Stainless Steel Washer' per Co Rec's Book 171 Page 456.  
 1999, May 21 - 'Set MAG nail w/stainless steel washer LS7060' per Co Rec's Book 171 Page 462.  
 2001, Oct. 18 - 'Set Mag-Nail W/Stainless Steel Washer LS 7060' per Co Rec's Doc. #2003-1869.  
 2008, Oct. 16 - 'Fd. Mag-Nail W/Stainless Steel Washer LS 7060' per Co. Rec's Doc. #2009-0297.  
 2008, Dec. 22 - Preliminary Plat of Smith's Country Acres Addition Indicates usage of corner, but not type of monumentation.  
 Previous Co Engr's ties indicate that corner was monumented with 'IRON PIN'.  
 Current Co Engr's ties indicate that corner is monumented with 'set Mag-Nail w/washer #7060'.

Corner Recovery =  
 Visually searched area and found a MAG nail with washer stamped 'LS 7060 L TEKIPPE' flush in apparent centerline of traveled surface of ACC road North-South and in-line with fenceline East. Location of monument found matches that of record, monument found matches that of record and record ties are within reason. Therefore, used nail as the correct corner. All ties are plumb distance.

This certificate is being prepared because there are no longer three valid ties of record.

#### Legend

- |                                      |  |                                    |
|--------------------------------------|--|------------------------------------|
| BC = Nail with Bottle Cap            | ID = Inside Diameter                   | R/W = Iron ROW Nail                |
| BP = Brace Post                      | OD = Outside Diameter                  | SFP = Steel 'T' Post               |
| CP = Corner Post                     | PP = Power Pole                        | SW = Nail with Square Metal Washer |
| CMP = Corrugated Metal Pipe          | PW = Nail with Plastic Washer          | TP = Telephone Pedestal            |
| CM = 4" Sq Concrete Monument with    | RCP = Reinforced Concrete Pipe         | TW = Nail with Round Metal Washer  |
| 1/2" iron rod in center (tie to rod) | RH = Red Head (Nail in wire)           | WFP = Wood Fence Post              |
| CX = Cut 'X'                         | ROW = Right of Way                     | X = X Nails                        |
| GP = Gate Post                       | RW = Nail with Reflective Round Washer |                                    |



UNITED STATES PUBLIC LAND SURVEY CORNER CERTIFICATE

OF

Land Survey Monuments situated in Section 30, Township 94 North, Range 14 West, of the Fifth Principal Meridian, CHICKASAW County, Iowa. Previously recorded in none in County Recorder's Office. (book, page, document number, etc.)

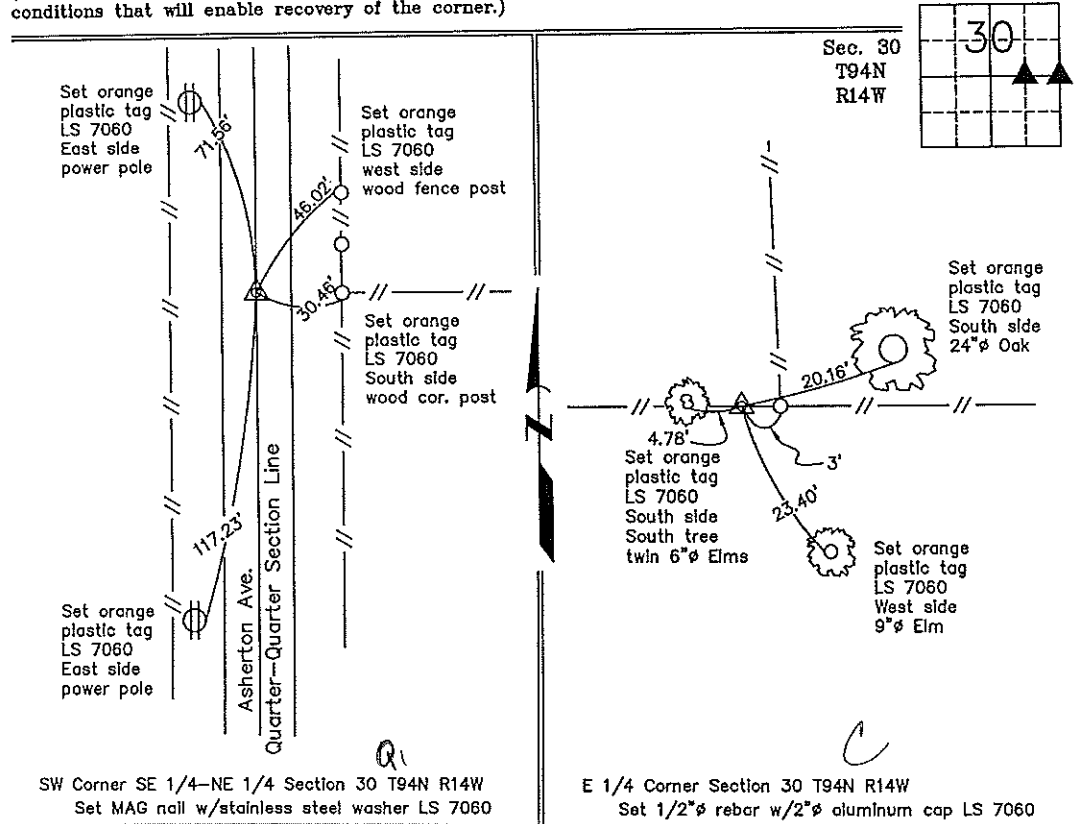
(Show reason for preparing this certificate, the evidence and detailed procedures used in establishing the corner positions and monumentation found or placed.)

Monument Description and Remarks: SW Corner SE 1/4-NE 1/4 Section 30 T94N R14W: Set MAG nail w/stainless steel washer LS 7060 at the intersection of the quarter-quarter section line and the extension of the quarter section line fence.

E 1/4 Corner Section 30 T94N R14W: Set 1/2" ø rebar w/2" ø aluminum cap LS 7060 by doubling the distance from the Center of the Section to and across the SW Corner SE 1/4-NE 1/4 of Section 30.

PLAN - VIEW

(Show a minimum of three reference ties to durable physical objects, relevant monuments and physical conditions that will enable recovery of the corner.)



SW Corner SE 1/4-NE 1/4 Section 30 T94N R14W  
Set MAG nail w/stainless steel washer LS 7060

E 1/4 Corner Section 30 T94N R14W  
Set 1/2" ø rebar w/2" ø aluminum cap LS 7060

I hereby certify that this land surveying document was prepared and the related survey work was performed by me or under my direct personal supervision and that I am a duly licensed Land Surveyor under the laws of the State of Iowa.



*Lyle G. TeKippe* 5-21-99  
Lyle G. TeKippe Date  
License number 7060  
My license renewal date is December 31, 2000.  
Sheets covered by this seal: Individual

List Corners to be Indexed			
Corners	Section	Twp.	Range
SW-SE-NE	30	94N	14W
Corner A	30	94-14	
E 1/4	30	94N	14W
Corner C	30	94-14	

171-462

Placed in Tax Book  
County Engineer's Copy 5/99