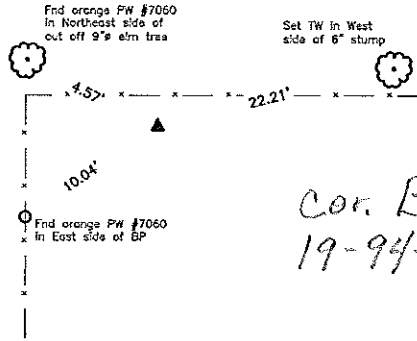


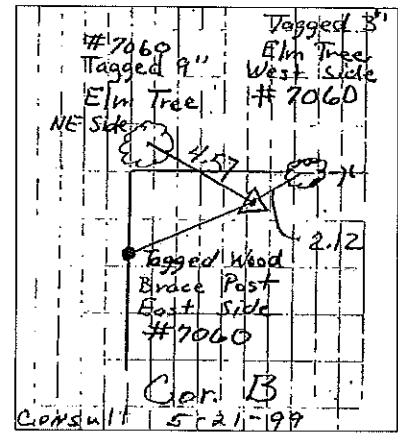
2009-1312
 Sec 19-94-14
 As ref to in
 Eng. Tie Book

NE Corner



Cor. B
 19-94-14

CO ENGR'S RECORD TIES



Monument Description, Remarks, and Plan View:

NE Corner - History of Corner =

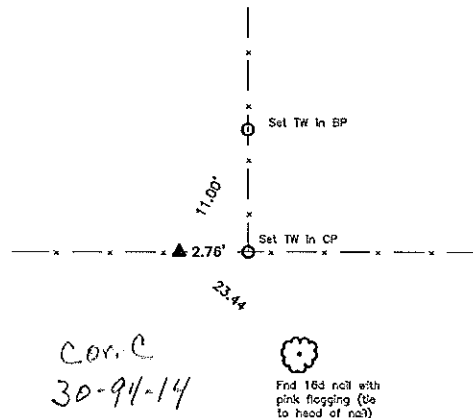
- 1997, Aug. 25 - 'Cor. Post' per Iowa DOT District 2 Office Field Book Page 6.
- 1999, May 21 - 'Set 1/2" Rebar w/2" Alum. Cap LS 7060' per Co Rec's Book 171 Page 456.
- 1999, May 21 - 'Set 1/2" rebar w/2" aluminum cap LS 7060' per Co Rec's Book 171 Page 460.
- 2000, Oct. 28 - 'Fd. 1/2" Rebar w/2" Alum. Cap LS 7060' per Co. Rec's Doc. #2000-1801.
- 2001, Oct. 18 - 'Set 1/2" Rebar w/2" Aluminum Cap LS 7060' per Co. Rec's Doc. #2003-1869.
- 2008, Oct. 16 - 'Fd. 1/2" Rebar w/2" Aluminum Cap LS 7060' per Co. Rec's Doc. #2009-0297.
- 2008, Dec. 22 - Preliminary Plat of Smith's Country Acres Addition indicates usage of corner, but not type of monumentation. Previous and current Co Engr's ties do not indicate type of monumentation with ties as shown above.

Corner Recovery =

Searched area with metal detector and found 1/2" iron rod with 2" aluminum capped stamped 'LS 7060 LYLE G TEKIPPE' flush. Location of monument found matches that of record, monument found matches that of record and record ties are within reason. Therefore, used rered as the correct corner. All ties are plumb distance.

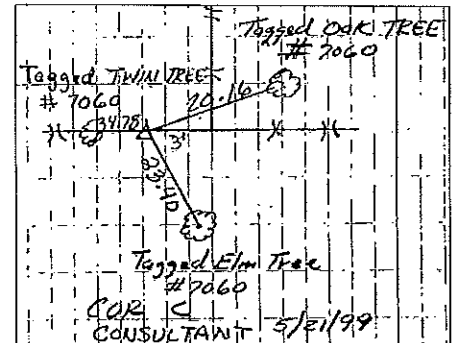
This certificate is being prepared because there are no longer three valid ties of record.

E 1/4 Corner



Cor. C
 30-94-14

CO ENGR'S RECORD TIES



Monument Description, Remarks, and Plan View:

E 1/4 Corner - History of Corner =

- 1997, Aug. 25 - 'Cor. Post' per Iowa DOT District 2 Office Field Book Page 6.
 - 1999, May 21 - 'Set 1/2" Rebar w/2" Alum. Cap LS 7060' per Co Rec's Book 171 Page 456.
 - 1999, May 21 - 'Set 1/2" rebar w/2" aluminum cap LS 7060' per Co Rec's Book 171 Page 462.
 - 2001, Oct. 18 - 'Set 1/2" Rebar w/2" Aluminum Cap LS 7060' per Co Rec's Doc. #2003-1869.
 - 2008, Oct. 16 - 'Fd. 1/2" Rebar w/2" Aluminum Cap LS 7060' per Co Rec's Doc. #2009-0297.
- Previous Co Engr's ties indicate that corner is monumented.
 Current Co Engr's ties indicate that corner is monumented with 'Set 1/2" IP with 2" Alum Cap LS 7060' with ties as shown above.

Corner Recovery =

Searched area with metal detector and found 1/2" iron rod with 2" aluminum cap stamped 'LS 7060 LYLE G TEKIPPE', 0.1' exposed in-line with fenceline East-West and 3'± West of fenceline North. Location of monument found matches that of record, monument found matches that of record and record ties are within reason. Therefore, used rered as the correct corner. All ties are plumb distance.

This certificate is being prepared because there are no longer three valid ties of record.

Legend

- | | | |
|--|--|------------------------------------|
| BC = Nail with Bottle Cap | ID = Inside Diameter | R/W = Iron ROW Nail |
| BP = Brace Post | OD = Outside Diameter | SFP = Steel 'T' Post |
| CP = Corner Post | PP = Power Pole | SW = Nail with Square Metal Washer |
| CMP = Corrugated Metal Pipe | PW = Nail with Plastic Washer | TP = Telephone Pedestal |
| CM = 4" Sq Concrete Monument with 1/2" Iron rod in center (tie to rered) | RCP = Reinforced Concrete Pipe | TW = Nail with Round Metal Washer |
| CX = Cut 'X' | RH = Red Head (Nail in wire) | WFP = Wood Fence Post |
| GP = Gate Post | ROW = Right of Way | X = X Nails |
| | RW = Nail with Reflective Round Washer | |

