

Chickasaw Co. Recorder
Cindy Messersmith
Fee Book 2016-1735

12/27/2016 @09:37AM
SCC SEC COR CERT # Pages: 1
Book: Page:
Total Fees: \$7.00

PREPARED BY: BRIAN J. DIEHL LS 13644 10 SUMAC MASON CITY, IOWA 50401 --- (641) 512-8004

SLSI 9-90

UNITED STATES PUBLIC LAND SURVEY CORNER CERTIFICATE

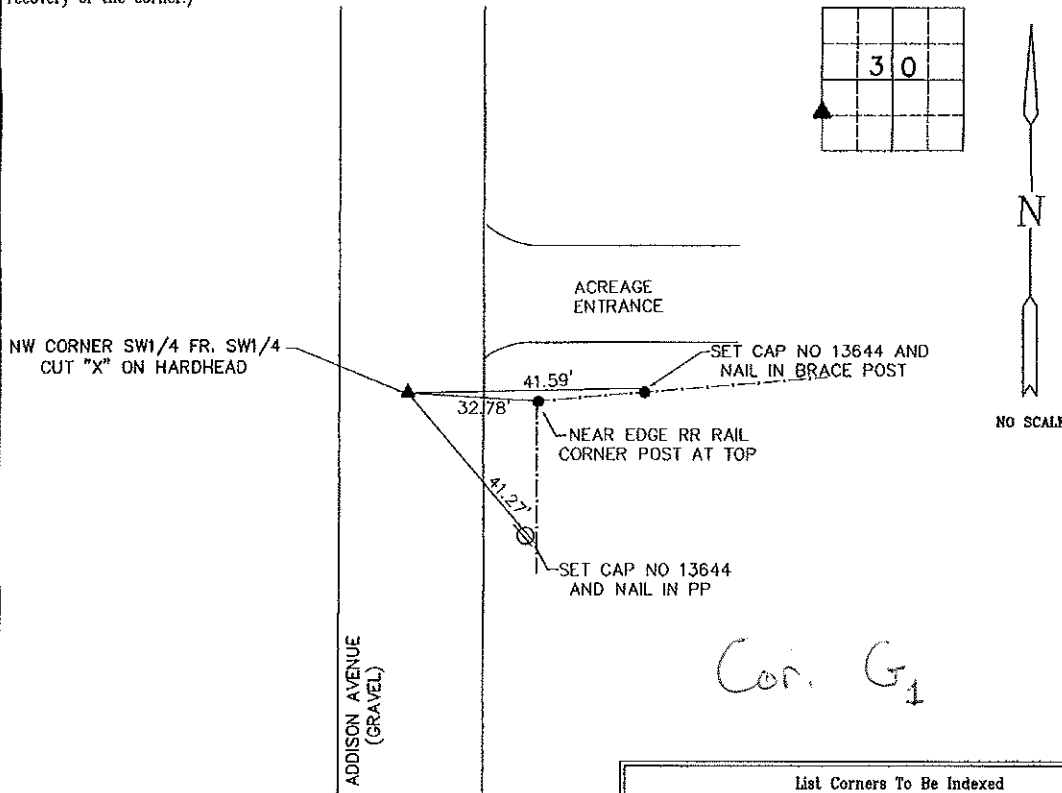
Land Survey Monuments Situated in Section 30, Township 94N, Range 14W, of the Fifth Principle Meridian, CHICKASAW County, Iowa
Previously Recorded in NO RECORD CERTIFICATE in County Recorder's Office
(book, page, document number, etc.)

(Show reason for preparing this certificate, the evidence and detailed procedures used in establishing the corner positions and monumentation found or placed.)

Monument Description and Remarks: NW CORNER SW1/4 FR. SW1/4 - SPLIT
DISTANCE FROM SW CORNER TO W1/4 CORNER. DUG 2.5' DIA HOLE 1.0'
DEEP. FOUND 9" X 6" HARDHEAD. CUT "X" IN HIGH POINT AND SET 5/8"
ROD WITH BLUE L.S. CAP NO 13644 0.40' NORTH OF "X" FOR LOCATION
PURPOSES, CALCULATED POSITION IS 0.45' NORTH AND 0.06' EAST. ROD IS
0.5' DEEP.

PLAN-VIEW

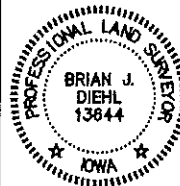
(Show a minimum of three reference ties to durable physical objects, relevant monuments and physical conditions that will enable recovery of the corner.)



Corners	List Corners To Be Indexed		
	Section	Twp	Range
NW CORNER SW1/4 FR. SW1/4	30	94	14



BRIAN J. DIEHL, P.L.S.
LAND SURVEYING SERVICES
10 SUMAC
MASON CITY, IA 50401
641-512-8004
brianjdiehlpls@gmail.com



I hereby certify that this land surveying document was prepared and the related survey work was performed by me or under my direct personal supervision and that I am a duly licensed Professional Land Surveyor under the laws of the State of Iowa.

[Signature]
Brian J. Diehl
Date: December 23, 2016
License number 13644.
My license renewal date is December 31, 2017
Sheets covered by this seal: 1