

Chickasaw Co. Recorder
 Cindy Messersmith
Fee Book 2016-1736
 12/27/2016 @0940AM
 SCC SEC COR CERT # Pages: 1
 Total Fees: \$7.00

PREPARED BY: BRIAN J. DIEHL LS 13844 10 SUMAC MASON CITY, IOWA 50401 -- (641) 512-8004

SLSI 9-00

UNITED STATES PUBLIC LAND SURVEY CORNER CERTIFICATE

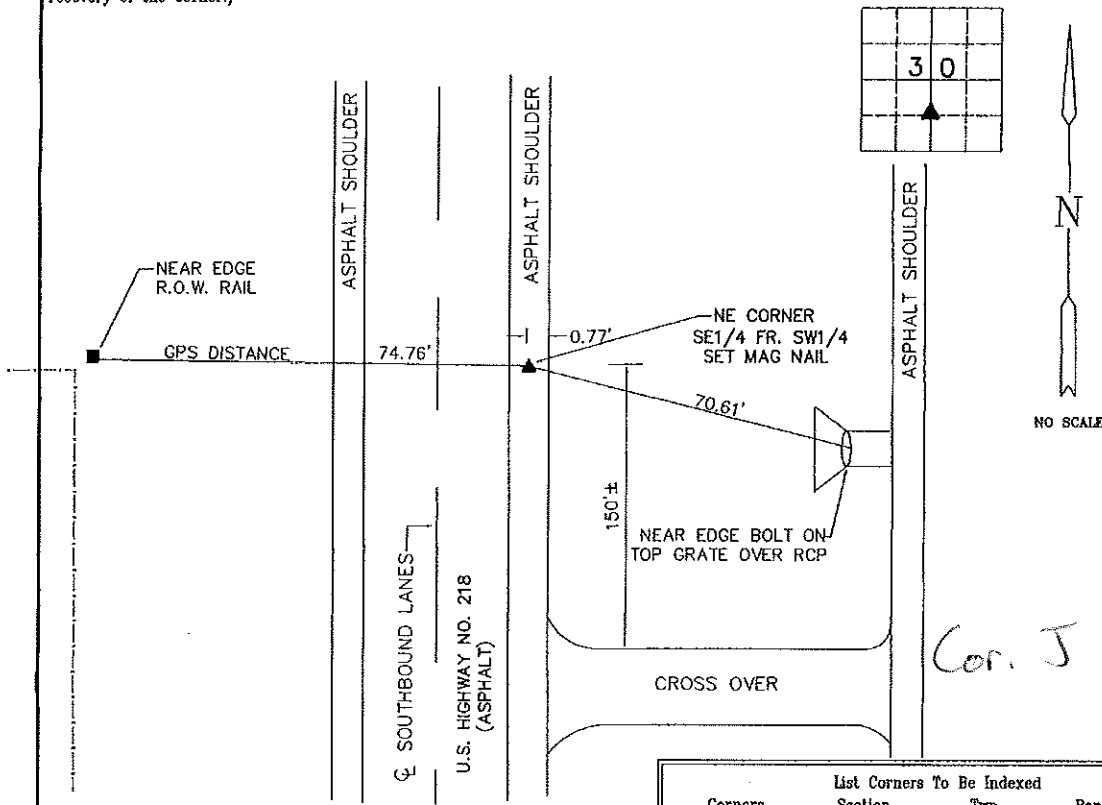
Land Survey Monuments Situated in Section 30, Township 94N, Range 14W, of the Fifth Principle Meridian, CHICKASAW County, Iowa
 Previously Recorded in NO RECORD CERTIFICATE in County Recorder's Office
(book, page, document number, etc.)

(Show reason for preparing this certificate, the evidence and detailed procedures used in establishing the corner positions and monumentation found or placed.)

Monument Description and Remarks: NE CORNER SE1/4 FR. SW1/4 - SET MAG NAIL ON LINE AND EQUI-DISTANT FROM CENTER SECTION TO S1/4 CORNER.

PLAN-VIEW

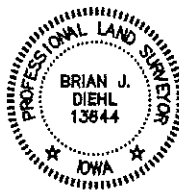
(Show a minimum of three reference ties to durable physical objects, relevant monuments and physical conditions that will enable recovery of the corner.)



List Corners To Be Indexed			
Corners	Section	Twp	Range
NE CORNER SE1/4 FR. SW1/4	30	94	14



BRIAN J. DIEHL, P.L.S.
 LAND SURVEYING SERVICES
 10 SUMAC
 MASON CITY, IA 50401
 641-512-8004
 brianjdiehlpls@gmail.com



I hereby certify that this land surveying document was prepared and the related survey work was performed by me or under my direct personal supervision and that I am a duly licensed Professional Land Surveyor under the laws of the State of Iowa.

Brian J. Diehl
 Brian J. Diehl
 License number 13844
 My license renewal date is December 31, 2017
 Sheets covered by this set: 1

Date: December 23, 2016