

Section 19-94-14
 As ref. to in
 Engr. Tic Book

TeKIPPE ENGINEERING, P.C., 128 South Vine Street, West Union, Iowa 52176 Phone (319) 422-6131

UNITED STATES PUBLIC LAND SURVEY CORNER CERTIFICATE

OF 19
 Land Survey Monuments situated in Section 30, Township 94 North, Range 14 West, of the Fifth Principal Meridian, CHICKASAW County, Iowa.
 Previously recorded in none in County Recorder's Office.
(book, page, document number, etc.)

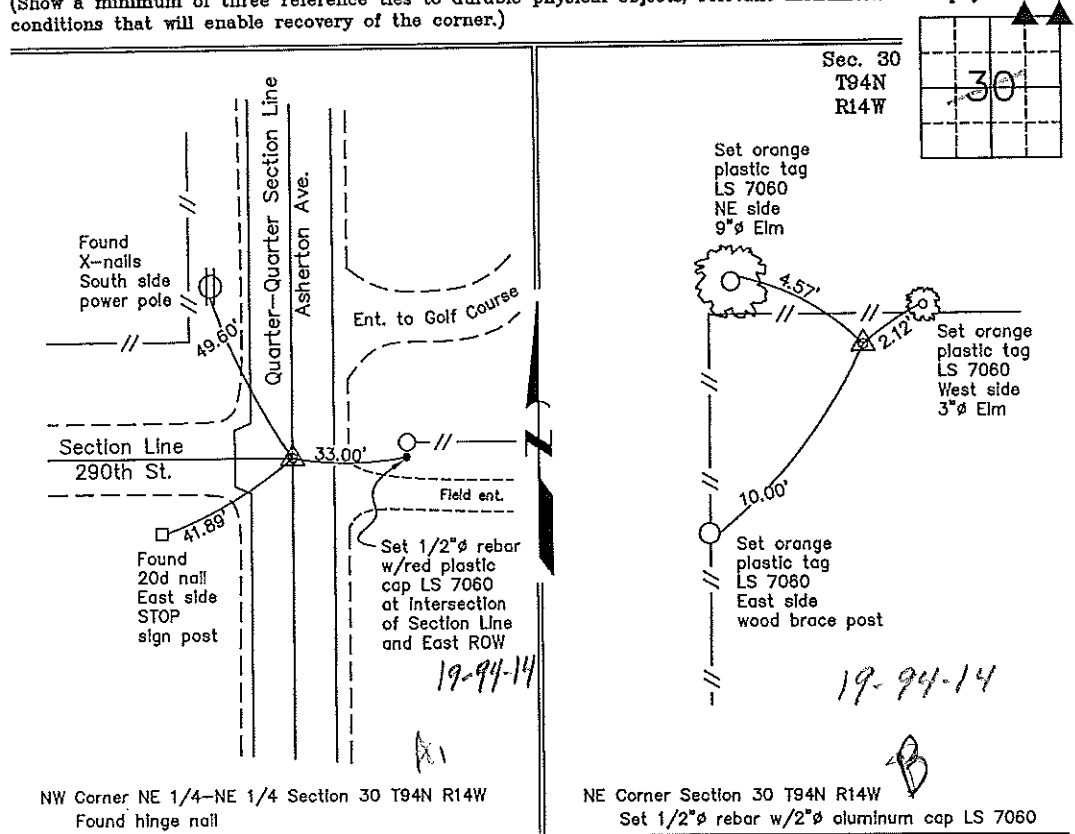
(Show reason for preparing this certificate, the evidence and detailed procedures used in establishing the corner positions and monumentation found or placed.)

Monument Description and Remarks: NW Corner NE 1/4-NE 1/4 Section 30 T94N R14W:
 Found a hinge nail at the intersection of the Section Line (290th St.) and the Quarter-Quarter Section Line (Asherton Ave.).

NE Corner Section 30 T94N R14W: Set 1/2" ϕ rebar w/2" ϕ aluminum cap LS 7060 by doubling the distance from the N 1/4 Corner to and across the NW Corner NE 1/4-NE 1/4 Section 30.

PLAN - VIEW

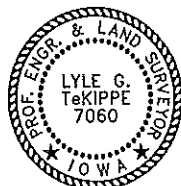
(Show a minimum of three reference ties to durable physical objects, relevant monuments and physical conditions that will enable recovery of the corner.)



NW Corner NE 1/4-NE 1/4 Section 30 T94N R14W
 Found hinge nail

NE Corner Section 30 T94N R14W
 Set 1/2" ϕ rebar w/2" ϕ aluminum cap LS 7060

I hereby certify that this land surveying document was prepared and the related survey work was performed by me or under my direct personal supervision and that I am a duly licensed Land Surveyor under the laws of the State of Iowa.



Lyle G. TeKippe 5-21-99
 Lyle G. TeKippe Date
 License number 7060
 My license renewal date is December 31, 2000.
 Sheets covered by this seal: Individual

List Corners to be Indexed			
Corners	Section	Twp.	Range
NW-NE-NE	30	94N	14W
Cor A, 19-94-14			
NE	30	94N	14W
Cor B 19-94-14 Placed in the books 5/99			