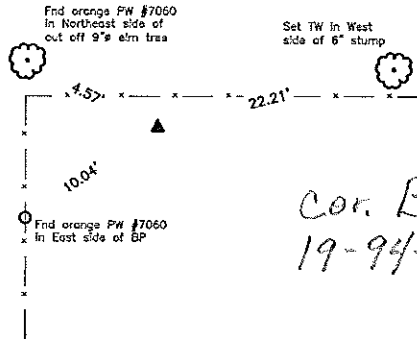


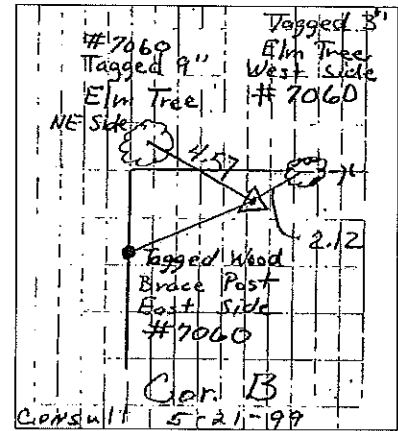
2009-1312
 Sec 19-94-14
 As ref to in
 Engr. Tie Book

NE Corner



Cor. B
 19-94-14

CO ENGR'S RECORD TIES



Monument Description, Remarks, and Plan View:

NE Corner - History of Corner =

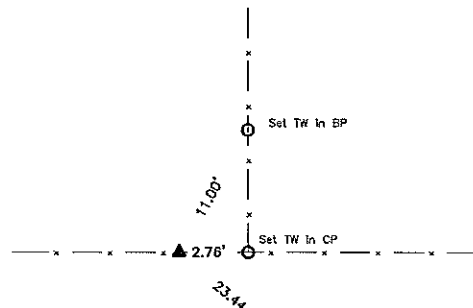
- 1997, Aug. 25 - 'Cor. Post' per Iowa DOT District 2 Office Field Book Page 6.
- 1999, May 21 - 'Set 1/2" Rebar w/2" Alum. Cap LS 7060' per Co Rec's Book 171 Page 456.
- 1999, May 21 - 'Set 1/2" rebar w/2" aluminum cap LS 7060' per Co Rec's Book 171 Page 460.
- 2000, Oct. 28 - 'Fd. 1/2" Rebar w/2" Alum. Cap LS 7060' per Co. Rec's Doc. #2000-1801.
- 2001, Oct. 18 - 'Set 1/2" Rebar w/2" Aluminum Cap LS 7060' per Co. Rec's Doc. #2003-1869.
- 2008, Oct. 16 - 'Fd. 1/2" Rebar w/2" Aluminum Cap LS 7060' per Co. Rec's Doc. #2009-0297.
- 2008, Dec. 22 - Preliminary Plat of Smith's Country Acres Addition indicates usage of corner, but not type of monumentation. Previous and current Co Engr's ties do not indicate type of monumentation with ties as shown above.

Corner Recovery =

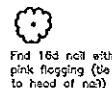
Searched area with metal detector and found 1/2" iron rerod with 2" aluminum capped stamped 'LS 7060 LYLE G TEKIPPE' flush. Location of monument found matches that of record, monument found matches that of record and record ties are within reason. Therefore, used rerod as the correct corner. All ties are plumb distance.

This certificate is being prepared because there are no longer three valid ties of record.

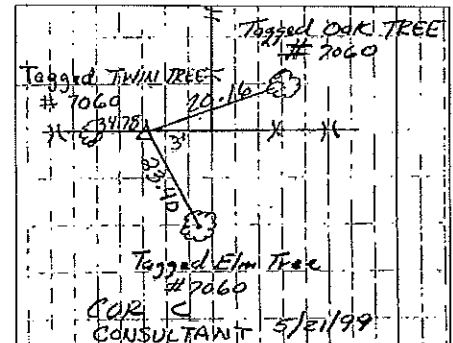
E 1/4 Corner



Cor. C
 30-94-14



CO ENGR'S RECORD TIES



Monument Description, Remarks, and Plan View:

E 1/4 Corner - History of Corner =

- 1997, Aug. 25 - 'Cor. Post' per Iowa DOT District 2 Office Field Book Page 6.
- 1999, May 21 - 'Set 1/2" Rebar w/2" Alum. Cap LS 7060' per Co Rec's Book 171 Page 456.
- 1999, May 21 - 'Set 1/2" rebar w/2" aluminum cap LS 7060' per Co Rec's Book 171 Page 462.
- 2001, Oct. 18 - 'Set 1/2" Rebar w/2" Aluminum Cap LS 7060' per Co Rec's Doc. #2003-1869.
- 2008, Oct. 16 - 'Fd. 1/2" Rebar w/2" Aluminum Cap LS 7060' per Co Rec's Doc. #2009-0297.
- Previous Co Engr's ties indicate that corner is monumented.
- Current Co Engr's ties indicate that corner is monumented with 'Set 1/2" IP with 2" Alum Cap LS 7060' with ties as shown above.

Corner Recovery =

Searched area with metal detector and found 1/2" iron rerod with 2" aluminum cap stamped 'LS 7060 LYLE G TEKIPPE', 0.1' exposed in-line with fenceline East-West and 3'± West of fenceline North. Location of monument found matches that of record, monument found matches that of record and record ties are within reason. Therefore, used rerod as the correct corner. All ties are plumb distance.

This certificate is being prepared because there are no longer three valid ties of record.

Legend

- | | | |
|--|--|------------------------------------|
| BC = Nail with Bottle Cap | ID = Inside Diameter | R/W = Iron ROW Nail |
| BP = Brace Post | OD = Outside Diameter | SFP = Steel 'T' Post |
| CP = Corner Post | PP = Power Pole | SW = Nail with Square Metal Washer |
| CMP = Corrugated Metal Pipe | PW = Nail with Plastic Washer | TP = Telephone Pedestal |
| CM = 4" Sq Concrete Monument with 1/2" iron rerod in center (tie to rerod) | RCP = Reinforced Concrete Pipe | TW = Nail with Round Metal Washer |
| CX = Cut 'X' | RH = Red Head (Nail in wire) | WFP = Wood Fence Post |
| GP = Gate Post | ROW = Right of Way | X = X Nails |
| | RW = Nail with Reflective Round Washer | |



Section 19-94-14
As ref. to in
Engr. TIC Book

TeKIPPE ENGINEERING, P.C., 128 South Vine Street, West Union, Iowa 52176 Phone (319) 422-5131

UNITED STATES PUBLIC LAND SURVEY CORNER CERTIFICATE

OF 19
Land Survey Monuments situated in Section 30, Township 94 North, Range 14 West, of the Fifth Principal Meridian, CHICKASAW County, Iowa.
Previously recorded in none in County Recorder's Office.
(book, page, document number, etc.)

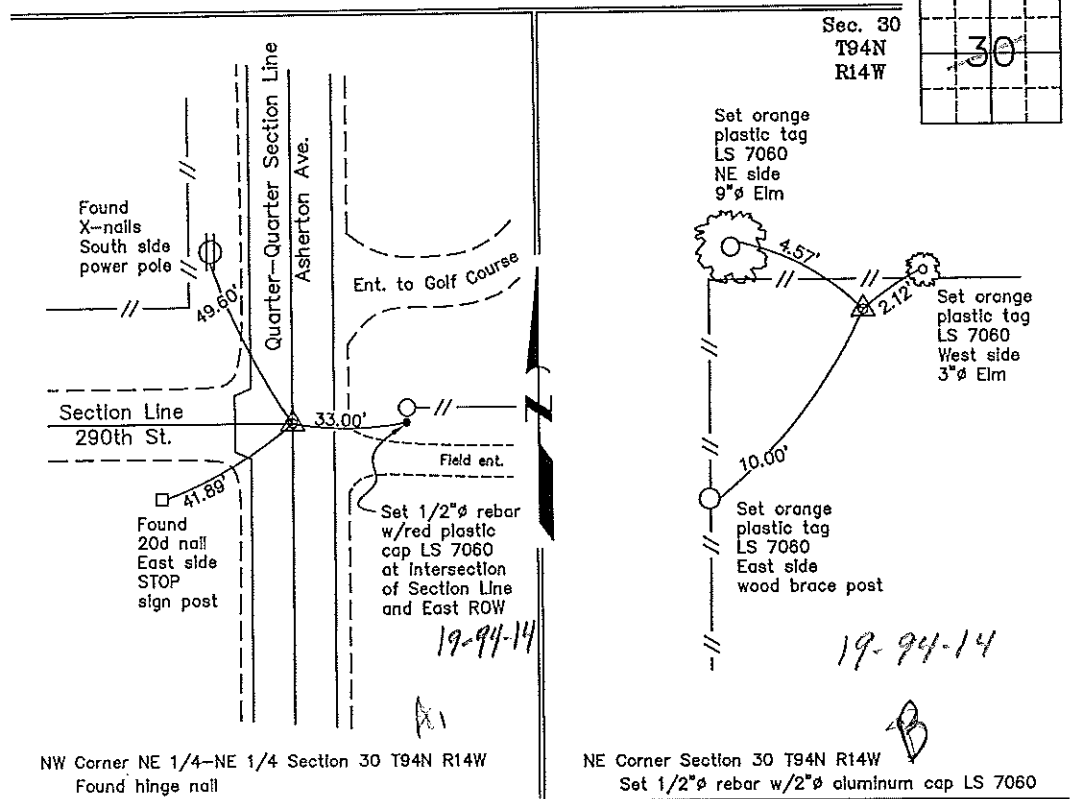
(Show reason for preparing this certificate, the evidence and detailed procedures used in establishing the corner positions and monumentation found or placed.)

Monument Description and Remarks: NW Corner NE 1/4-NE 1/4 Section 30 T94N R14W:
Found a hinge nail at the intersection of the Section Line (290th St.) and the Quarter-Quarter Section Line (Asherton Ave.).

NE Corner Section 30 T94N R14W: Set 1/2" ϕ rebar w/2" ϕ aluminum cap LS 7060 by doubling the distance from the N 1/4 Corner to and across the NW Corner NE 1/4-NE 1/4 Section 30.

PLAN - VIEW

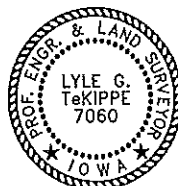
(Show a minimum of three reference ties to durable physical objects, relevant monuments and physical conditions that will enable recovery of the corner.)



NW Corner NE 1/4-NE 1/4 Section 30 T94N R14W
Found hinge nail

NE Corner Section 30 T94N R14W
Set 1/2" ϕ rebar w/2" ϕ aluminum cap LS 7060

I hereby certify that this land surveying document was prepared and the related survey work was performed by me or under my direct personal supervision and that I am a duly licensed Land Surveyor under the laws of the State of Iowa.



Lyle G. TeKippe 5-21-99
Lyle G. TeKippe Date
License number 7060
My license renewal date is December 31, 2000.
Sheets covered by this seal: Individual

| List Corners to be Indexed | | | |
|--|---------|------|-------|
| Corners | Section | Twp. | Range |
| NW-NE-NE | 30 | 94N | 14W |
| Cor A, 19-94-14 | | | |
| NE | 30 | 94N | 14W |
| Cor B 19-94-14 Placed in the books 5/99 | | | |